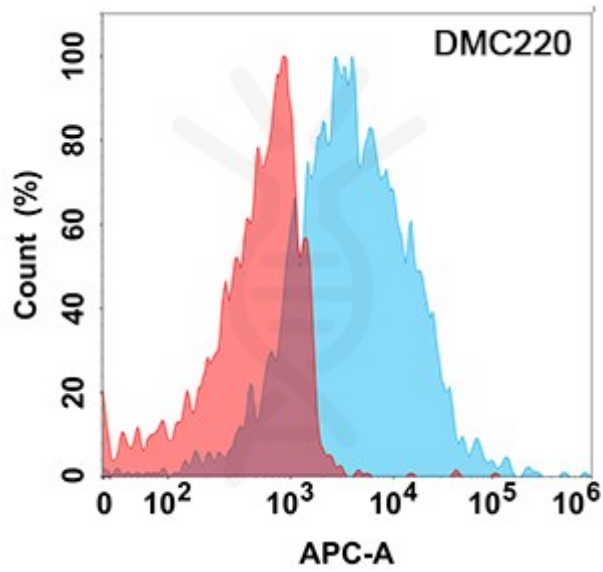


**PRODUCT INFORMATION**

<b>Clone ID</b>	DMC220
<b>Target</b>	FCRL5
<b>Synonyms</b>	BXMAS1; CD307; CD307e; FCRH5; IRTA2; PRO820
<b>Host Species</b>	Rabbit
<b>Description</b>	Anti-FCRL5 antibody(DMC220); IgG1 Chimeric mAb
<b>Delivery</b>	In Stock
<b>Uniprot ID</b>	Q96RD9
<b>IgG type</b>	Rabbit/Human Fc chimeric IgG1
<b>Clonality</b>	Monoclonal
<b>Reactivity</b>	Human
<b>Applications</b>	ELISA; Flow Cyt
<b>Recommended Dilutions</b>	ELISA 1:5000-10000; Flow Cyt 1:100
<b>Purification</b>	Purified from cell culture supernatant by affinity chromatography
<b>Formulation &amp; Reconstitution</b>	Lyophilized from sterile PBS, pH 7.4. Normally 5 % - 8% trehalose is added as protectants before lyophilization. Please see Certificate of Analysis for specific instructions of reconstitution.
<b>Storage &amp; Shipping</b>	Store at -20°C to -80°C for 12 months in lyophilized form. After reconstitution, if not intended for use within a month, aliquot and store at -80°C (Avoid repeated freezing and thawing). Lyophilized proteins are shipped at ambient temperature.
<b>Background</b>	This gene encodes a member of the immunoglobulin receptor superfamily and the Fc-receptor like family. This gene and several other Fc receptor-like gene members are clustered on the long arm of chromosome 1. The encoded protein is a single-pass type I membrane protein and contains 8 immunoglobulin-like C2-type domains. This gene is implicated in B cell development and lymphomagenesis. Alternatively spliced transcript variants encoding different isoforms have been identified.
<b>Usage</b>	Research use only





**Figure 1.** Flow cytometry analysis with Anti-FCRL5 (DMC220) on Expi293 cells transfected with human FCRL5 (Blue histogram) or Expi293 transfected with irrelevant protein (Red histogram).

DIMABIO CONFIDENTIAL

