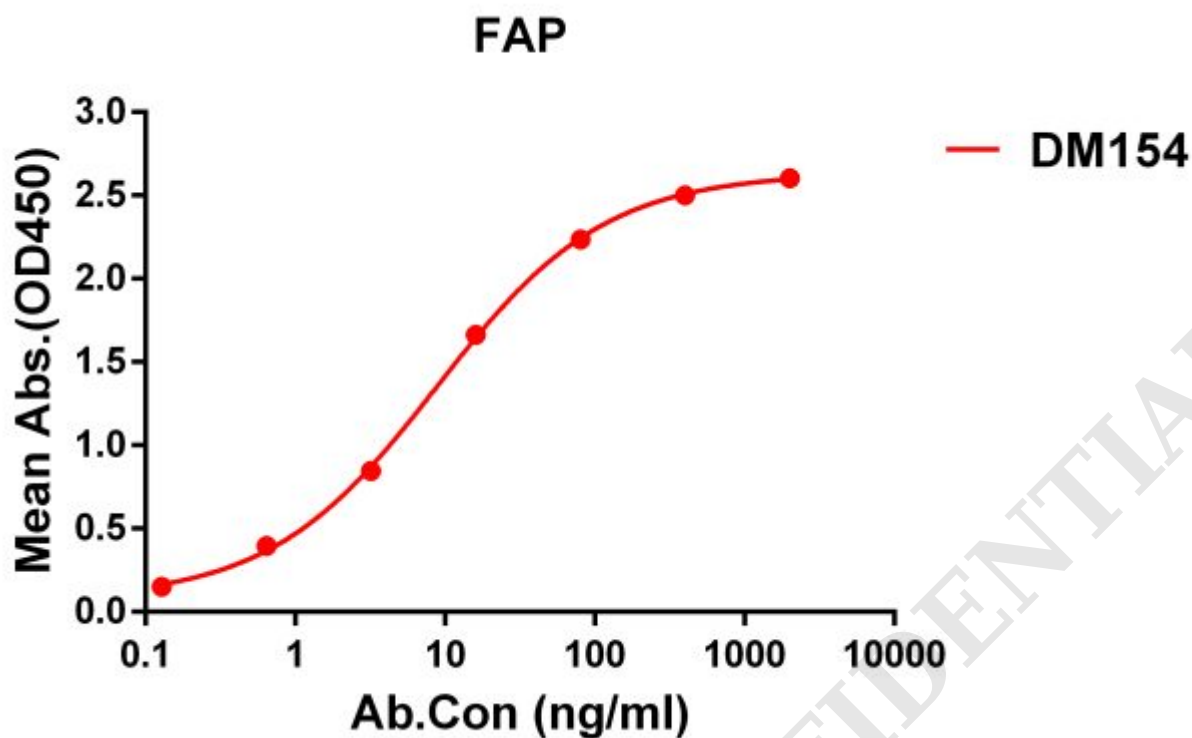


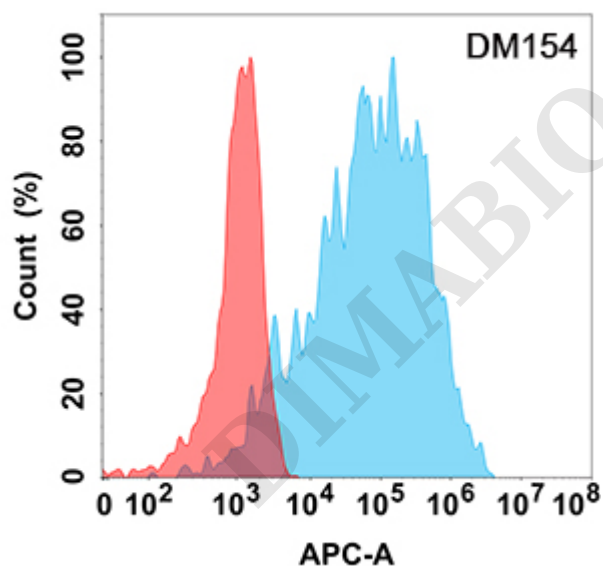
**PRODUCT INFORMATION**

<b>Clone ID</b>	DM154
<b>Target</b>	FAP
<b>Synonyms</b>	FAP;FAPalpha;SIMP;Seprase;APCE
<b>Host Species</b>	Rabbit
<b>Description</b>	Anti-FAP antibody(DM154); Rabbit mAb
<b>Delivery</b>	In Stock
<b>Uniprot ID</b>	Q12884
<b>IgG type</b>	Rabbit IgG
<b>Clonality</b>	Monoclonal
<b>Reactivity</b>	Human
<b>Applications</b>	ELISA; Flow Cyt
<b>Recommended Dilutions</b>	ELISA 1:5000-10000; Flow Cyt 1:100
<b>Purification</b>	Purified from cell culture supernatant by affinity chromatography
<b>Formulation &amp; Reconstitution</b>	Lyophilized from sterile PBS, pH 7.4. Normally 5 % - 8% trehalose is added as protectants before lyophilization. Please see Certificate of Analysis for specific instructions of reconstitution.
<b>Storage &amp; Shipping</b>	Store at -20°C to -80°C for 12 months in lyophilized form. After reconstitution, if not intended for use within a month, aliquot and store at -80°C (Avoid repeated freezing and thawing). Lyophilized proteins are shipped at ambient temperature.
<b>Background</b>	The protein encoded by this gene is a homodimeric integral membrane gelatinase belonging to the serine protease family. It is selectively expressed in reactive stromal fibroblasts of epithelial cancers; granulation tissue of healing wounds; and malignant cells of bone and soft tissue sarcomas. This protein is thought to be involved in the control of fibroblast growth or epithelial-mesenchymal interactions during development; tissue repair; and epithelial carcinogenesis. Alternatively spliced transcript variants encoding different isoforms have been found for this gene.
<b>Usage</b>	Research use only





**Figure 1.** ELISA plate pre-coated by 1  $\mu\text{g/ml}$  (100  $\mu\text{l/well}$ ) Human FAP protein, His tagged protein (Igetskuurl sku="PME100626") can bind Rabbit anti-FAP monoclonal antibody(**clone: DM154**) in a linear range of 1-500 ng/ml.



**Figure 2.** Flow cytometry analysis with Anti-FAP (DM154) on Expi293 cells transfected with human FAP (Blue histogram) or Expi293 transfected with irrelevant protein (Red histogram).

