

PRODUCT INFORMATION

Clone ID	DM95
Target	DNAM1
Synonyms	DNAM1; CD226; PTA1
Host Species	Rabbit
Description	Anti-DNAM-1 antibody(DM95); Rabbit mAb
Delivery	In Stock
Uniprot ID	Q15762
IgG type	Rabbit IgG
Clonality	Monoclonal
Reactivity	Human
Applications	ELISA; Flow Cyt
Recommended Dilutions	ELISA 1:5000-10000; Flow Cyt 1:100
Purification	Purified from cell culture supernatant by affinity chromatography
Formulation & Reconstitution	Lyophilized from sterile PBS, pH 7.4. Normally 5% - 8% trehalose is added as protectants before lyophilization. Please see Certificate of Analysis for specific instructions of reconstitution.
Storage & Shipping	Store at -20°C to -80°C for 12 months in lyophilized form. After reconstitution, if not intended for use within a month, aliquot and store at -80°C (Avoid repeated freezing and thawing). Lyophilized proteins are shipped at ambient temperature.
Background	This gene encodes a glycoprotein expressed on the surface of NK cells; platelets; monocytes and a subset of T cells. It is a member of the Ig-superfamily containing 2 Ig-like domains of the V-set. The protein mediates cellular adhesion of platelets and megakaryocytic cells to vascular endothelial cells. The protein also plays a role in megakaryocytic cell maturation. Alternative splicing results in multiple transcript variants.
Usage	Research use only
Conjugate	Unconjugated



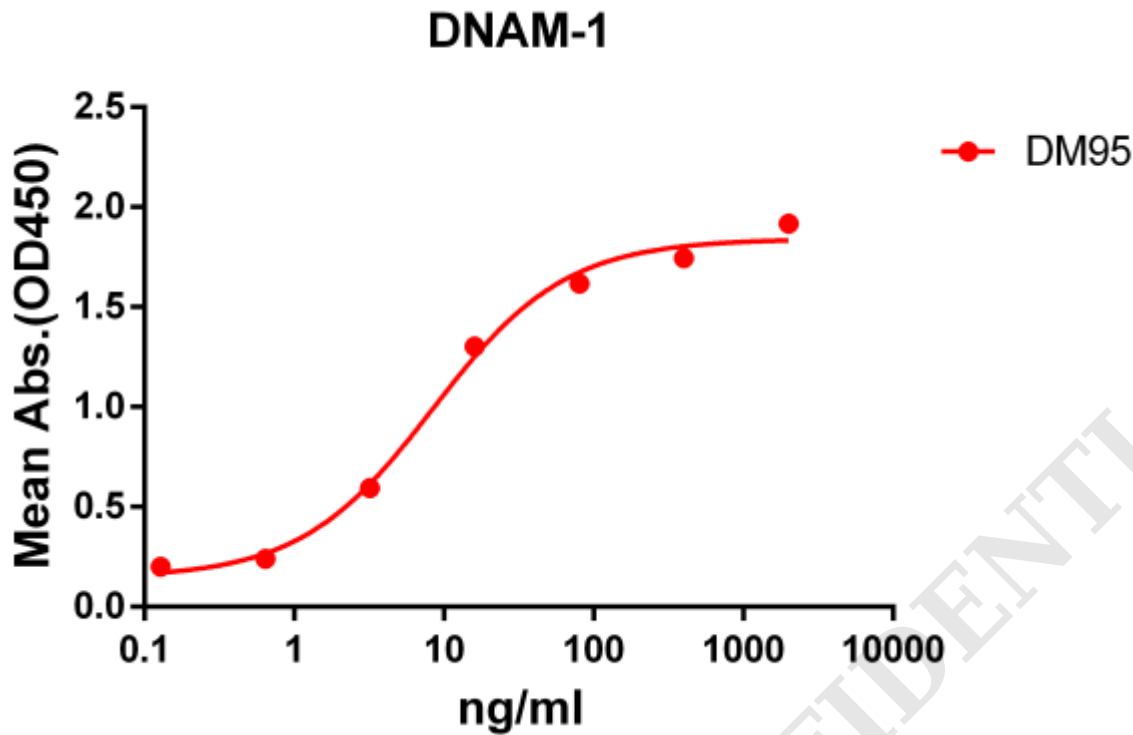


Figure 1. ELISA plate pre-coated by 2 $\mu\text{g/ml}$ (100 $\mu\text{l/well}$) Human DNAM-1 protein, mFc-His tagged protein ([getskuurl sku="PME100050"]) can bind Rabbit anti-DNAM-1 monoclonal antibody (**clone: DM95**) in a linear range of 0.64-80 ng/ml.

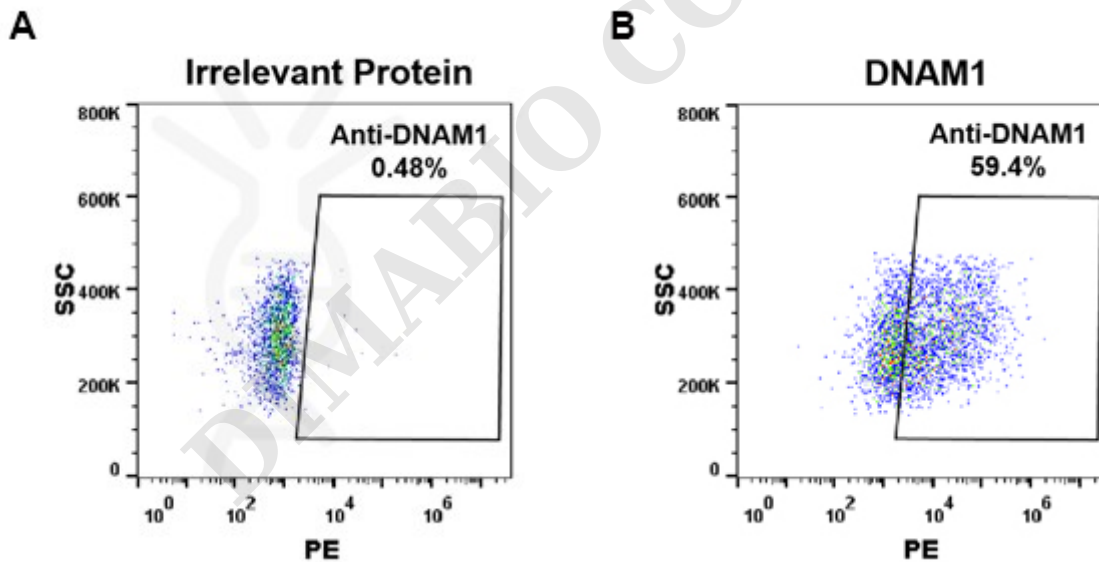


Figure 2. Expi 293 cell line transfected with irrelevant protein (**A**) and human DNAM-1 (**B**) were surface stained with Rabbit anti-DNAM-1 monoclonal antibody 1 $\mu\text{g/ml}$ (**clone: DM95**) followed by PE-conjugated anti-rabbit IgG secondary antibody.

