

PRODUCT INFORMATION

Clone ID	14E3
Target	DM1
Synonyms	N/A
Host Species	Rabbit
Description	Anti-DM1 antibody(14E3); Rabbit mAb
Delivery	In Stock
Uniprot ID	N/A
IgG type	Rabbit IgG
Clonality	Monoclonal
Reactivity	N/A
Applications	ELISA
Recommended Dilutions	ELISA 1/5000-10000
Purification	Purified from cell culture supernatant by affinity chromatography
Formulation & Reconstitution	Lyophilized from sterile PBS, pH 7.4. Normally 5% - 8% trehalose is added as protectants before lyophilization. Please see Certificate of Analysis for specific instructions of reconstitution.
Storage & Shipping	Store at -20°C to -80°C for 12 months in lyophilized form. After reconstitution, if not intended for use within a month, aliquot and store at -80°C (Avoid repeated freezing and thawing). Lyophilized proteins are shipped at ambient temperature.
Background	N/A
Usage	Research use only



ELISA assay to evaluate Anti-DM1 Antibody 0.2 μ g BSA-DM1 per well

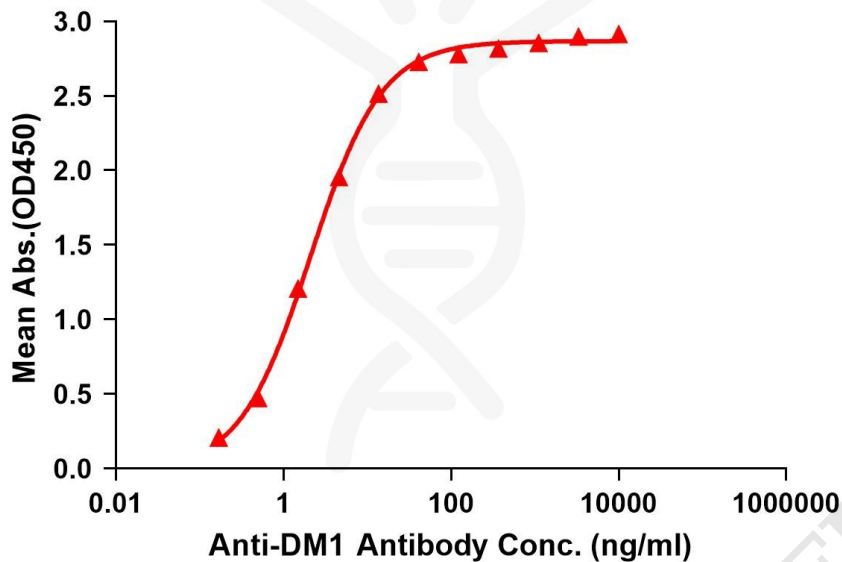


Figure 1. Elisa plates were pre-coated with BSA-DM1 (0.2 μ g/per well). Serial diluted anti-DM1 monoclonal antibody (DME101062) solutions were added, washed, and incubated with secondary antibody before Elisa reading. From above data, the EC50 for anti-DM1 monoclonal antibody binding with BSA-DM1 is 2.110ng/ml.

