

PRODUCT INFORMATION

Clone ID	3C1
Target	CXCL5
Synonyms	ENA-78;SCYB5
Host Species	Rabbit
Description	Anti-CXCL5 antibody(3C1), Rabbit mAb
Delivery	In Stock
Uniprot ID	P42830
IgG type	Rabbit mAb
Clonality	Monoclonal
Reactivity	Human
Applications	ELISA
Recommended Dilutions	ELISA 1/5000-10000
Purification	Purified from cell culture supernatant by affinity chromatography
Formulation & Reconstitution	Lyophilized from sterile PBS, pH 7.4. Normally 5 % - 8% trehalose is added as protectants before lyophilization. Please see Certificate of Analysis for specific instructions of reconstitution.
Storage & Shipping	Store at -20°C to -80°C for 12 months in lyophilized form. After reconstitution, if not intended for use within a month, aliquot and store at -80°C (Avoid repeated freezing and thawing). Lyophilized proteins are shipped at ambient temperature.
Background	This gene encodes a protein that is a member of the CXC subfamily of chemokines. Chemokines, which recruit and activate leukocytes, are classified by function (inflammatory or homeostatic) or by structure. This protein is proposed to bind the G-protein coupled receptor chemokine (C-X-C motif) receptor 2 to recruit neutrophils, to promote angiogenesis and to remodel connective tissues. This protein is thought to play a role in cancer cell proliferation, migration, and invasion. [provided by RefSeq, May 2013]
Usage	Research use only
Conjugate	Unconjugated



Anti-CXCL5 (3C1) mAb ELISA

0.1µg of Human CXCL5, hFc tagged protein per well

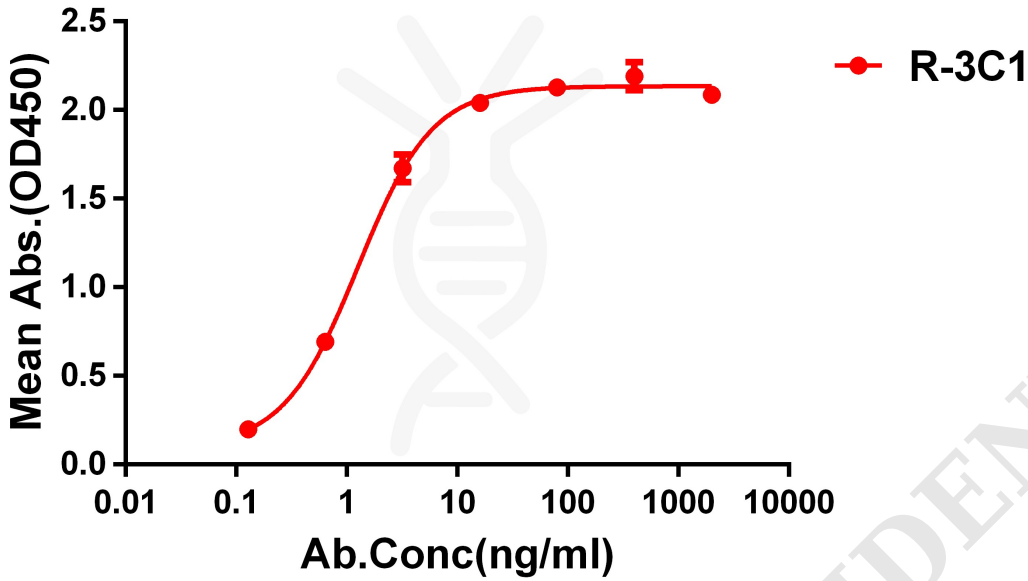


Figure 1. ELISA plate pre-coated by 1 µg/ml (100 µl/well) Human CXCL5 Protein can bind Rabbit anti-CXCL5 monoclonal antibody(clone: 3C1) in a linear range of 1-10 ng/ml.

