

PRODUCT INFORMATION

Clone ID	DM50
Target	CTLA-4
Synonyms	CTLA4; CD152
Host Species	Rabbit
Description	Anti-CTLA-4 antibody(DM50); Rabbit mAb
Delivery	In Stock
Uniprot ID	P16410
IgG type	Rabbit IgG
Clonality	Monoclonal
Reactivity	Human
Applications	ELISA; Flow Cyt
Recommended Dilutions	ELISA 1:5000-10000; Flow Cyt 1:100
Purification	Purified from cell culture supernatant by affinity chromatography
Formulation & Reconstitution	Lyophilized from sterile PBS, pH 7.4. Normally 5 % - 8% trehalose is added as protectants before lyophilization. Please see Certificate of Analysis for specific instructions of reconstitution.
Storage & Shipping	Store at -20°C to -80°C for 12 months in lyophilized form. After reconstitution, if not intended for use within a month, aliquot and store at -80°C (Avoid repeated freezing and thawing). Lyophilized proteins are shipped at ambient temperature.
Background	This gene is a member of the immunoglobulin superfamily and encodes a protein which transmits an inhibitory signal to T cells. The protein contains a V domain; a transmembrane domain; and a cytoplasmic tail. Alternate transcriptional splice variants; encoding different isoforms; have been characterized. The membrane-bound isoform functions as a homodimer interconnected by a disulfide bond; while the soluble isoform functions as a monomer. Mutations in this gene have been associated with insulin-dependent diabetes mellitus; Graves disease; Hashimoto thyroiditis; celiac disease; systemic lupus erythematosus; thyroid-associated orbitopathy; and other autoimmune diseases.
Usage	Research use only
Conjugate	Unconjugated



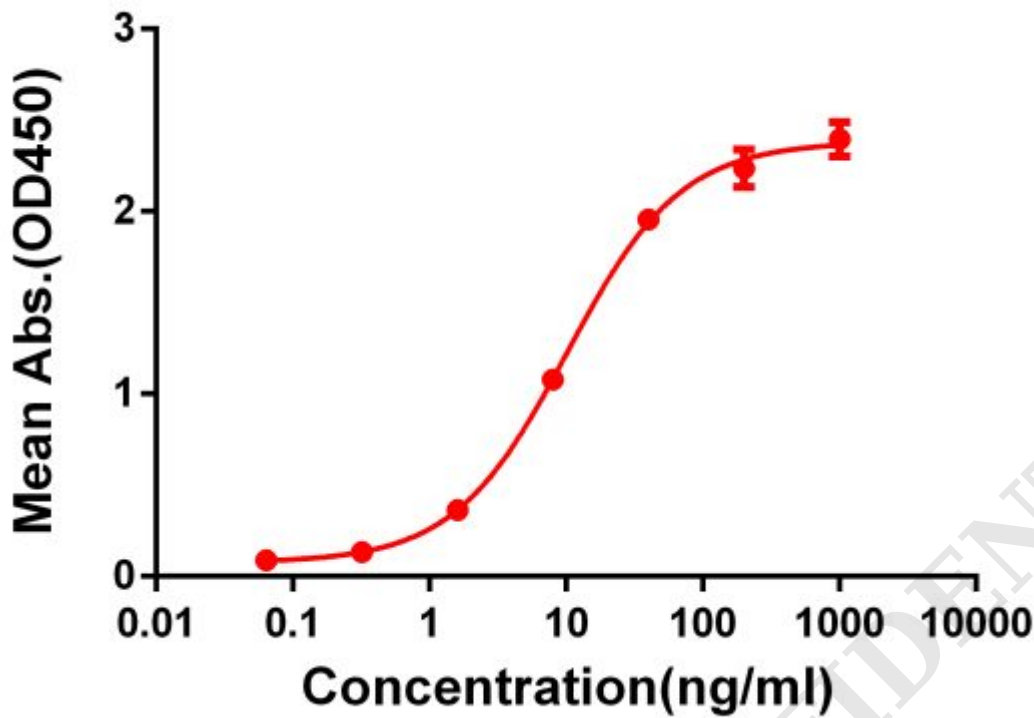


Figure 1. ELISA plate pre-coated by 2 $\mu\text{g/ml}$ (100 $\mu\text{l/well}$) Human CTLA4 protein, mFc-His tagged protein ([getskuurl sku="PME100017"]) can bind Rabbit anti-CTLA4 monoclonal antibody (**clone: DM50**) in a linear range of 1-100 ng/ml.

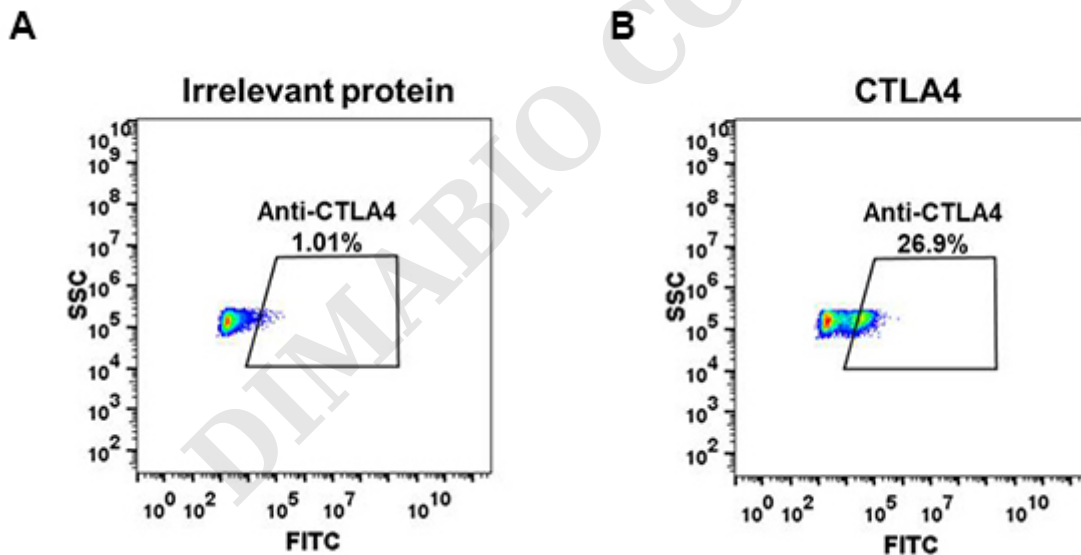


Figure 2. Expi 293 cell line transfected with irrelevant protein (**A**) and human CTLA4 (**B**) were surface stained with Rabbit anti-CTLA4 monoclonal antibody 1 $\mu\text{g/ml}$ (**clone: DM50**) followed by Alexa 488-conjugated anti-rabbit IgG secondary antibody.



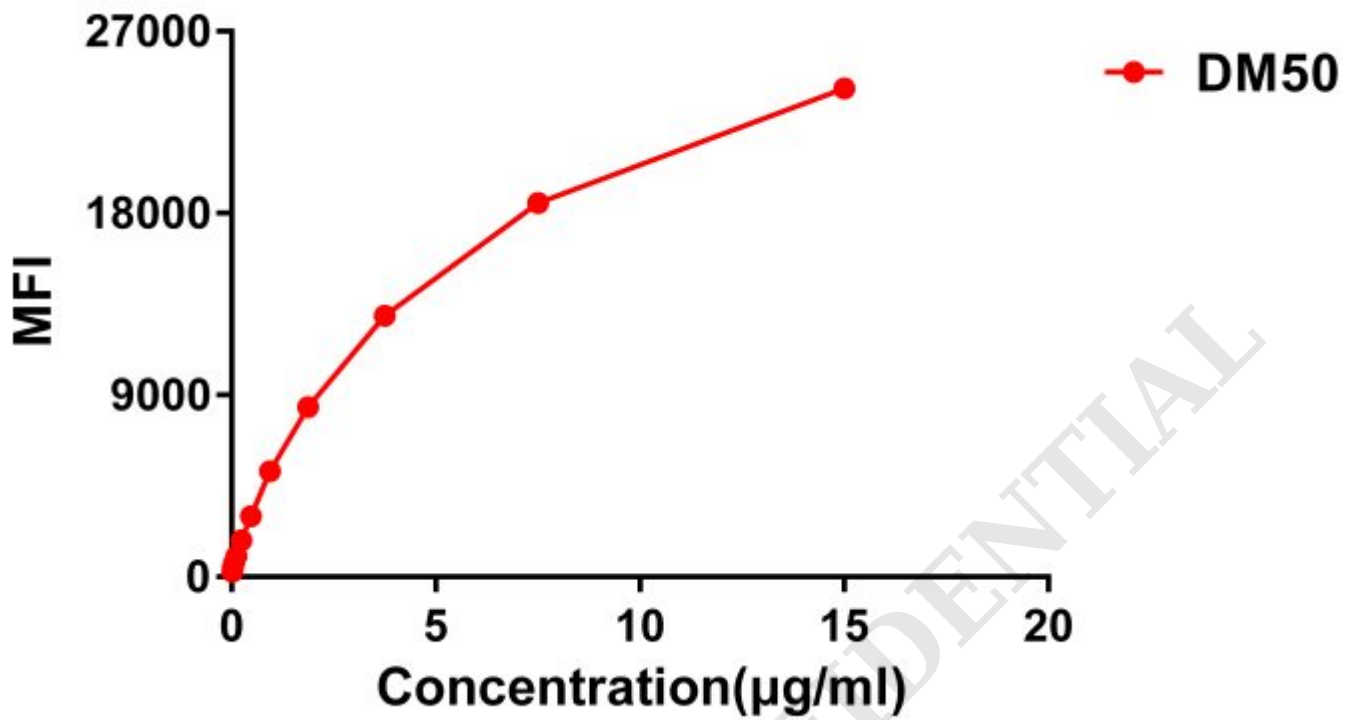


Figure 3. Flow cytometry data of serially titrated Rabbit anti-CTLA4 monoclonal antibody (clone: DM50) on Raji cells. The Y-axis represents the mean fluorescence intensity (MFI) while the X-axis represents the concentration of IgG used.



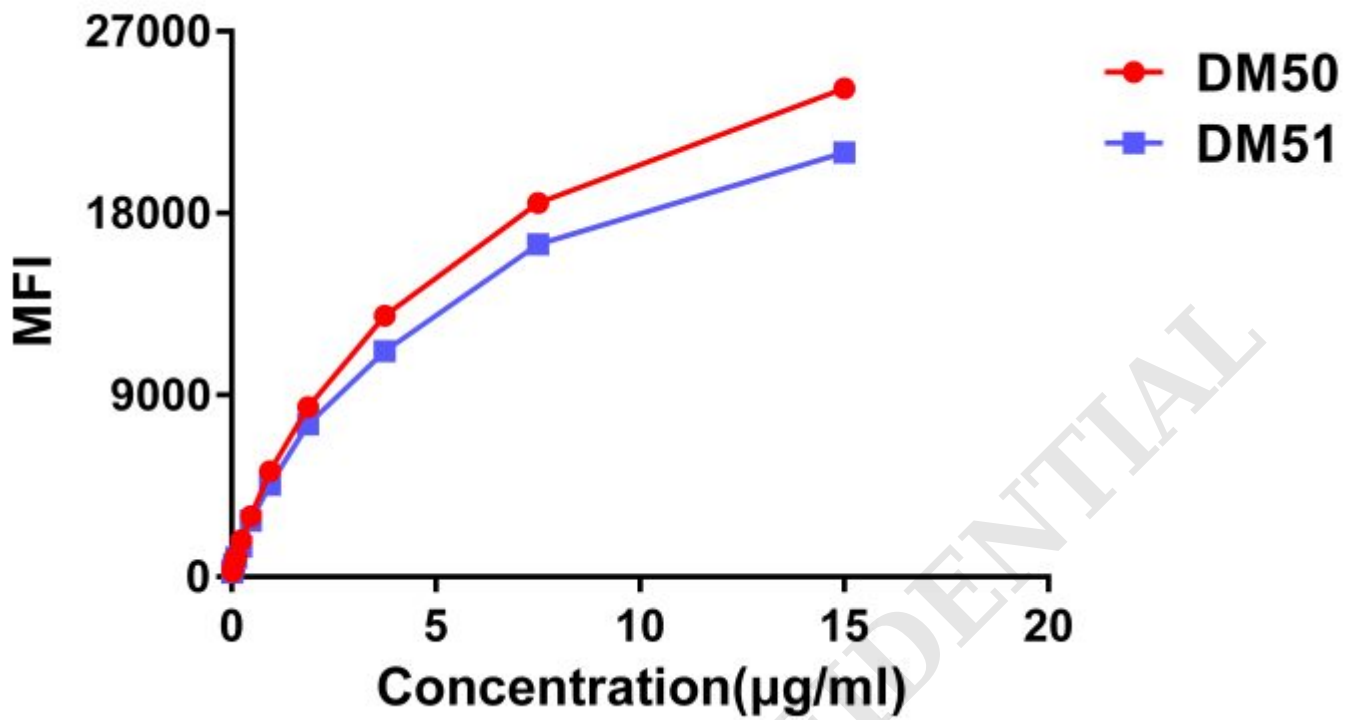


Figure 4. Affinity ranking of different Rabbit anti-CTLA4 mAb clones by titration of different concentration onto Raji cells. The Y-axis represents the mean fluorescence intensity (MFI) while the X-axis represents the concentration of IgG used.

DIMABIO CONFIDENTIAL

