

PRODUCT INFORMATION

Clone ID	DM107
Target	CSF1R
Synonyms	CSF1R;C-FMS;CD115;CSFR;FIM2;FMS;M-CSFR
Host Species	Rabbit
Description	Anti-CSF1R antibody(DM107); Rabbit mAb
Delivery	In Stock
Uniprot ID	P07333
IgG type	Rabbit IgG
Clonality	Monoclonal
Reactivity	Human
Applications	ELISA; Flow Cyt
Recommended Dilutions	ELISA 1:5000-10000; Flow Cyt 1:100
Purification	Purified from cell culture supernatant by affinity chromatography
Formulation & Reconstitution	Lyophilized from sterile PBS, pH 7.4. Normally 5 % - 8% trehalose is added as protectants before lyophilization. Please see Certificate of Analysis for specific instructions of reconstitution. Store at -20°C to -80°C for 12 months in lyophilized form. After reconstitution, if not intended for use within a month, aliquot and store at -80°C (Avoid repeated freezing and thawing). Lyophilized proteins are shipped at ambient temperature.
Storage & Shipping	
Background	The protein encoded by this gene is the receptor for colony stimulating factor 1; a cytokine which controls the production; differentiation; and function of macrophages. This receptor mediates most if not all of the biological effects of this cytokine. Ligand binding activates the receptor kinase through a process of oligomerization and transphosphorylation. The encoded protein is a tyrosine kinase transmembrane receptor and member of the CSF1:PDGF receptor family of tyrosine-protein kinases. Mutations in this gene have been associated with a predisposition to myeloid malignancy. The first intron of this gene contains a transcriptionally inactive ribosomal protein L7 processed pseudogene oriented in the opposite direction. Alternative splicing results in multiple transcript variants. Expression of a splice variant from an LTR promoter has been found in Hodgkin lymphoma (HL); HL cell lines and anaplastic large cell lymphoma.
Usage	Research use only
Conjugate	Unconjugated



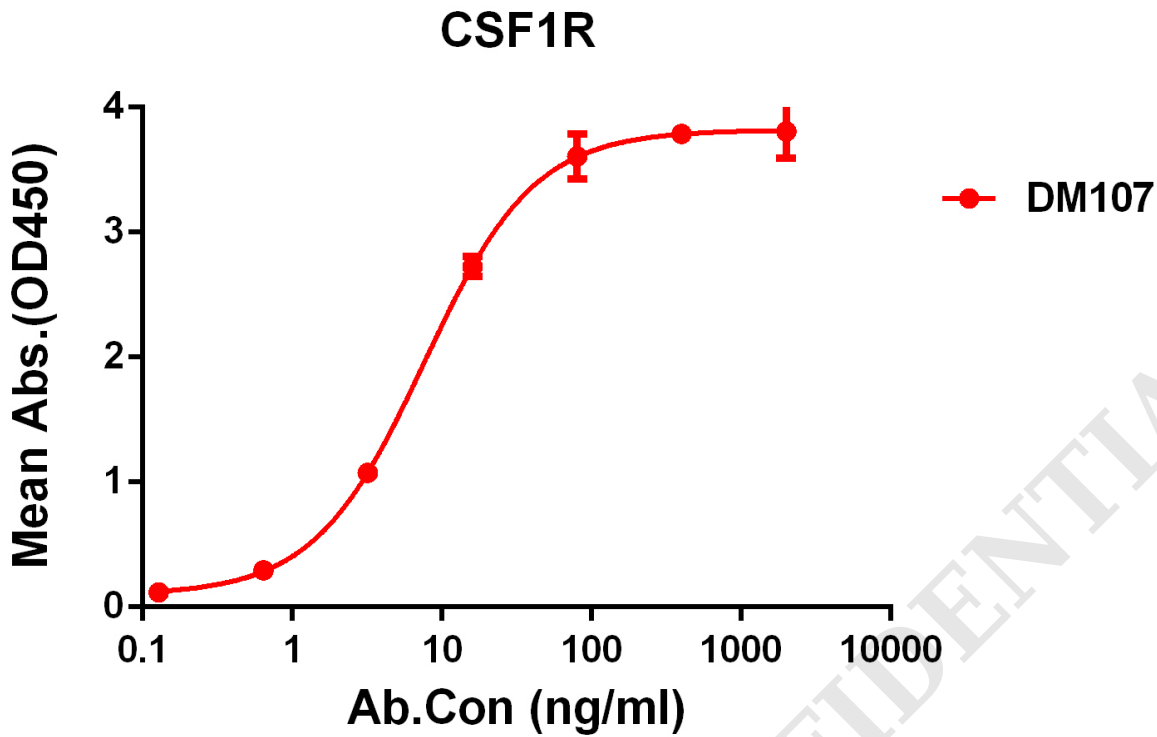


Figure 1. ELISA plate pre-coated by 2 µg/ml (100 µl/well) Human CSF1R protein,His tagged protein PME100067 can bind Rabbit anti- CSF1R monoclonal antibody (clone: DM107) in a linear range of 0.6-40 ng/ml.

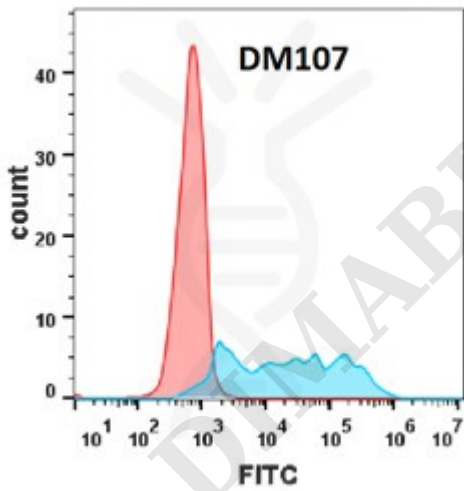


Figure 2. Flow cytometry analysis with Anti-CSF1R (DM107) on Expi293 cells transfected with human CSF1R(Blue histogram)or Expi293 transfected with irrelevant protein(Red histogram).



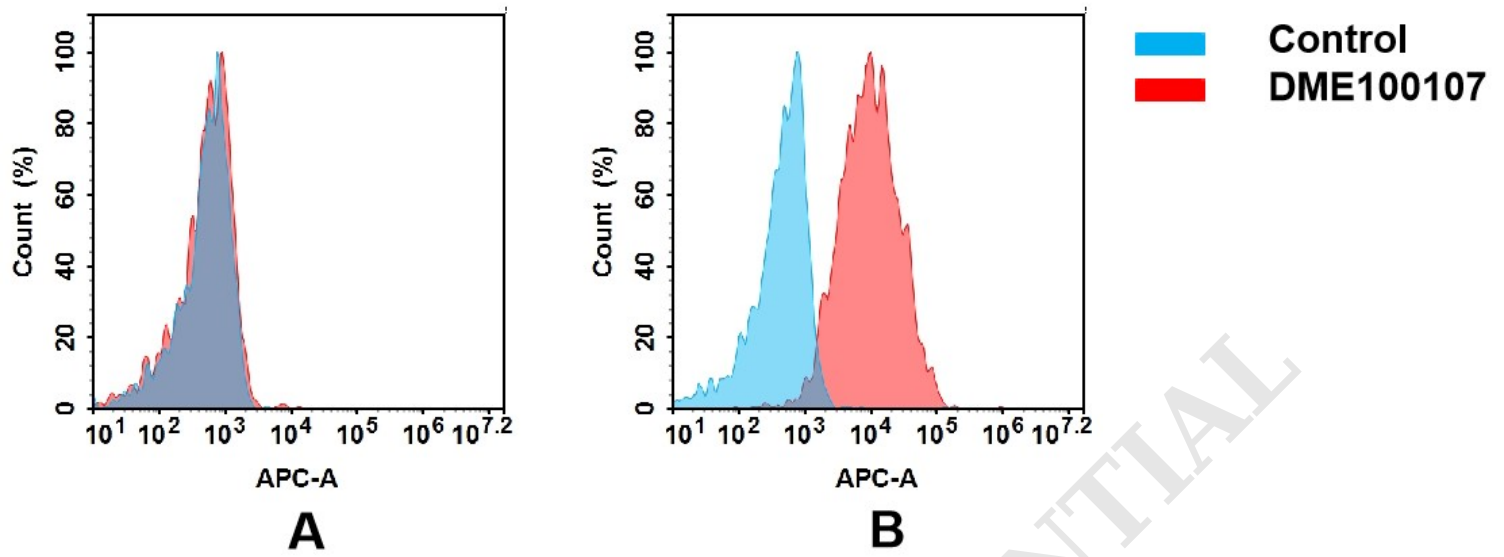


Figure 3. Flow cytometry analysis of antigen binding of rabbit anti-human CSF1R mAb(DME100107).

(A) DME100107 does not bind to CHO-S cells that do not express CSF1R.

(B) A clear peak shift of DME100107 was seen compared to the control when incubated with CSF1R-expressing THP-1 cells, indicating strong binding of DME100107 to CSF1R. Antibodies were incubated at 5 μ g/mL.

DIMABIO CONFIDENTIAL

