

**PRODUCT INFORMATION**

<b>Clone ID</b>	DMC461
<b>Target</b>	CLU
<b>Synonyms</b>	AAG4; APOJ; CLI; KUB1; MGC24903; SGP-2; SGP2; SP-40; TRPM-2; TRPM2
<b>Host Species</b>	Rabbit
<b>Description</b>	Anti-CLU antibody(DMC461); IgG1 Chimeric mAb
<b>Delivery</b>	In Stock
<b>Uniprot ID</b>	P10909
<b>IgG type</b>	Rabbit/Human Fc chimeric IgG1
<b>Clonality</b>	Monoclonal
<b>Reactivity</b>	Human
<b>Applications</b>	Flow Cyt
<b>Recommended Dilutions</b>	Flow Cyt 1:100
<b>Purification</b>	Purified from cell culture supernatant by affinity chromatography
<b>Formulation &amp; Reconstitution</b>	Lyophilized from sterile PBS, pH 7.4. Normally 5 % - 8% trehalose is added as protectants before lyophilization. Please see Certificate of Analysis for specific instructions of reconstitution.
<b>Storage &amp; Shipping</b>	Store at -20°C to -80°C for 12 months in lyophilized form. After reconstitution, if not intended for use within a month, aliquot and store at -80°C (Avoid repeated freezing and thawing). Lyophilized proteins are shipped at ambient temperature.
<b>Background</b>	The protein encoded by this gene is a secreted chaperone that can under some stress conditions also be found in the cell cytosol. It has been suggested to be involved in several basic biological events such as cell death; tumor progression; and neurodegenerative disorders. Alternate splicing results in both coding and non-coding variants.[provided by RefSeq; May 2011]
<b>Usage</b>	Research use only



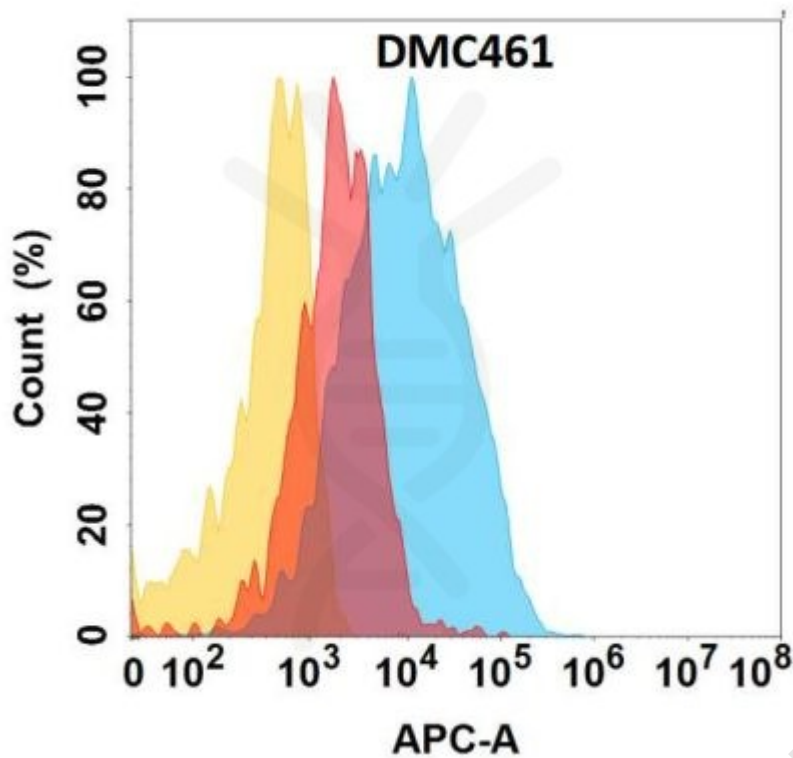


Figure 1. CLU protein is highly expressed on the surface of Expi293 cell membrane. Flow cytometry analysis with Anti-CLU (DMC461) on Expi293 cells transfected with human CLU (Blue histogram) or Expi293 transfected with irrelevant protein (Red histogram), and Isotype antibody on Expi293 transfected with irrelevant protein (Orange histogram).

