

**PRODUCT INFORMATION**

<b>Clone ID</b>	DMC469
<b>Target</b>	CLEC9A
<b>Synonyms</b>	CD370; DNGR-1; DNGR1; UNQ9341
<b>Host Species</b>	Rabbit
<b>Description</b>	Anti-CLEC9A antibody(DMC469); IgG1 Chimeric mAb
<b>Delivery</b>	In Stock
<b>Uniprot ID</b>	Q6UXN8
<b>IgG type</b>	Rabbit/Human Fc chimeric IgG1
<b>Clonality</b>	Monoclonal
<b>Reactivity</b>	Human
<b>Applications</b>	Flow Cyt
<b>Recommended Dilutions</b>	Flow Cyt 1:100
<b>Purification</b>	Purified from cell culture supernatant by affinity chromatography
<b>Formulation &amp; Reconstitution</b>	Lyophilized from sterile PBS, pH 7.4. Normally 5% - 8% trehalose is added as protectants before lyophilization. Please see Certificate of Analysis for specific instructions of reconstitution.
<b>Storage &amp; Shipping</b>	Store at -20°C to -80°C for 12 months in lyophilized form. After reconstitution, if not intended for use within a month, aliquot and store at -80°C (Avoid repeated freezing and thawing). Lyophilized proteins are shipped at ambient temperature.
<b>Background</b>	CLEC9A is a group V C-type lectin-like receptor (CLR) that functions as an activation receptor and is expressed on myeloid lineage cells (Huysamen et al.; 2008 [PubMed 18408006]).[supplied by OMIM; Aug 2008]
<b>Usage</b>	Research use only
<b>Conjugate</b>	Unconjugated



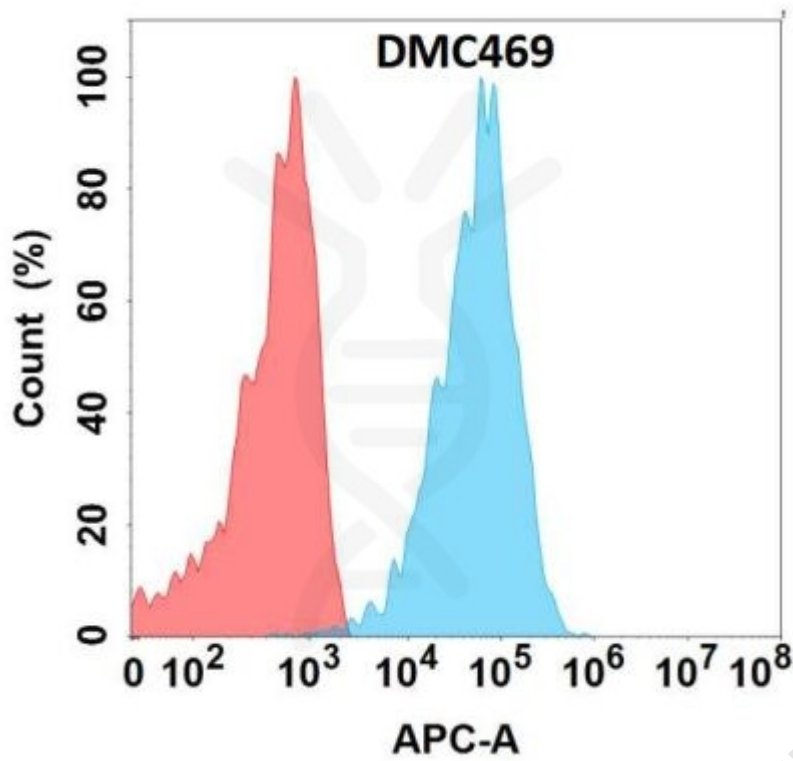


Figure 1. Flow cytometry analysis with Anti-CLEC9A (DMC469) on Expi293 cells transfected with human CLEC9A (Blue histogram) or Expi293 transfected with irrelevant protein (Red histogram).

