

PRODUCT INFORMATION

Clone ID	DMC468
Target	CLEC1A
Synonyms	CLEC-1; CLEC1
Host Species	Rabbit
Description	Anti-CLEC1A antibody(DMC468); IgG1 Chimeric mAb
Delivery	In Stock
Uniprot ID	Q8NC01
IgG type	Rabbit/Human Fc chimeric IgG1
Clonality	Monoclonal
Reactivity	Human
Applications	Flow Cyt
Recommended Dilutions	Flow Cyt 1:100
Purification	Purified from cell culture supernatant by affinity chromatography
Formulation & Reconstitution	Lyophilized from sterile PBS, pH 7.4. Normally 5 % - 8% trehalose is added as protectants before lyophilization. Please see Certificate of Analysis for specific instructions of reconstitution.
Storage & Shipping	Store at -20°C to -80°C for 12 months in lyophilized form. After reconstitution, if not intended for use within a month, aliquot and store at -80°C (Avoid repeated freezing and thawing). Lyophilized proteins are shipped at ambient temperature.
Background	This gene encodes a member of the C-type lectin:C-type lectin-like domain (CTL:CTLD) superfamily. Members of this family share a common protein fold and have diverse functions; such as cell adhesion; cell-cell signaling; glycoprotein turnover; and roles in inflammation and immune response. The encoded protein may play a role in regulating dendritic cell function. This gene is closely linked to other CTL:CTLD superfamily members on chromosome 12p13 in the natural killer gene complex region. Alternative splicing results in multiple transcript variants. [provided by RefSeq; Jul 2014]
Usage	Research use only
Conjugate	Unconjugated



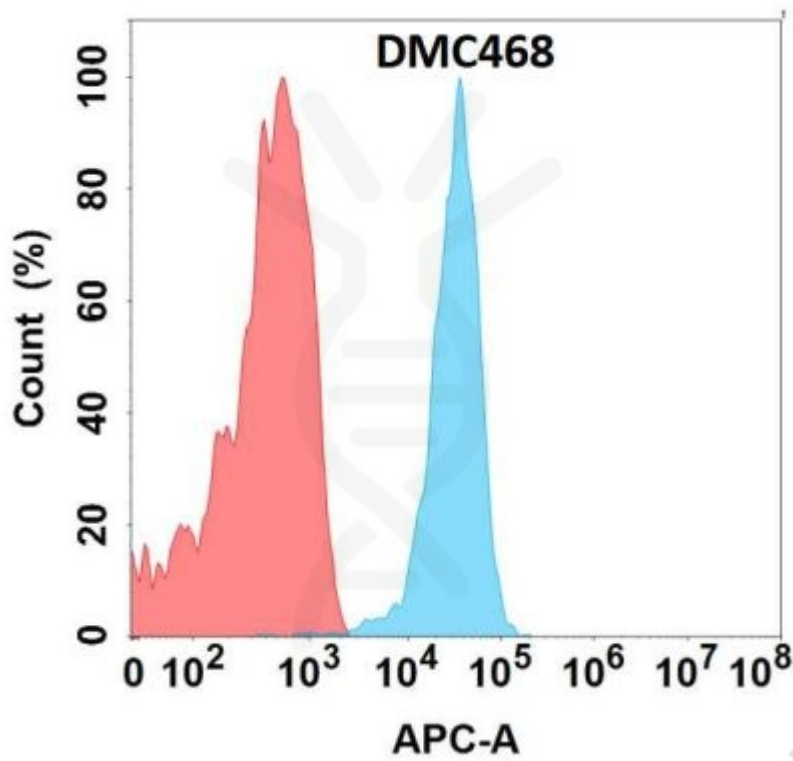


Figure 1. Flow cytometry analysis with Anti-CLEC1A (DMC468) on Expi293 cells transfected with human CLEC1A (Blue histogram) or Expi293 transfected with irrelevant protein (Red histogram).

