

PRODUCT INFORMATION

Clone ID	DM165
Target	CLEC12A
Synonyms	CLEC12A;MICL;CLL-1;CLL1;DCAL2;DCAL-2;CD371
Host Species	Rabbit
Description	Anti-CLEC12A antibody(DM165); Rabbit mAb
Delivery	In Stock
Uniprot ID	Q5QGZ9
IgG type	Rabbit IgG
Clonality	Monoclonal
Reactivity	Human
Applications	ELISA; Flow Cyt
Recommended Dilutions	ELISA 1:5000-10000; Flow Cyt 1:100
Purification	Purified from cell culture supernatant by affinity chromatography
Formulation & Reconstitution	Lyophilized from sterile PBS, pH 7.4. Normally 5 % - 8% trehalose is added as protectants before lyophilization. Please see Certificate of Analysis for specific instructions of reconstitution.
Storage & Shipping	Store at -20°C to -80°C for 12 months in lyophilized form. After reconstitution, if not intended for use within a month, aliquot and store at -80°C (Avoid repeated freezing and thawing). Lyophilized proteins are shipped at ambient temperature.
Background	This gene encodes a member of the C-type lectin:C-type lectin-like domain (CTL:CTLD) superfamily. Members of this family share a common protein fold and have diverse functions; such as cell adhesion; cell-cell signaling; glycoprotein turnover; and roles in inflammation and immune response. The protein encoded by this gene is a negative regulator of granulocyte and monocyte function. Several alternatively spliced transcript variants of this gene have been described; but the full-length nature of some of these variants has not been determined. This gene is closely linked to other CTL:CTLD superfamily members in the natural killer gene complex region on chromosome 12p13.
Usage	Research use only
Conjugate	Unconjugated



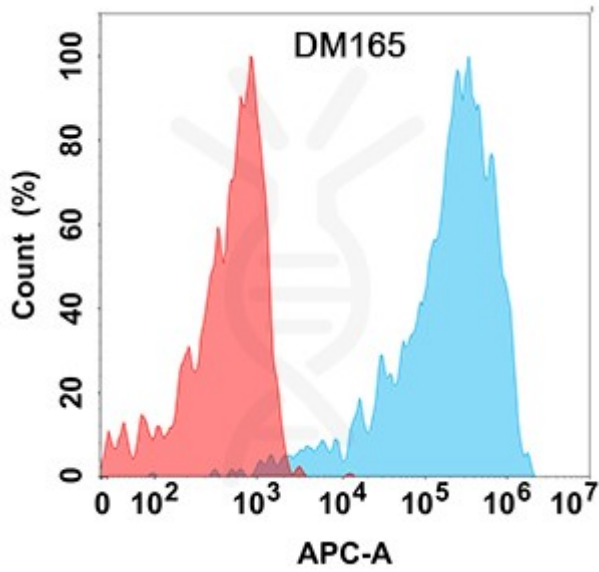


Figure 1. Flow cytometry analysis with Anti-CLEC12A (DM165) on Expi293 cells transfected with human CLEC12A (Blue histogram) or Expi293 transfected with irrelevant protein (Red histogram).

DIMABIO CONFIDENTIAL

