

**PRODUCT INFORMATION**

<b>Clone ID</b>	DMC484
<b>Target</b>	CDH1
<b>Synonyms</b>	Arc-1; BCDS1; CD324; CDHE; ECAD; LCAM; UVO
<b>Host Species</b>	Rabbit
<b>Description</b>	Anti-CDH1 antibody(DMC484); IgG1 Chimeric mAb
<b>Delivery</b>	In Stock
<b>Uniprot ID</b>	P12830
<b>IgG type</b>	Rabbit/Human Fc chimeric IgG1
<b>Clonality</b>	Monoclonal
<b>Reactivity</b>	Human
<b>Applications</b>	Flow Cyt
<b>Recommended Dilutions</b>	Flow Cyt 1:100
<b>Purification</b>	Purified from cell culture supernatant by affinity chromatography
<b>Formulation &amp; Reconstitution</b>	Lyophilized from sterile PBS, pH 7.4. Normally 5 % - 8% trehalose is added as protectants before lyophilization. Please see Certificate of Analysis for specific instructions of reconstitution.
<b>Storage &amp; Shipping</b>	Store at -20°C to -80°C for 12 months in lyophilized form. After reconstitution, if not intended for use within a month, aliquot and store at -80°C (Avoid repeated freezing and thawing). Lyophilized proteins are shipped at ambient temperature.
<b>Background</b>	This gene encodes a classical cadherin of the cadherin superfamily. Alternative splicing results in multiple transcript variants; at least one of which encodes a preproprotein that is proteolytically processed to generate the mature glycoprotein. This calcium-dependent cell-cell adhesion protein is comprised of five extracellular cadherin repeats; a transmembrane region and a highly conserved cytoplasmic tail. Mutations in this gene are correlated with gastric; breast; colorectal; thyroid and ovarian cancer. Loss of function of this gene is thought to contribute to cancer progression by increasing proliferation; invasion; and/or metastasis. The ectodomain of this protein mediates bacterial adhesion to mammalian cells and the cytoplasmic domain is required for internalization. This gene is present in a gene cluster with other members of the cadherin family on chromosome 16. [provided by RefSeq; Nov 2015]
<b>Usage</b>	Research use only
<b>Conjugate</b>	Unconjugated
<b>DIMA Disclaimer</b>	All DIMA recombinant antibodies are genuinely generated by DIMA Biotech. They are all under patent application. Any protein sequencing or reverse engineering attempt is prohibited. We are actively scrutinizing all patent application to ensure no IP infringement.



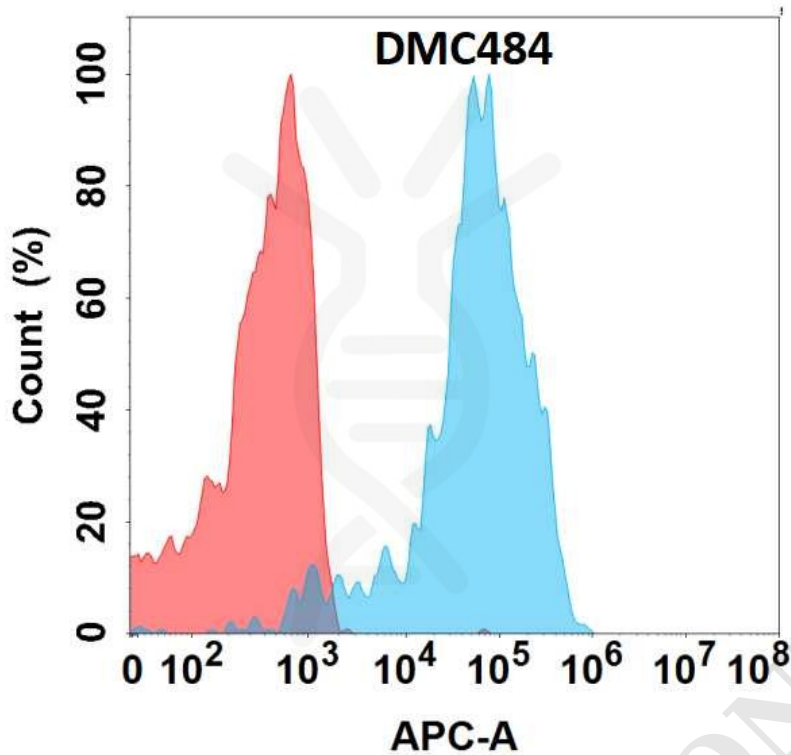


Figure 1. Flow cytometry analysis with Anti-CDH1 (DMC484) on Expi293 cells transfected with human CDH1 (Blue histogram) or Expi293 transfected with irrelevant protein (Red histogram).

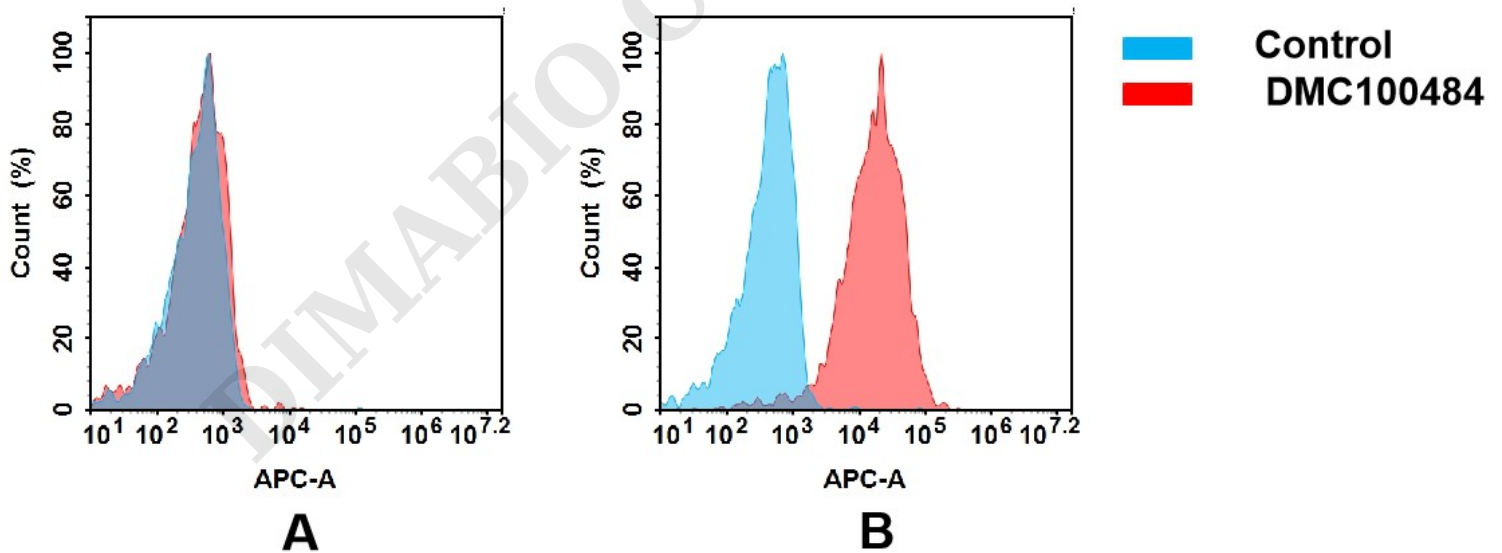


Figure 2. Flow cytometry analysis of antigen binding of anti-human CDH1 mAb( DMC100484).

(A) DMC100484 does not bind to CHO-S cells that do not express CDH1.

(B) A clear peak shift of DMC100484 was seen compared to the control when incubated with CDH1-expressing A431 cells, indicating strong binding of DMC100484 to CDH1. Antibodies were incubated at 5  $\mu$ g/mL.

