

PRODUCT INFORMATION

| | |
|---|---|
| Clone ID | DM119 |
| Target | CD7 |
| Synonyms | CD7;GP40;TP41;LEU-9;Tp40 |
| Host Species | Rabbit |
| Description | Anti-CD7 antibody(DM119); Rabbit mAb |
| Delivery | In Stock |
| Uniprot ID | P09564 |
| IgG type | Rabbit IgG |
| Clonality | Monoclonal |
| Reactivity | Human |
| Applications | ELISA; Flow Cyt |
| Recommended Dilutions | ELISA 1:5000-10000; Flow Cyt 1:100 |
| Purification | Purified from cell culture supernatant by affinity chromatography |
| Formulation & Reconstitution | Lyophilized from sterile PBS, pH 7.4. Normally 5% - 8% trehalose is added as protectants before lyophilization. Please see Certificate of Analysis for specific instructions of reconstitution. |
| Storage & Shipping | Store at -20°C to -80°C for 12 months in lyophilized form. After reconstitution, if not intended for use within a month, aliquot and store at -80°C (Avoid repeated freezing and thawing). Lyophilized proteins are shipped at ambient temperature. |
| Background | This gene encodes a transmembrane protein which is a member of the immunoglobulin superfamily. This protein is found on thymocytes and mature T cells. It plays an essential role in T-cell interactions and also in T-cell:B-cell interaction during early lymphoid development. |
| Usage | Research use only |
| Conjugate | Unconjugated |



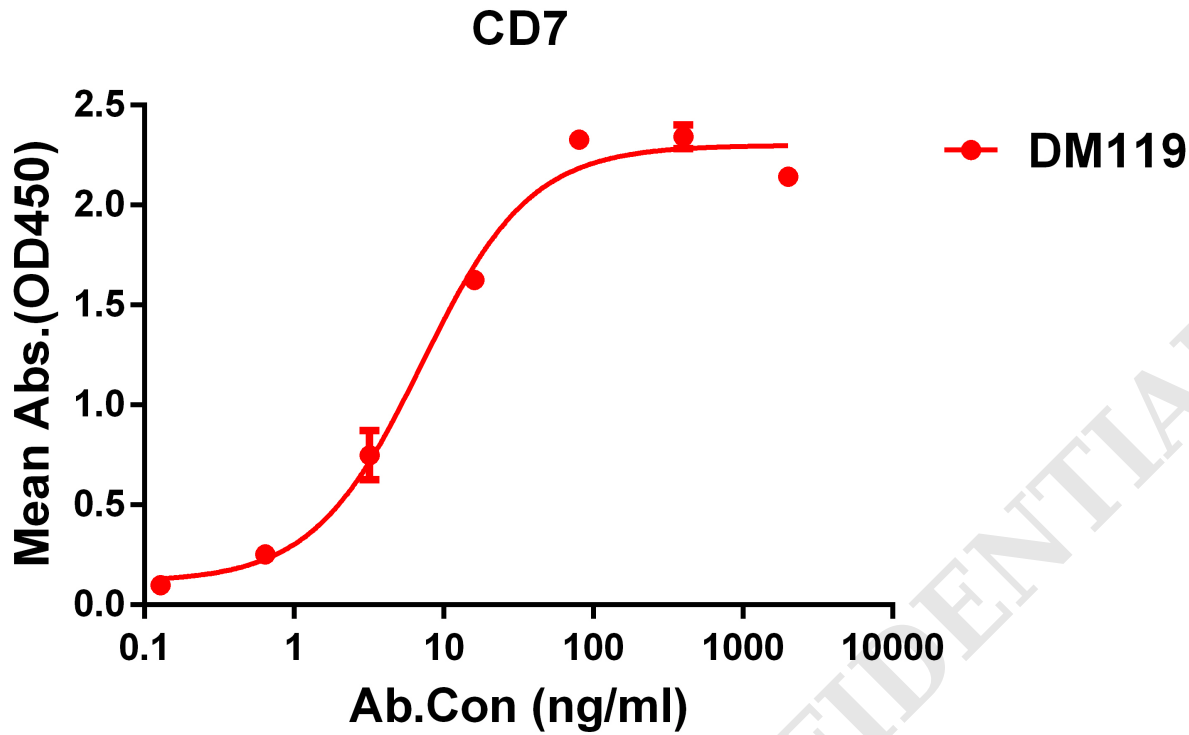


Figure 1. ELISA plate pre-coated by 1 $\mu\text{g/ml}$ (100 $\mu\text{l/well}$) Human CD7 protein, mFc-His tagged protein PME100464 can bind Rabbit anti-CD7 monoclonal antibody (clone: DM119) in a linear range of 0.2-60 ng/ml.

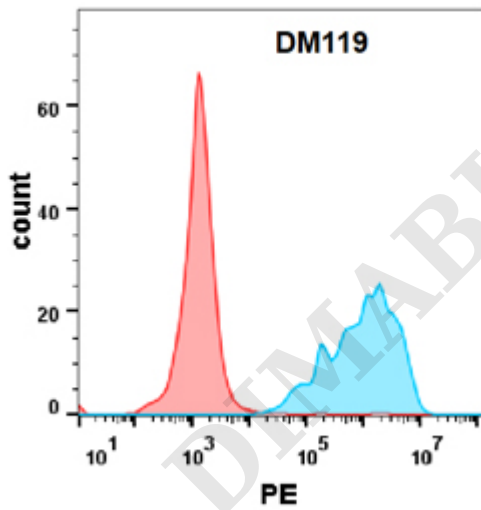


Figure 2. Flow cytometry analysis with Anti-CD7 (DM119) on Expi293 cells transfected with human CD7 (Blue histogram) or Expi293 transfected with irrelevant protein (Red histogram).



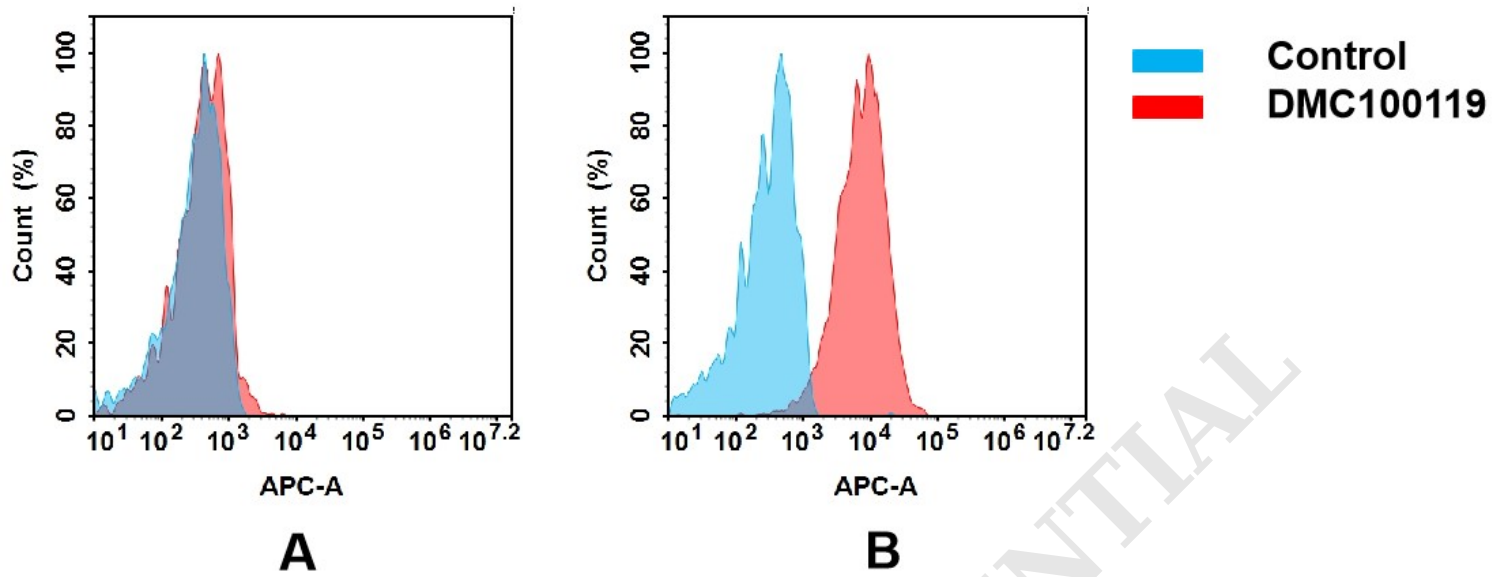


Figure 3. Flow cytometry analysis of antigen binding of rabbit anti-human CD7 mAb(DME100119).

(A) DME100119 does not bind to 293T cells that do not express CD7.

(B) A clear peak shift of DME100119 was seen compared to the control when incubated with CD7-expressing Jurkat cells, indicating strong binding of DME100119 to CD7. Antibodies were incubated at 10 μ g/mL.

DIMABIO CONFIDENTIAL

