

PRODUCT INFORMATION

Uniprot ID	P30203
Common Name	T1h
Synonyms	TP120
Applications	ELISA, Flow Cyt
Recommended Dilutions	ELISA 1:5000-10000, Flow Cyt 1:100
Formulation & Reconstitution	Lyophilized from sterile PBS, pH 7.4. Normally 5% - 8% trehalose is added as protectants before lyophilization. Please see Certificate of Analysis for specific instructions of reconstitution.
Host Species	Humanized
IgG type	IgG1(E239D,M241L)
Reactivity	Human
Target	CD6
Description	Anti-CD6(itolizumab biosimilar) mAb
Delivery	In Stock
Storage & Shipping	Store at -20°C to -80°C for 12 months in lyophilized form. After reconstitution, if not intended for use within a month, aliquot and store at -80°C (Avoid repeated freezing and thawing). Lyophilized antibodies are shipped at ambient temperature.
Background	Research grade biosimilar. Not for use in therapeutic or diagnostic procedures for humans or animals.
Usage	Research use only
Conjugate	Unconjugated



Anti-CD6(itolizumab biosimilar) mAb ELISA

0.2 μ g of Human CD6, His tagged protein per well

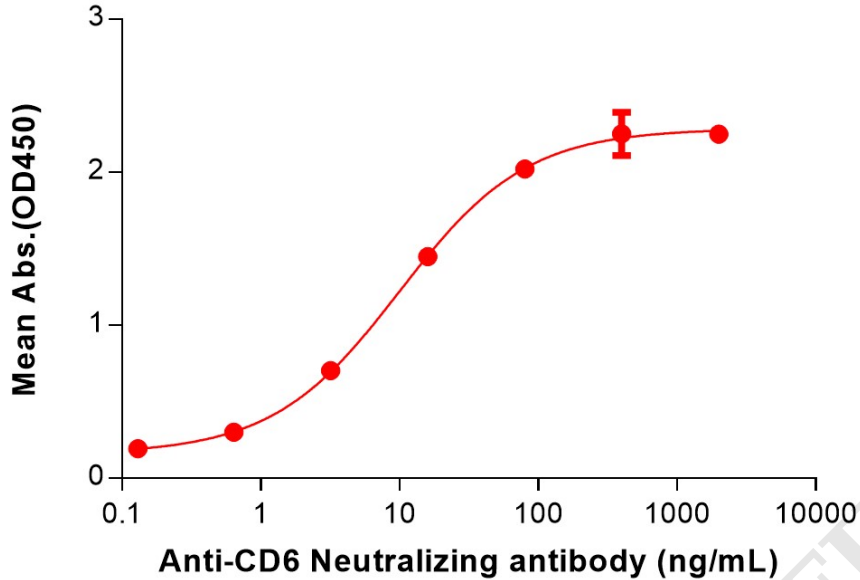


Figure 1. ELISA plate pre-coated by 2 μ g/mL (100 μ L/well) Human CD6 Protein, His Tag (PME101039) can bind Anti-CD6(itolizumab biosimilar) mAb (BME100214) in a linear range of 0.64–80 ng/mL.

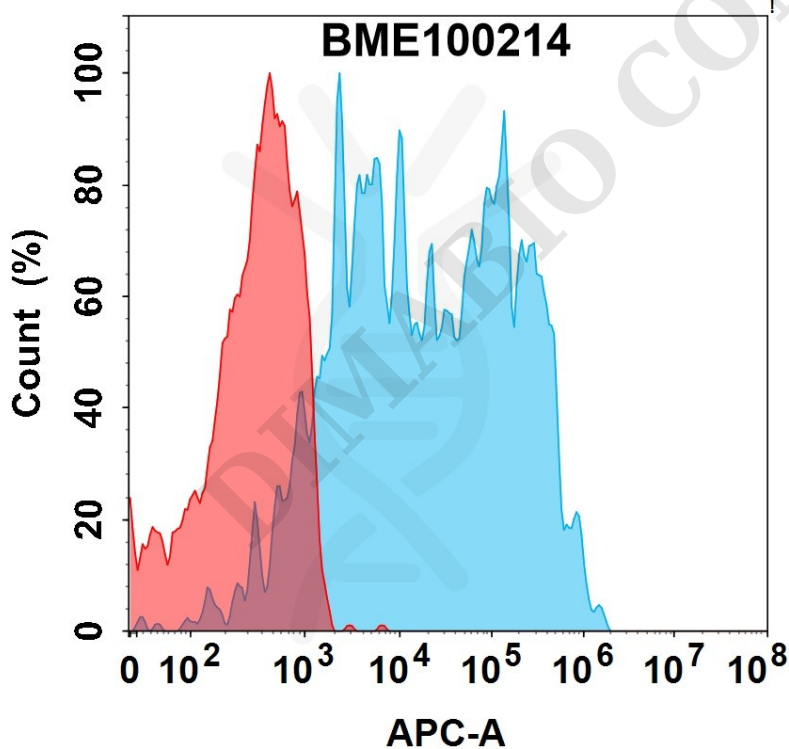


Figure 2. Flow cytometry analysis with 15 μ g/mL Anti-CD6(itolizumab biosimilar) mAb (BME100214) on Expi293 cells transfected with Human CD6 protein (Blue histogram) or Expi293 transfected with irrelevant protein (Red histogram).

