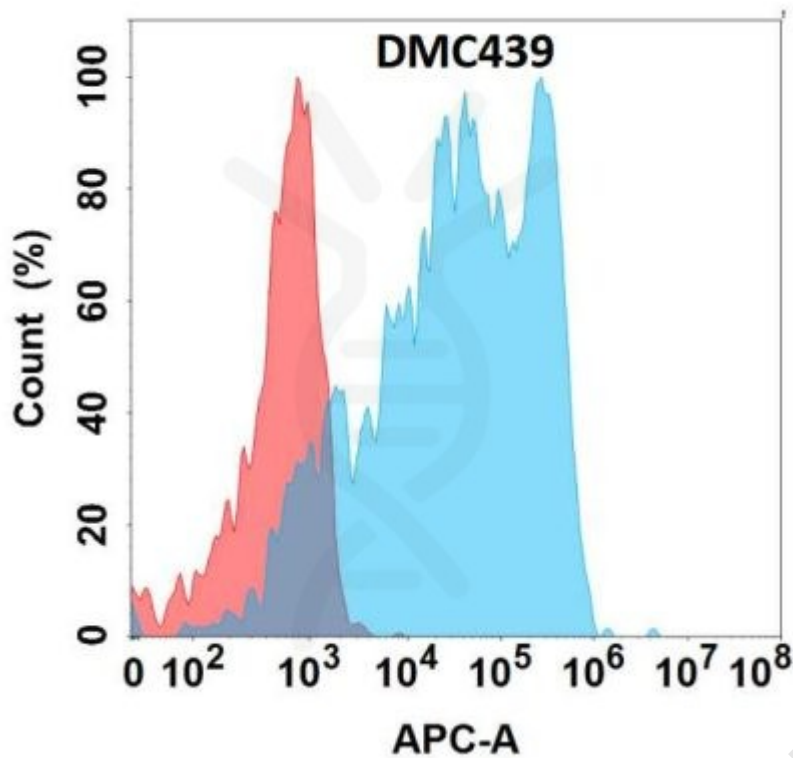


**PRODUCT INFORMATION**

<b>Clone ID</b>	DMC439
<b>Target</b>	CD62L
<b>Synonyms</b>	CD62L; LAM1; LECAM1; LEU8; LNHR; LSEL; LYAM1; PLNHR; TQ1
<b>Host Species</b>	Rabbit
<b>Description</b>	Anti-CD62L antibody(DMC439); IgG1 Chimeric mAb
<b>Delivery</b>	In Stock
<b>Uniprot ID</b>	P14151
<b>IgG type</b>	Rabbit/Human Fc chimeric IgG1
<b>Clonality</b>	Monoclonal
<b>Reactivity</b>	Human
<b>Applications</b>	Flow Cyt
<b>Recommended Dilutions</b>	Flow Cyt 1:100
<b>Purification</b>	Purified from cell culture supernatant by affinity chromatography
<b>Formulation &amp; Reconstitution</b>	Lyophilized from sterile PBS, pH 7.4. Normally 5 % - 8% trehalose is added as protectants before lyophilization. Please see Certificate of Analysis for specific instructions of reconstitution.
<b>Storage &amp; Shipping</b>	Store at -20°C to -80°C for 12 months in lyophilized form. After reconstitution, if not intended for use within a month, aliquot and store at -80°C (Avoid repeated freezing and thawing). Lyophilized proteins are shipped at ambient temperature.
<b>Background</b>	This gene encodes a cell surface adhesion molecule that belongs to a family of adhesion: homing receptors. The encoded protein contains a C-type lectin-like domain; a calcium-binding epidermal growth factor-like domain; and two short complement-like repeats. The gene product is required for binding and subsequent rolling of leucocytes on endothelial cells; facilitating their migration into secondary lymphoid organs and inflammation sites. Single-nucleotide polymorphisms in this gene have been associated with various diseases including immunoglobulin A nephropathy. Alternatively spliced transcript variants have been found for this gene.
<b>Usage</b>	Research use only
<b>Conjugate</b>	Unconjugated





**Figure 1.** Flow cytometry analysis with Anti-CD62L (DMC439) on Expi293 cells transfected with human CD62L (Blue histogram) or Expi293 transfected with irrelevant protein (Red histogram).

CONFIDENTIAL

