

PRODUCT INFORMATION

| | |
|---|---|
| Common Name | TJ-011133, TJC-4 |
| Synonyms | CD47;MER6;IAP |
| Applications | ELISA; Flow Cyt |
| Recommended Dilutions | ELISA 1:5000-10000; Flow Cyt 1:100 |
| Formulation & Reconstitution | Lyophilized from sterile PBS, pH 7.4. Normally 5% - 8% trehalose is added as protectants before lyophilization. Please see Certificate of Analysis for specific instructions of reconstitution. |
| Host Species | Humanized |
| IgG type | IgG4 |
| Reactivity | Human |
| Target | CD47 |
| Uniprot ID | Q08722 |
| Description | Anti-CD47(lemzoparlimab biosimilar) mAb |
| Delivery | In Stock |
| Storage & Shipping | Store at -20°C to -80°C for 12 months in lyophilized form. After reconstitution, if not intended for use within a month, aliquot and store at -80°C (Avoid repeated freezing and thawing). Lyophilized proteins are shipped at ambient temperature. |
| Background | Research grade biosimilar. Not for use in therapeutic or diagnostic procedures for humans or animals. |
| Usage | Research use only |



Anti-CD47 (lemzoparlimab biosimilar) mAb ELISA

0.1 μg of Human CD47, mFc-His tagged protein per well

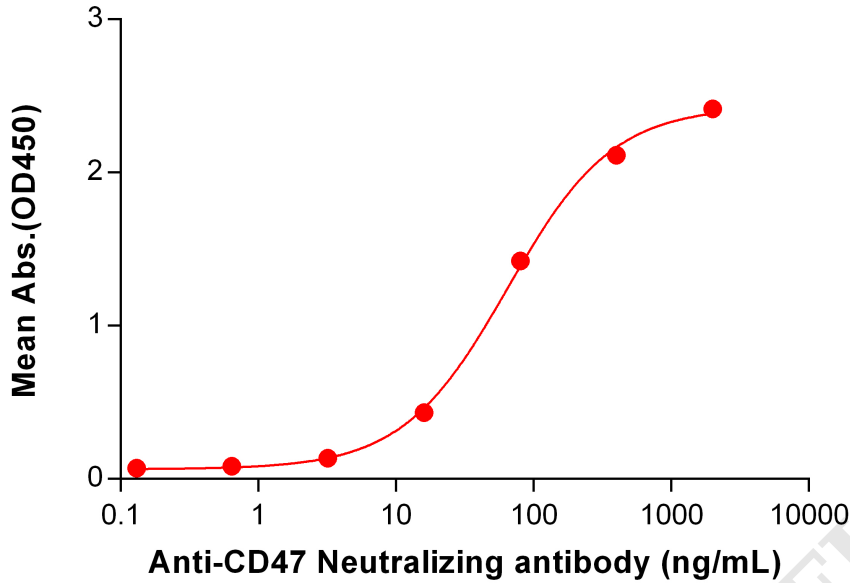


Figure 1. ELISA plate pre-coated by 1 $\mu\text{g}/\text{mL}$ (100 $\mu\text{L}/\text{well}$) Human CD47 protein, mFc-His Tag PME100008 can bind Anti-CD47 Neutralizing antibody (BME100076) in a linear range of 3.2-400 ng/mL.

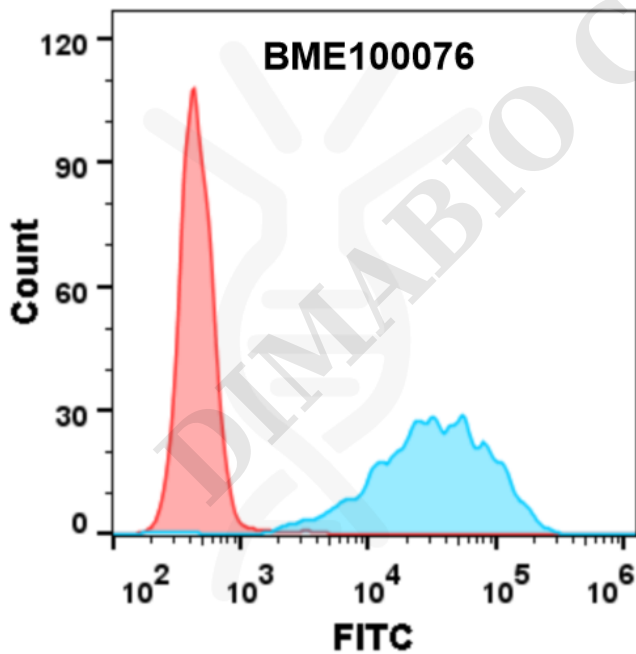


Figure 2. Jurkat cell line were surface stained with anti-CD47 (BME100076) (Blue histogram) and isotype control (Red histogram) 1 $\mu\text{g}/\text{ml}$ followed by Alexa 488-conjugated Goat anti-Human IgG secondary antibody.



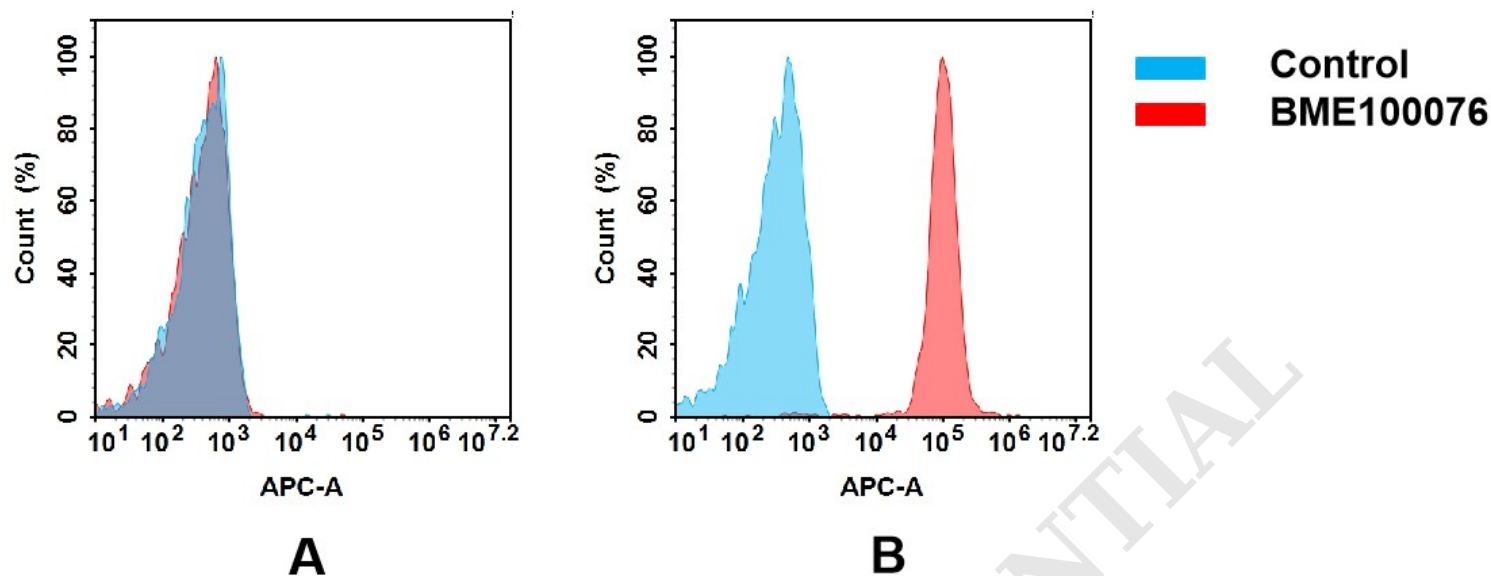


Figure 3. Flow cytometry analysis of antigen binding of anti-human CD47 mAb(BME100076).

(A) BME100076 does not bind to CHO-S cells that do not express CD47.

(B) A clear peak shift of BME100076 was seen compared to the control when incubated with CD47-expressing 8226 cells, indicating strong binding of BME100076 to CD47. Antibodies were incubated at 5 μ g/mL.

DIMABIO CONFIDENTIAL

