

PRODUCT INFORMATION

Clone ID	DM212
Target	CD47
Synonyms	CD47; MER6; IAP; OA3
Host Species	Rabbit
Description	Anti-CD47 antibody(DM212); Rabbit mAb
Delivery	In Stock
Uniprot ID	Q08722
IgG type	Rabbit IgG
Clonality	Monoclonal
Reactivity	Human
Applications	ELISA; Flow Cyt
Recommended Dilutions	ELISA 1:5000-10000; Flow Cyt 1:100
Purification	Purified from cell culture supernatant by affinity chromatography
Formulation & Reconstitution	Lyophilized from sterile PBS, pH 7.4. Normally 5 % - 8% trehalose is added as protectants before lyophilization. Please see Certificate of Analysis for specific instructions of reconstitution.
Storage & Shipping	Store at -20°C to -80°C for 12 months in lyophilized form. After reconstitution, if not intended for use within a month, aliquot and store at -80°C (Avoid repeated freezing and thawing). Lyophilized proteins are shipped at ambient temperature.
Background	Leukocyte surface antigen CD47 is also known as Antigenic surface determinant protein OA3; Integrin-associated protein (IAP) and Protein MER6. CD47 contains 1 Ig-like V-type (immunoglobulin-like) domain. CD47 is very broadly distributed on normal adult tissues. CD47 has a role in both cell adhesion by acting as an adhesion receptor for THBS1 on platelets; and in the modulation of integrins and plays an important role in memory formation and synaptic plasticity in the hippocampus by similarity. CD47 is the receptor for SIRPA; binding to which prevents maturation of immature dendritic cells and inhibits cytokine production by mature dendritic cells. CD47 Interaction with SIRPG mediates cell-cell adhesion; enhances superantigen-dependent T-cell-mediated proliferation and costimulates T-cell activation.
Usage	Research use only
Conjugate	Unconjugated



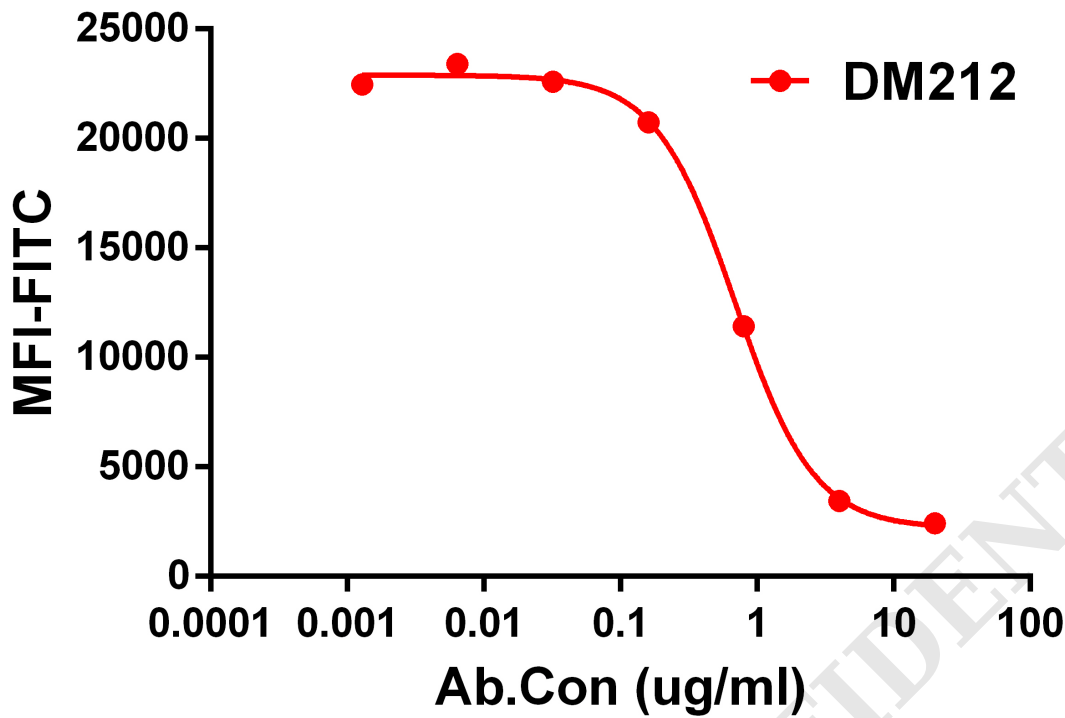


Figure 1. Competition assay demonstrating DM212 blockade of SIRP α binding to Jurkat cell line.

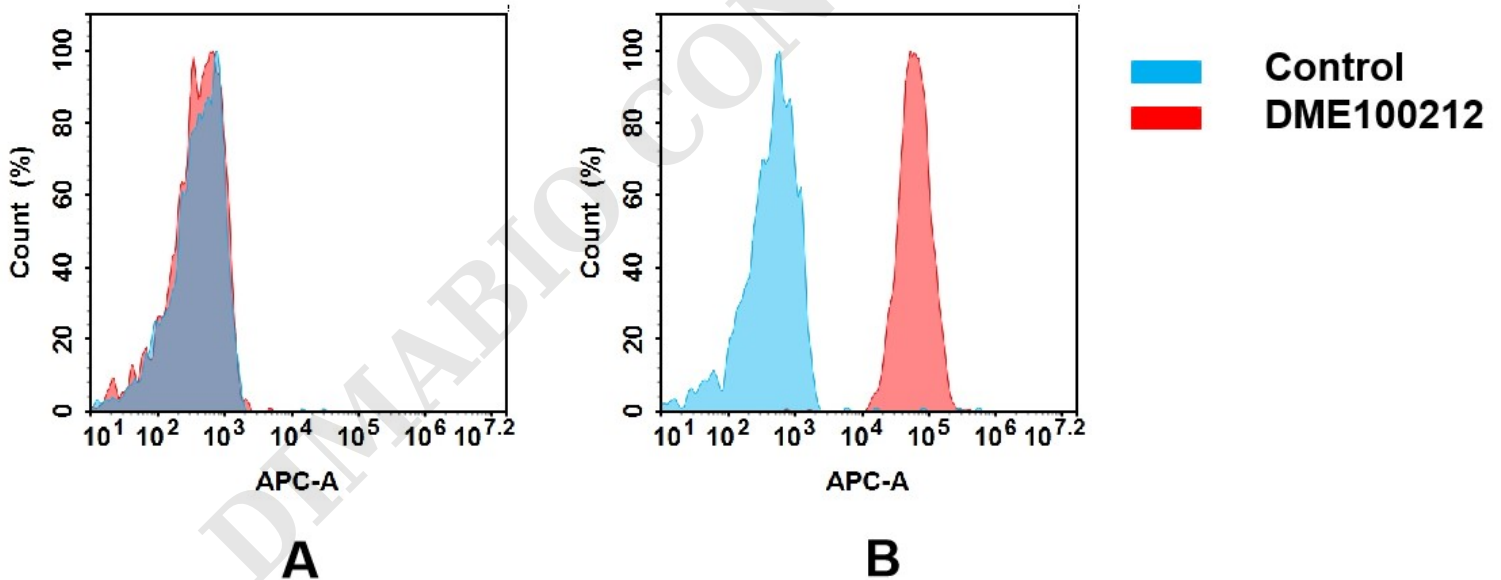


Figure 2. Flow cytometry analysis of antigen binding of rabbit anti-human CD47 mAb(DME100212).

(A) DME100212 does not bind to CHO-S cells that do not express CD47.

(B) A clear peak shift of DME100212 was seen compared to the control when incubated with CD47-expressing SNU-5 cells, indicating strong binding of DME100212 to CD47. Antibodies were incubated at 5 μ g/ml.



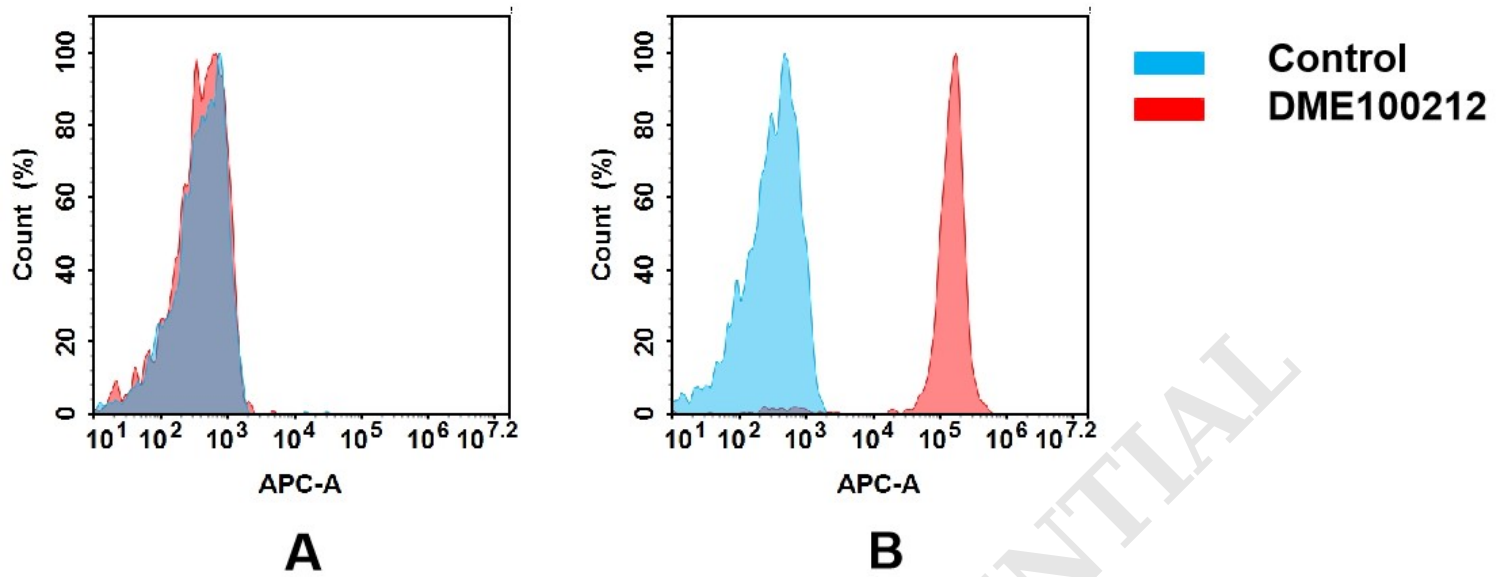


Figure 3. Flow cytometry analysis of antigen binding of rabbit anti-human CD47 mAb(DME100212).

(A) DME100212 does not bind to CHO-S cells that do not express CD47.

(B) A clear peak shift of DME100212 was seen compared to the control when incubated with CD47-expressing 8226 cells, indicating strong binding of DME100212 to CD47. Antibodies were incubated at 5 μ g/ml.

DIMABIO CONFIDENTIAL

