

PRODUCT INFORMATION

Clone ID	DM145
Target	CD46
Synonyms	CD46;AHUS2;MCP;MIC10;TLX;TRA2.10
Host Species	Rabbit
Description	Anti-CD46 antibody(DM145); Rabbit mAb
Delivery	In Stock
Uniprot ID	P15529
IgG type	Rabbit IgG
Clonality	Monoclonal
Reactivity	Human
Applications	ELISA; Flow Cyt
Recommended Dilutions	ELISA 1:5000-10000; Flow Cyt 1:100
Purification	Purified from cell culture supernatant by affinity chromatography
Formulation & Reconstitution	Lyophilized from sterile PBS, pH 7.4. Normally 5 % - 8% trehalose is added as protectants before lyophilization. Please see Certificate of Analysis for specific instructions of reconstitution.
Storage & Shipping	Store at -20°C to -80°C for 12 months in lyophilized form. After reconstitution, if not intended for use within a month, aliquot and store at -80°C (Avoid repeated freezing and thawing). Lyophilized proteins are shipped at ambient temperature.
Background	The protein encoded by this gene is a type I membrane protein and is a regulatory part of the complement system. The encoded protein has cofactor activity for inactivation of complement components C3b and C4b by serum factor I; which protects the host cell from damage by complement. In addition; the encoded protein can act as a receptor for the Edmonston strain of measles virus; human herpesvirus-6; and type IV pili of pathogenic Neisseria. Finally; the protein encoded by this gene may be involved in the fusion of the spermatozoa with the oocyte during fertilization. Mutations at this locus have been associated with susceptibility to hemolytic uremic syndrome. Alternatively spliced transcript variants encoding different isoforms have been described.
Usage	Research use only
Conjugate	Unconjugated



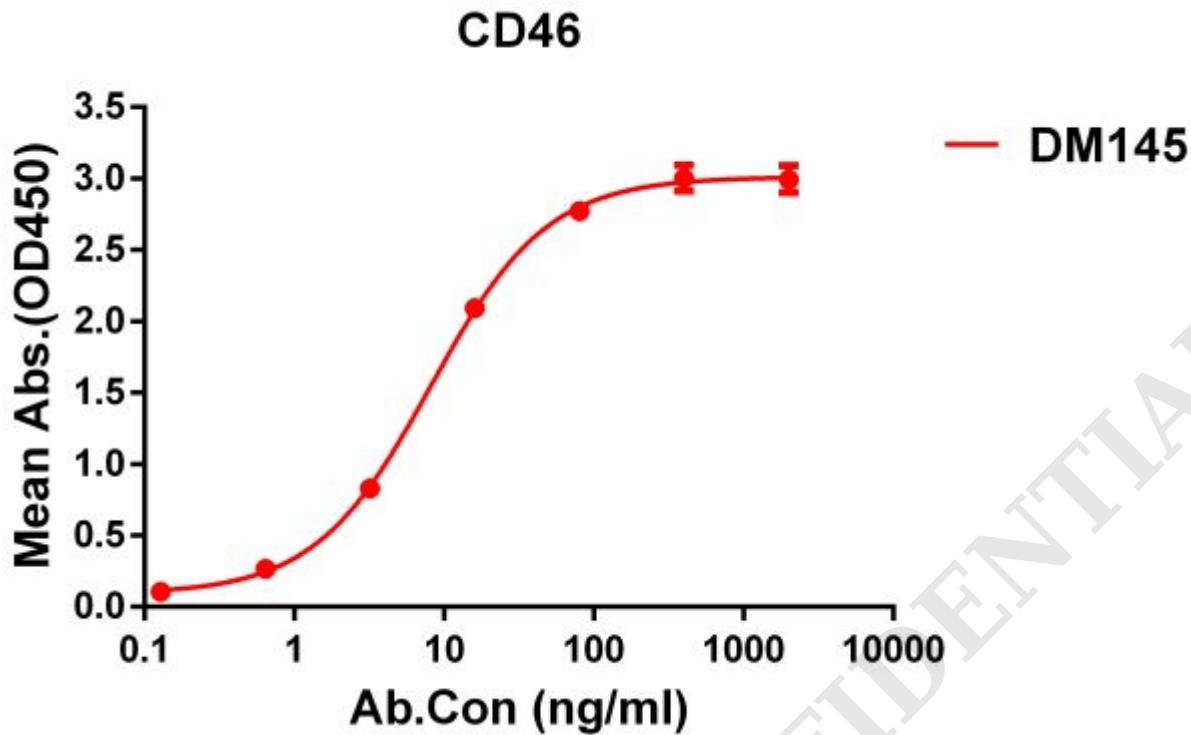


Figure 1. ELISA plate pre-coated by 1 μ g/ml (100 μ l/well) Human CD46 protein, His tagged protein ([getskuurl sku="PME100102"]) can bind Rabbit anti-CD46 monoclonal antibody(clone: **DM145**) in a linear range of 1-60 ng/ml.

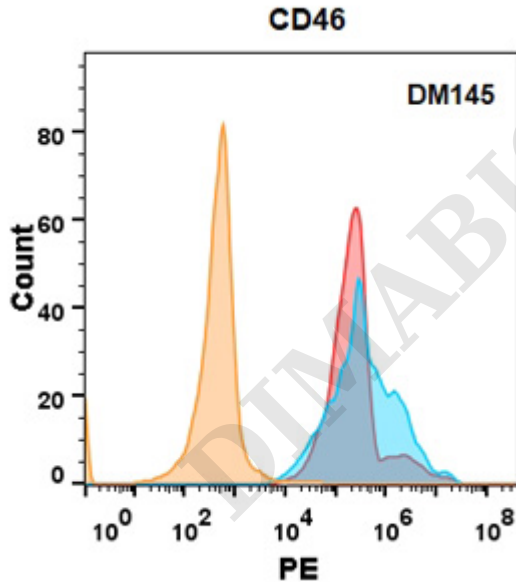


Figure 2. CD46 protein is highly expressed on the surface of Expi293 cell membrane. Flow cytometry analysis with Anti-CD46 (DM145) on Expi293 cells transfected with human CD46 (Blue histogram) or Expi293 transfected with irrelevant protein (Red histogram), and Isotype antibody on Expi293 transfected with irrelevant protein (Orange histogram).

