

PRODUCT INFORMATION

Clone ID	DMC269
Target	CD44
Synonyms	CD44;CDW44;CSPG8;ECMR-III;HCELL;HUTCH-I;IN;LHR;MC56;MDU2;MDU3;MIC4;Pgp1;Epican
Host Species	Rabbit
Description	Anti-CD44 antibody(DMC269); IgG1 Chimeric mAb
Delivery	In Stock
Uniprot ID	P16070
IgG type	Rabbit/Human Fc chimeric IgG1
Clonality	Monoclonal
Reactivity	Human
Applications	Flow Cyt
Recommended Dilutions	Flow Cyt 1:100
Purification	Purified from cell culture supernatant by affinity chromatography
Formulation & Reconstitution	Lyophilized from sterile PBS, pH 7.4. Normally 5 % - 8% trehalose is added as protectants before lyophilization. Please see Certificate of Analysis for specific instructions of reconstitution.
Storage & Shipping	Store at -20°C to -80°C for 12 months in lyophilized form. After reconstitution, if not intended for use within a month, aliquot and store at -80°C (Avoid repeated freezing and thawing). Lyophilized proteins are shipped at ambient temperature.
Background	The protein encoded by this gene is a cell-surface glycoprotein involved in cell-cell interactions; cell adhesion and migration. It is a receptor for hyaluronic acid (HA) and can also interact with other ligands; such as osteopontin; collagens; and matrix metalloproteinases (MMPs). This protein participates in a wide variety of cellular functions including lymphocyte activation; recirculation and homing; hematopoiesis; and tumor metastasis. Transcripts for this gene undergo complex alternative splicing that results in many functionally distinct isoforms; however, the full length nature of some of these variants has not been determined. Alternative splicing is the basis for the structural and functional diversity of this protein; and may be related to tumor metastasis.
Usage	Research use only
Conjugate	Unconjugated
DIMA Disclaimer	All DIMA recombinant antibodies are genuinely generated by DIMA Biotech. They are all under patent application. Any protein sequencing or reverse engineering attempt is prohibited. We are actively scrutinizing all patent application to ensure no IP infringement.



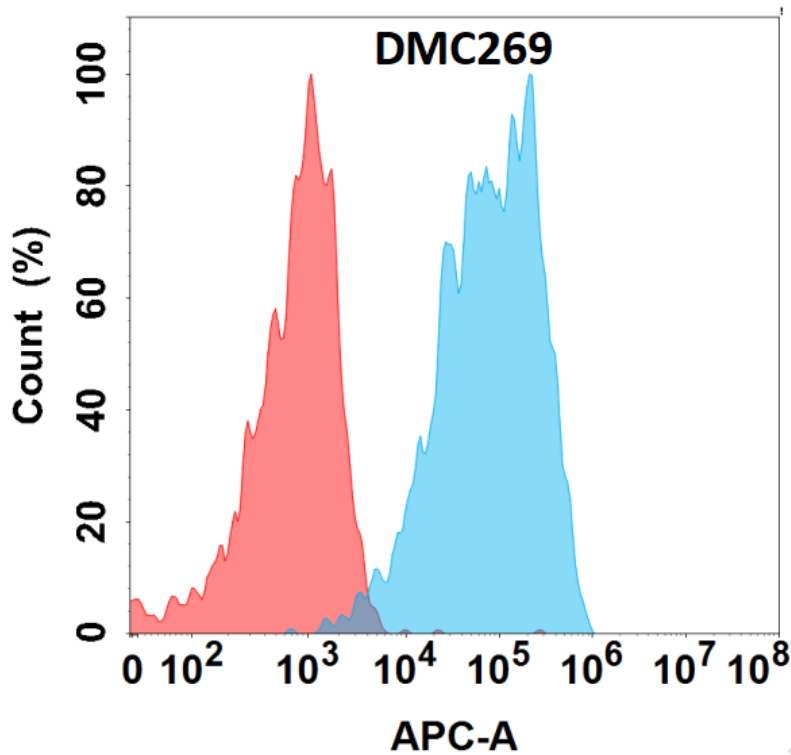


Figure 1. Flow cytometry analysis with Anti-CD44 (DMC269) on Expi293 cells transfected with human CD44 (Blue histogram) or Expi293 transfected with irrelevant protein (Red histogram).

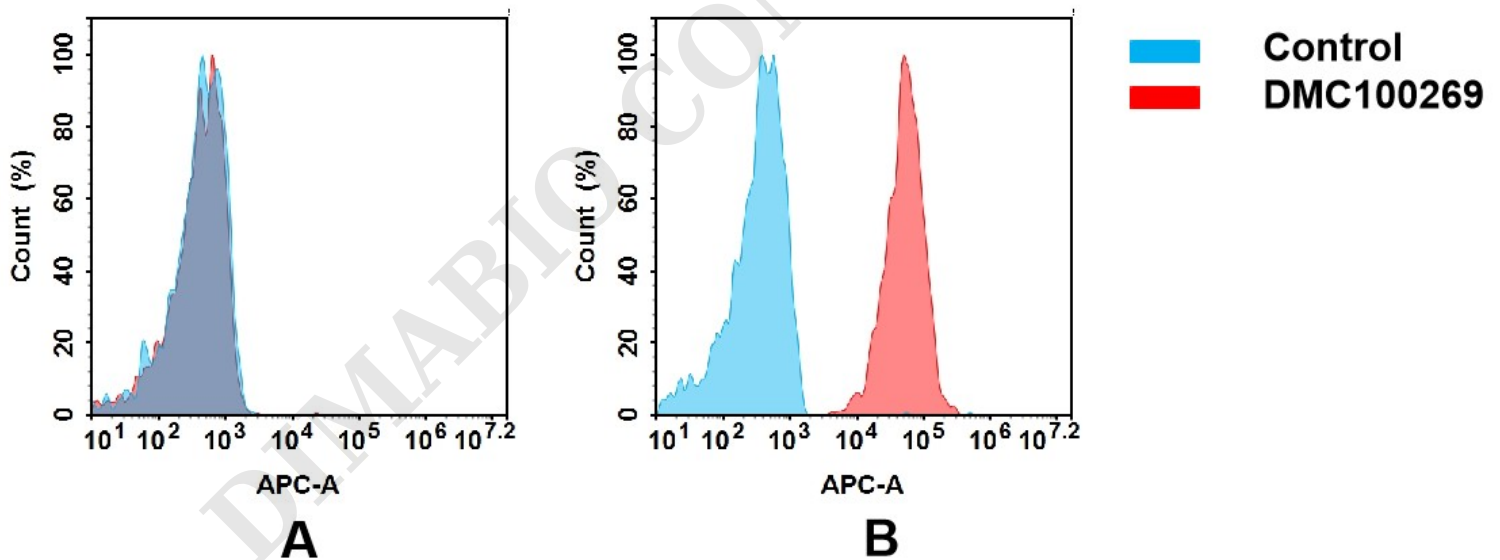


Figure 2. Flow cytometry analysis of antigen binding of anti-human CD44 mAb(DMC100269).

(A) DMC100269 does not bind to CHO-S cells that do not express CD44.

(B) A clear peak shift of DMC100269 was seen compared to the control when incubated with CD44-expressing THP-1 cells, indicating strong binding of DMC100269 to CD44. Antibodies were incubated at 5 μ g/mL.

