

PRODUCT INFORMATION

| | |
|---|---|
| Clone ID | DM166 |
| Target | CD37 |
| Synonyms | CD37; TSPAN26; Tspan-26 |
| Host Species | Rabbit |
| Description | Anti-CD37 antibody(DM166); Rabbit mAb |
| Delivery | In Stock |
| Uniprot ID | P11049 |
| IgG type | Rabbit IgG |
| Clonality | Monoclonal |
| Reactivity | Human |
| Applications | ELISA; Flow Cyt |
| Recommended Dilutions | ELISA 1:5000-10000; Flow Cyt 1:100 |
| Purification | Purified from cell culture supernatant by affinity chromatography |
| Formulation & Reconstitution | Lyophilized from sterile PBS, pH 7.4. Normally 5 % - 8% trehalose is added as protectants before lyophilization. Please see Certificate of Analysis for specific instructions of reconstitution. |
| Storage & Shipping | Store at -20°C to -80°C for 12 months in lyophilized form. After reconstitution, if not intended for use within a month, aliquot and store at -80°C (Avoid repeated freezing and thawing). Lyophilized proteins are shipped at ambient temperature. |
| Background | The protein encoded by this gene is a member of the transmembrane 4 superfamily; also known as the tetraspanin family. Most of these members are cell-surface proteins that are characterized by the presence of four hydrophobic domains. The proteins mediate signal transduction events that play a role in the regulation of cell development; activation; growth and motility. This encoded protein is a cell surface glycoprotein that is known to complex with integrins and other transmembrane 4 superfamily proteins. It may play a role in T-cell-B-cell interactions. Alternate splicing results in multiple transcript variants encoding different isoforms. |
| Usage | Research use only |



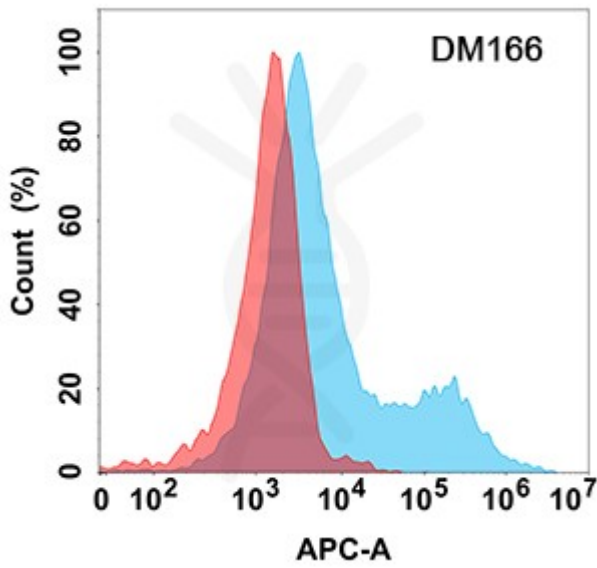


Figure 1. Flow cytometry analysis with Anti-CD37 (DM166) on Expi293 cells transfected with human CD37 (Blue histogram) or Expi293 transfected with irrelevant protein (Red histogram).

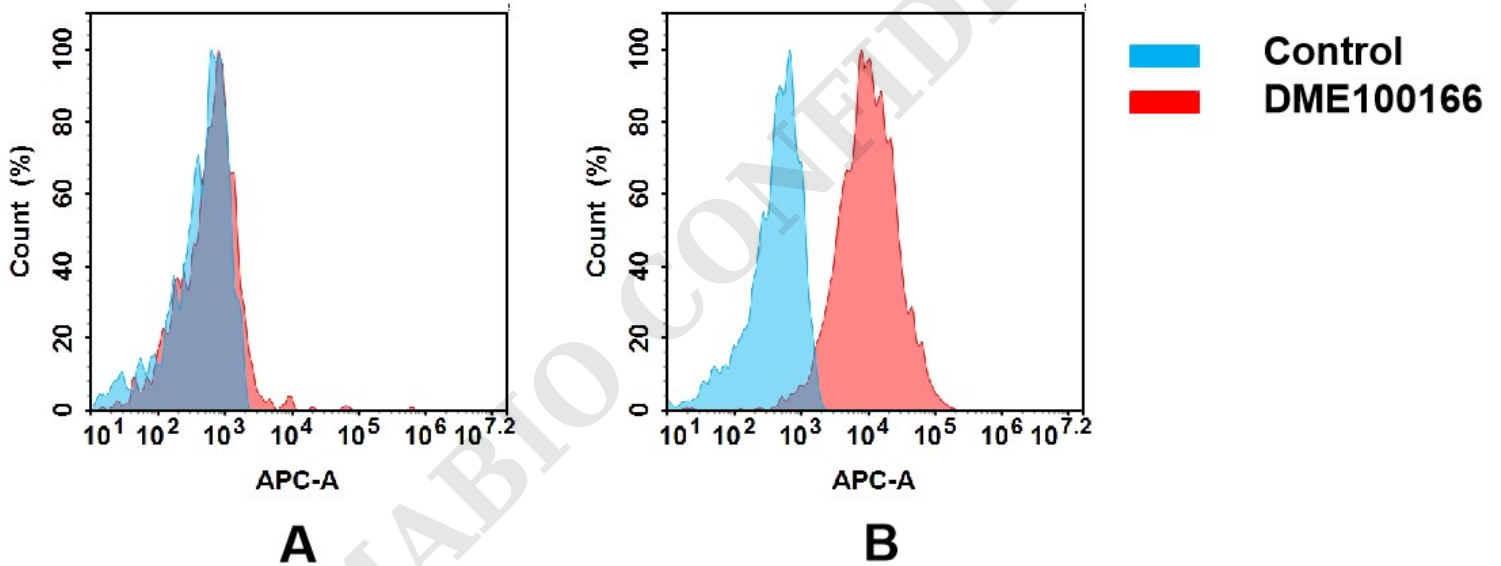


Figure 2. Flow cytometry analysis of antigen binding of rabbit anti-human CD37 mAb(DME100166).

(A) DME100166 does not bind to 293T cells that do not express CD37.

(B) A clear peak shift of DME100166 was seen compared to the control when incubated with CD37-expressing THP-1 cells, indicating strong binding of DME100166 to CD37. Antibodies were incubated at 5 µg/mL.

