

**PRODUCT INFORMATION**

<b>Clone ID</b>	DMC494
<b>Target</b>	CD32a
<b>Synonyms</b>	CD32; CD32A; CDw32; FCG2; FcGR; FCGR2; FCGR2A1; IGFR2
<b>Host Species</b>	Rabbit
<b>Description</b>	Anti-CD32a antibody(DMC494); IgG1 Chimeric mAb
<b>Delivery</b>	In Stock
<b>Uniprot ID</b>	P12318
<b>IgG type</b>	Rabbit/Human Fc chimeric IgG1
<b>Clonality</b>	Monoclonal
<b>Reactivity</b>	Human
<b>Applications</b>	Flow Cyt
<b>Recommended Dilutions</b>	Flow Cyt 1:100
<b>Purification</b>	Purified from cell culture supernatant by affinity chromatography
<b>Formulation &amp; Reconstitution</b>	Lyophilized from sterile PBS, pH 7.4. Normally 5 % - 8% trehalose is added as protectants before lyophilization. Please see Certificate of Analysis for specific instructions of reconstitution.
<b>Storage &amp; Shipping</b>	Store at -20°C to -80°C for 12 months in lyophilized form. After reconstitution, if not intended for use within a month, aliquot and store at -80°C (Avoid repeated freezing and thawing). Lyophilized proteins are shipped at ambient temperature.
<b>Background</b>	This gene encodes one member of a family of immunoglobulin Fc receptor genes found on the surface of many immune response cells. The protein encoded by this gene is a cell surface receptor found on phagocytic cells such as macrophages and neutrophils; and is involved in the process of phagocytosis and clearing of immune complexes. Alternative splicing results in multiple transcript variants. [provided by RefSeq; Oct 2008]
<b>Usage</b>	Research use only
<b>Conjugate</b>	Unconjugated



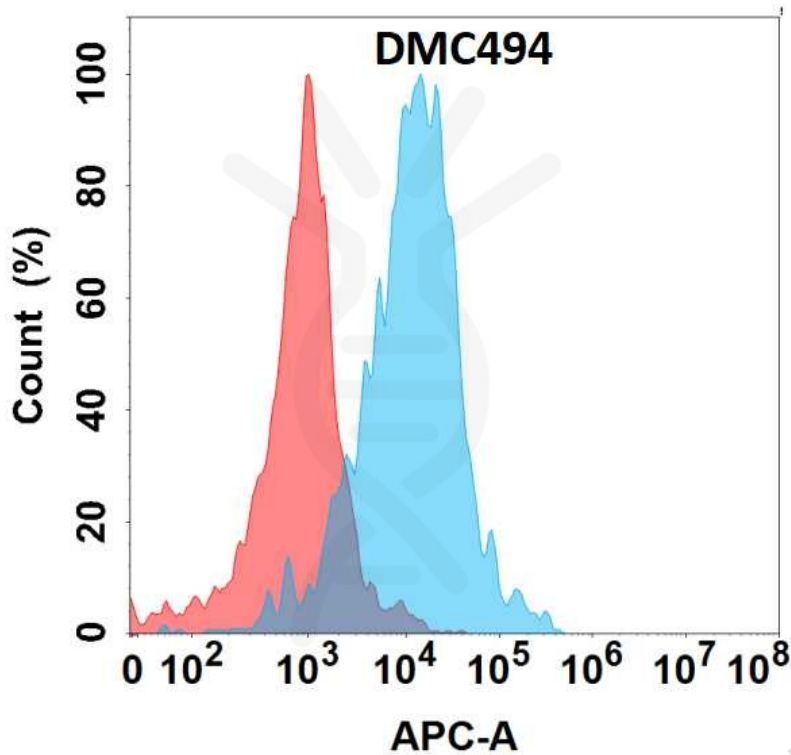


Figure 1. Flow cytometry analysis with Anti-CD32a (DMC494) on Expi293 cells transfected with human CD32a (Blue histogram) or Expi293 transfected with irrelevant protein (Red histogram).

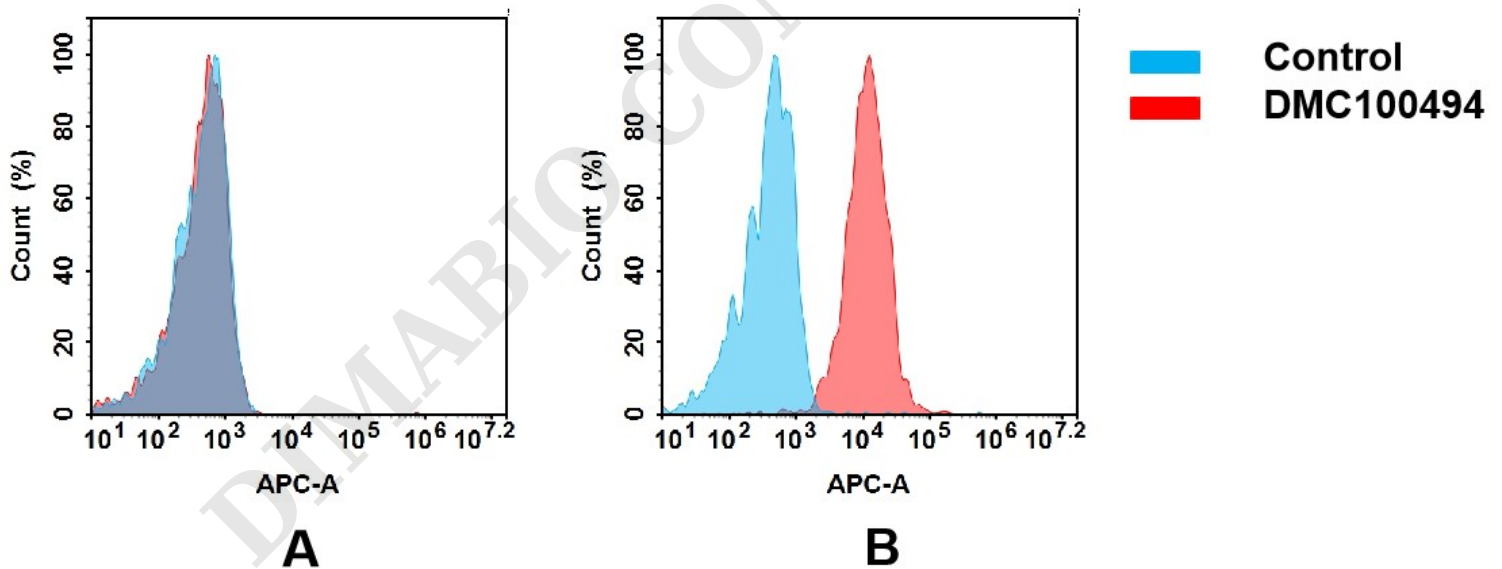


Figure 2. Flow cytometry analysis of antigen binding of anti-human CD32a mAb(DMC100494).

(A) DMC100494 does not bind to CHO-S cells that do not express CD32a.

(B) A clear peak shift of DMC100494 was seen compared to the control when incubated with CD32a-expressing THP-1 cells, indicating strong binding of DMC100494 to CD32a. Antibodies were incubated at 5  $\mu$ g/mL.

