

**PRODUCT INFORMATION**

<b>Common Name</b>	ACD22-VCMAE, DCDT2980S, FCU2803, RG-7593, RO5541072-000
<b>Synonyms</b>	CD22;SIGLEC2;BL-CAM;SIGLEC-2;Siglec2;SIGLEC2FLJ22814
<b>Applications</b>	ELISA; Flow Cyt
<b>Recommended Dilutions</b>	ELISA 1:5000-10000; Flow Cyt 1:100
<b>Formulation &amp; Reconstitution</b>	Lyophilized from sterile PBS, pH 7.4. Normally 5 % - 8% trehalose is added as protectants before lyophilization. Please see Certificate of Analysis for specific instructions of reconstitution.
<b>Host Species</b>	Humanized
<b>IgG type</b>	IgG1
<b>Reactivity</b>	Human
<b>Target</b>	CD22
<b>Uniprot ID</b>	P20273
<b>Description</b>	Anti-CD22 (pinatuzumab biosimilar) mAb
<b>Delivery</b>	In Stock
<b>Storage &amp; Shipping</b>	Store at -20°C to -80°C for 12 months in lyophilized form. After reconstitution, if not intended for use within a month, aliquot and store at -80°C (Avoid repeated freezing and thawing). Lyophilized proteins are shipped at ambient temperature.
<b>Background</b>	Research grade biosimilar. Not for use in therapeutic or diagnostic procedures for humans or animals.
<b>Usage</b>	Research use only

DIMABIO CONFIDENTIAL



## Anti-CD22 (pinatuzumab vedotin biosimilar) mAb ELISA

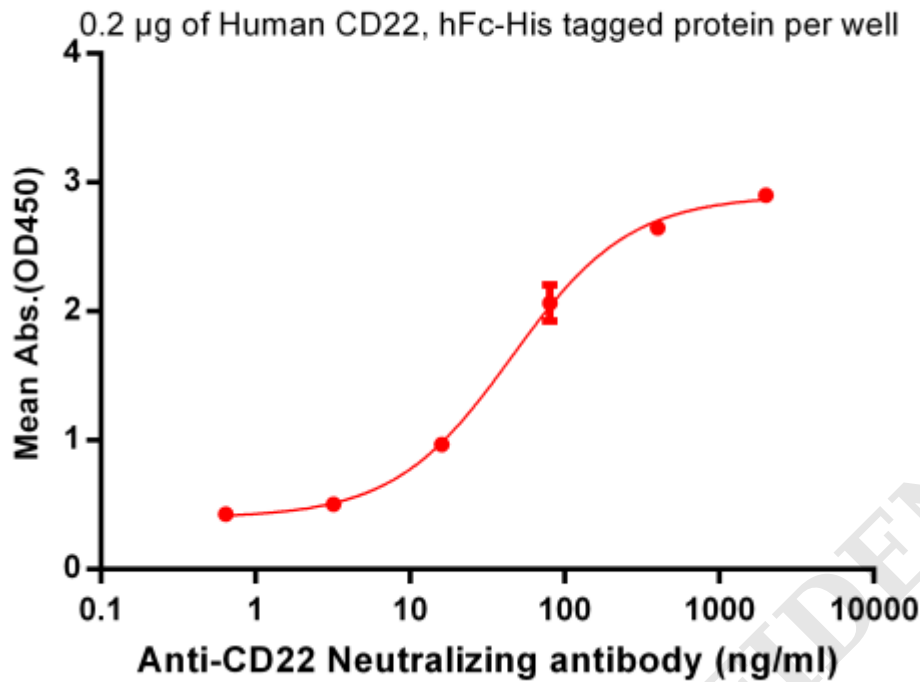


Figure 1. ELISA plate pre-coated by 2  $\mu\text{g}/\text{ml}$  (100  $\mu\text{L}/\text{well}$ ) Human CD22, hFc-His tagged protein (PME100005) can bind Anti-CD22 Neutralizing antibody in a linear range of 3.2-400 ng/ml. In order to specifically detect BME100029, mouse anti-human Fab-specific antibody was used as detection antibody.

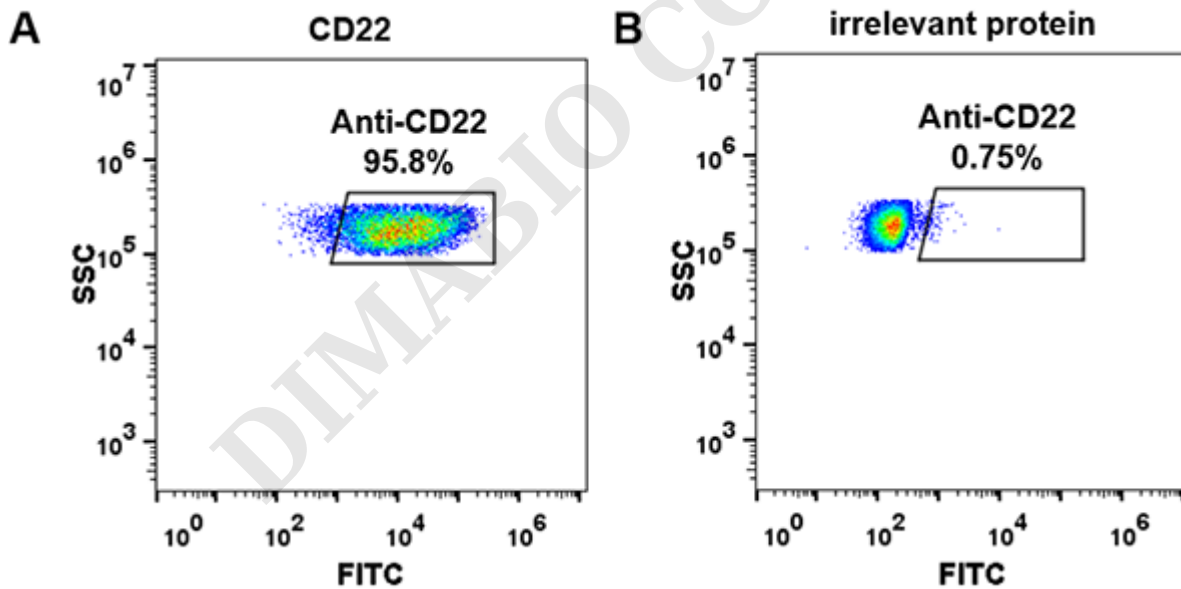


Figure 2. HEK293 cell line transfected with irrelevant protein (**B**) and human CD22 (**A**) were surface stained with Anti-CD22 mAb 1  $\mu\text{g}/\text{ml}$  (pinatuzumab) followed by Alexa 488-conjugated anti-human IgG secondary antibody.

