

**PRODUCT INFORMATION**

<b>Clone ID</b>	DMC280
<b>Target</b>	CD21
<b>Synonyms</b>	C3DR; CD21; CR; CVID7; SLEB9
<b>Host Species</b>	Rabbit
<b>Description</b>	Anti-CD21 antibody(DMC280); IgG1 Chimeric mAb
<b>Delivery</b>	In Stock
<b>Uniprot ID</b>	P20023
<b>IgG type</b>	Rabbit/Human Fc chimeric IgG1
<b>Clonality</b>	Monoclonal
<b>Reactivity</b>	Human
<b>Applications</b>	Flow Cyt; WB
<b>Recommended Dilutions</b>	Flow Cyt 1:100; WB 1:1000
<b>Purification</b>	Purified from cell culture supernatant by affinity chromatography
<b>Formulation &amp; Reconstitution</b>	Lyophilized from sterile PBS, pH 7.4. Normally 5% - 8% trehalose is added as protectants before lyophilization. Please see Certificate of Analysis for specific instructions of reconstitution.
<b>Storage &amp; Shipping</b>	Store at -20°C to -80°C for 12 months in lyophilized form. After reconstitution, if not intended for use within a month, aliquot and store at -80°C (Avoid repeated freezing and thawing). Lyophilized proteins are shipped at ambient temperature.
<b>Background</b>	This gene encodes a membrane protein; which functions as a receptor for Epstein-Barr virus (EBV) binding on B and T lymphocytes. Genetic variations in this gene are associated with susceptibility to systemic lupus erythematosus type 9 (SLEB9). Alternatively spliced transcript variants encoding different isoforms have been found for this gene.
<b>Usage</b>	Research use only
<b>Conjugate</b>	Unconjugated



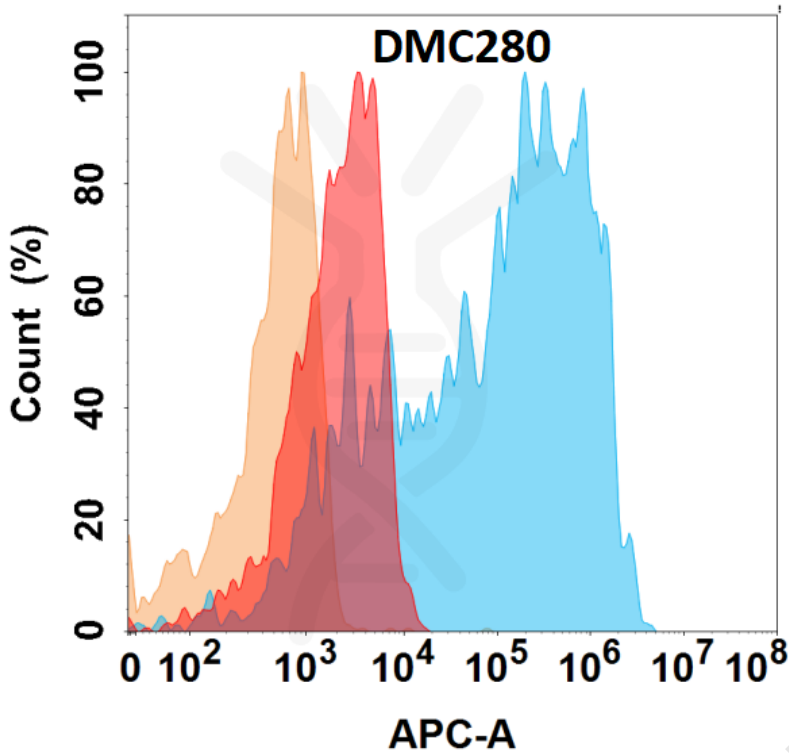


Figure 1. Flow cytometry analysis with Anti-CD21 (DMC280) on Expi293 cells transfected with human CD21 (Blue histogram) or Expi293 transfected with irrelevant protein (Red histogram), and Isotype antibody on Expi293 transfected with irrelevant protein (Orange histogram).

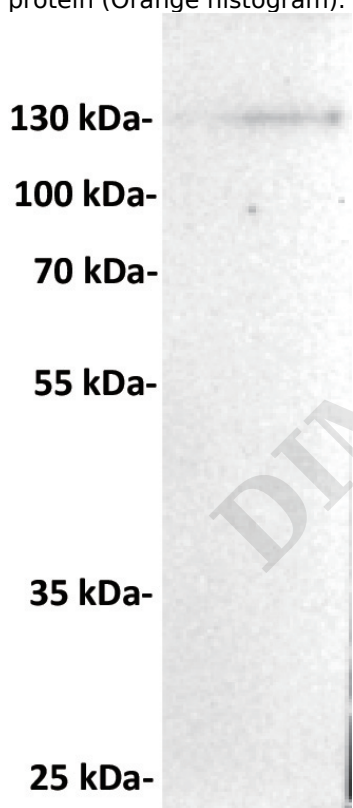


Figure 2. Anti-CD21 antibody (SKU# DMC100280) at 1/1000 dilution

Lane : RAJI, whole cell lysate

Secondary : Goat Anti-Rabbit IgG H&L (HRP) at 1/5000 dilution

Predicted band size: 113 kDa  
Observed band size: 113 kDa  
Biotechnology B7, Biolake No.666  
Gaoxin Road, Wuhan, Hubei, China  
Telephone: +1 2409940618(USA)  
/+86-18062749453(China)  
/+86-400-006-0995(China)

Email: [info@dimabio.com](mailto:info@dimabio.com)  
Website: [www.dimabio.com](http://www.dimabio.com)



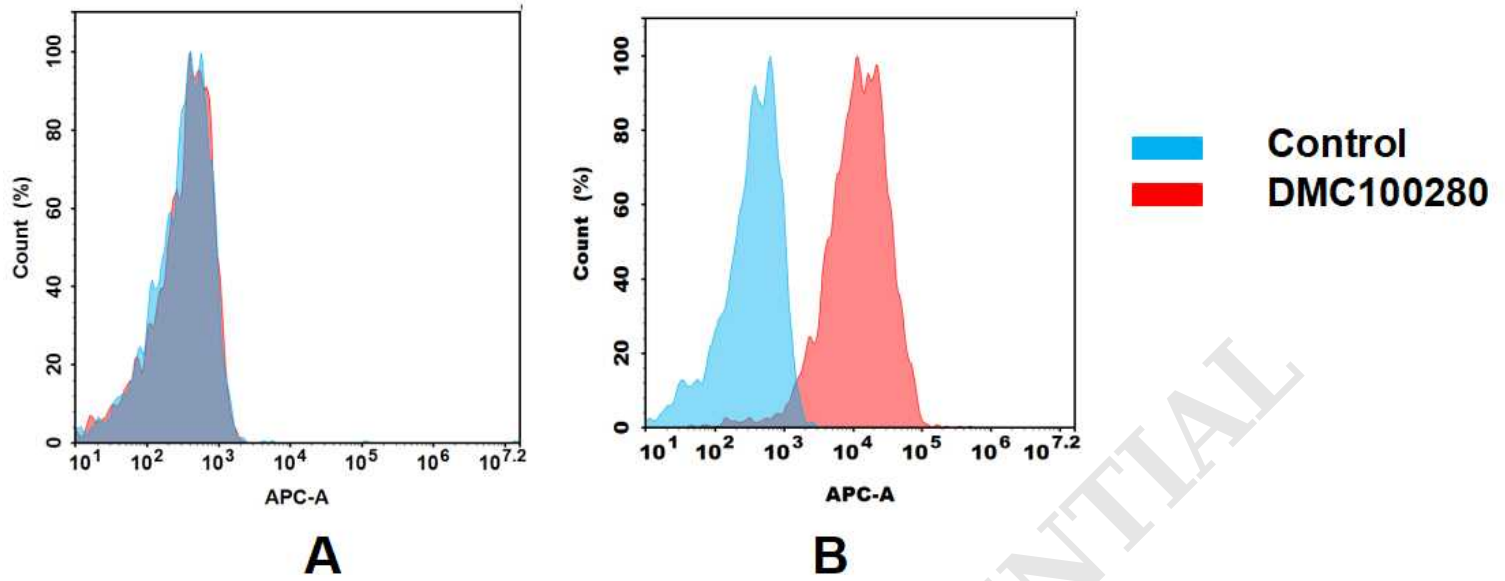


Figure 3. Flow cytometry analysis of antigen binding of anti-human CD21 mAb(DMC100280).

(A) DMC100280 does not bind to Jurkat cells that do not express CD21.

(B) A clear peak shift of DMC100280 was seen compared to the control when incubated with CD21-expressing Raji cells, indicating strong binding of DMC100280 to CD21. Antibodies were incubated at 10  $\mu$ g/mL.

DIMABIO CONFIDENTIAL

