

PRODUCT INFORMATION

Clone ID	DM156
Target	CD200
Synonyms	CD200;MOX1;MOX2;MRC;OX-2;My033
Host Species	Rabbit
Description	Anti-CD200 antibody(DM156); Rabbit mAb
Delivery	In Stock
Uniprot ID	P41217
IgG type	Rabbit IgG
Clonality	Monoclonal
Reactivity	Human
Applications	ELISA; Flow Cyt
Recommended Dilutions	ELISA 1:5000-10000; Flow Cyt 1:100
Purification	Purified from cell culture supernatant by affinity chromatography
Formulation & Reconstitution	Lyophilized from sterile PBS, pH 7.4. Normally 5 % - 8% trehalose is added as protectants before lyophilization. Please see Certificate of Analysis for specific instructions of reconstitution.
Storage & Shipping	Store at -20°C to -80°C for 12 months in lyophilized form. After reconstitution, if not intended for use within a month, aliquot and store at -80°C (Avoid repeated freezing and thawing). Lyophilized proteins are shipped at ambient temperature.
Background	This gene encodes a type I membrane glycoprotein containing two extracellular immunoglobulin domains; a transmembrane and a cytoplasmic domain. This gene is expressed by various cell types; including B cells; a subset of T cells; thymocytes; endothelial cells; and neurons. The encoded protein plays an important role in immunosuppression and regulation of anti-tumor activity. Alternative splicing results in multiple transcript variants encoding different isoforms.
Usage	Research use only
Conjugate	Unconjugated



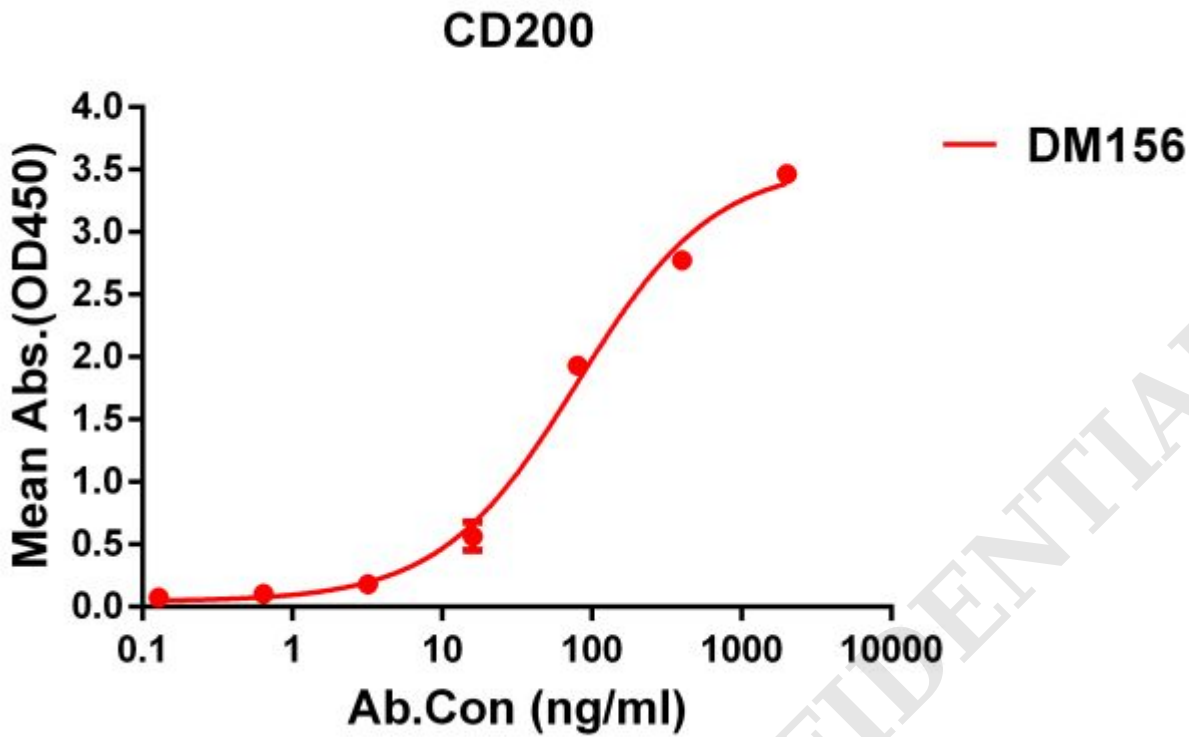


Figure 1. ELISA plate pre-coated by 1 µg/ml (100 µl/well) Human CD200 protein, His tagged protein ([getskuurl sku="PME100466"]) can bind Rabbit anti-CD200 monoclonal antibody(**clone: DM156**) in a linear range of 5-1000 ng/ml.

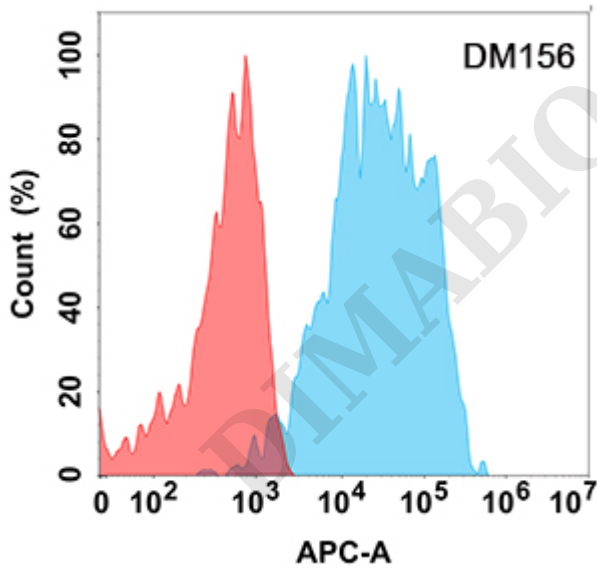


Figure 2. Flow cytometry analysis with Anti-CD200 (DM156) on Expi293 cells transfected with human CD200 (Blue histogram) or Expi293 transfected with irrelevant protein (Red histogram).

