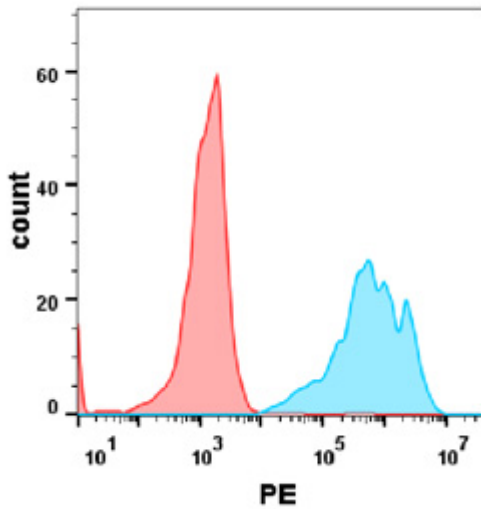


**PRODUCT INFORMATION**

<b>Common Name</b>	MEDI-551, Medi-551
<b>Synonyms</b>	CD19;4;VID3;GC12802
<b>Applications</b>	ELISA; Flow Cyt
<b>Recommended Dilutions</b>	ELISA 1:5000-10000; Flow Cyt 1:100
<b>Formulation &amp; Reconstitution</b>	Lyophilized from sterile PBS, pH 7.4. Normally 5% - 8% trehalose is added as protectants before lyophilization. Please see Certificate of Analysis for specific instructions of reconstitution.
<b>Host Species</b>	Humanized
<b>IgG type</b>	IgG1
<b>Reactivity</b>	Human
<b>Target</b>	CD19
<b>Uniprot ID</b>	P15391
<b>Description</b>	Anti-CD19 (inebilizumab biosimilar)mAb
<b>Delivery</b>	In Stock
<b>Storage &amp; Shipping</b>	Store at -20°C to -80°C for 12 months in lyophilized form. After reconstitution, if not intended for use within a month, aliquot and store at -80°C (Avoid repeated freezing and thawing). Lyophilized proteins are shipped at ambient temperature.
<b>Background</b>	Research grade biosimilar. Not for use in therapeutic or diagnostic procedures for humans or animals.
<b>Usage</b>	Research use only
<b>Conjugate</b>	Unconjugated

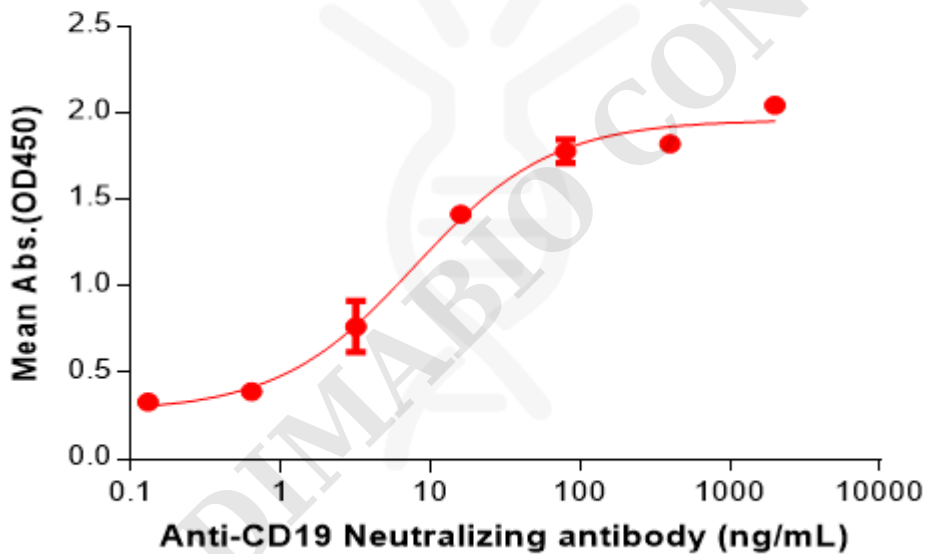




**Figure 1.** Flow cytometry analysis with Anti-CD19 mAb 1  $\mu\text{g}/\text{ml}$  (inebilizumab) on Expi293 cells transfected with human CD19 (Blue histogram) or Expi293 transfected with irrelevant protein (Red histogram).

### Anti-CD19 (inebilizumab biosimilar)mAb ELISA

0.2  $\mu\text{g}$  of Goat anti-Mouse IgG tagged protein per well



**Figure 2.** ELISA plate pre-coated by 2  $\mu\text{g}/\text{mL}$  (100  $\mu\text{L}/\text{well}$ ) Human CD19 Protein, mFc Tag (PME100781) can bind Anti-CD19 (inebilizumab biosimilar) mAb (BME100051) in a linear range of 0.64–16 ng/mL.

