

PRODUCT INFORMATION

Clone ID	DM31
Target	CD123
Synonyms	IL3R; IL3RA; IL-3Ra; IL-3R-alpha; IL3RAY; IL3RX; IL3RY; CD123 antigen; CD123; hIL3Ra; hIL-3Ra; MGC34174; IL-3 R alpha
Host Species	Rabbit
Description	Anti-CD123 antibody(DM31); Rabbit mAb
Delivery	In Stock
Uniprot ID	P26951
IgG type	Rabbit IgG
Clonality	Monoclonal
Reactivity	Human
Applications	ELISA; Flow Cyt
Recommended Dilutions	ELISA 1:5000-10000; Flow Cyt 1:100
Purification	Purified from cell culture supernatant by affinity chromatography
Formulation & Reconstitution	Lyophilized from sterile PBS, pH 7.4. Normally 5 % - 8% trehalose is added as protectants before lyophilization. Please see Certificate of Analysis for specific instructions of reconstitution.
Storage & Shipping	Store at -20°C to -80°C for 12 months in lyophilized form. After reconstitution, if not intended for use within a month, aliquot and store at -80°C (Avoid repeated freezing and thawing). Lyophilized proteins are shipped at ambient temperature.
Background	Interleukin 3 receptor alpha (low affinity) (IL3RA); also known as CD123 (Cluster of Differentiation 123) is a 70-kD glycoprotein member of the hematopoietin receptor superfamily. This protein associates with a beta subunit common to the receptors for IL-5 and granulocyte-macrophage colony-stimulating factor (GM-CSF) to form a high-affinity receptor for IL-3. The interleukin-3 receptor a chain (CD123) has been identified as a potential immunotherapeutic target because it is overexpressed in AML compared with normal hematopoietic stem cells.
Usage	Research use only
Conjugate	Unconjugated



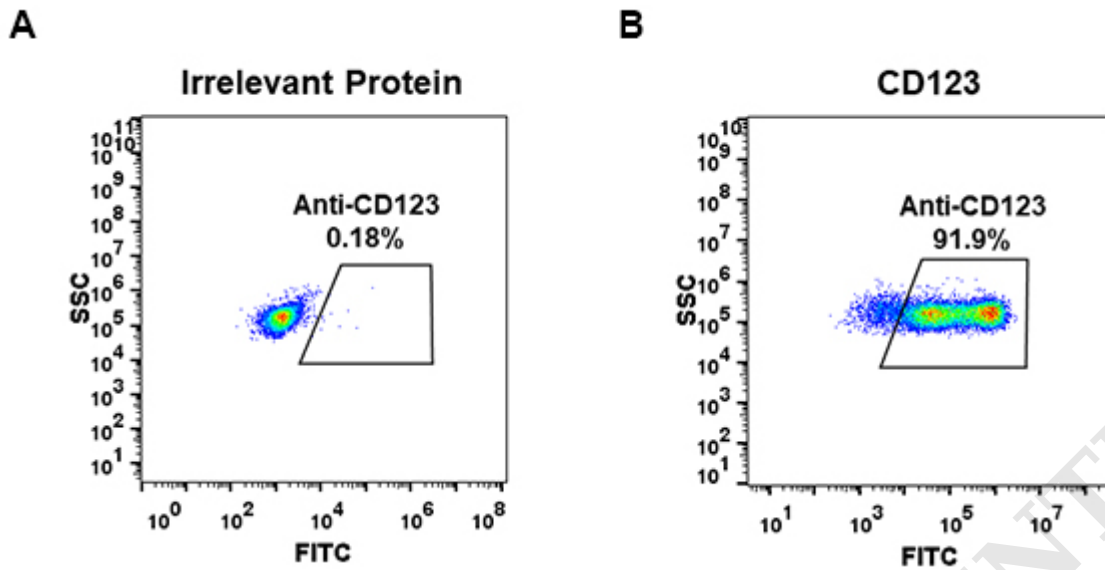


Figure 1. Expi 293 cell line transfected with irrelevant protein (left) and human CD123(right) were surface stained with Rabbit anti-CD123 monoclonal antibody $1\mu\text{g/ml}$ (clone: DM31) followed by Alexa 488-conjugated anti-rabbit IgG secondary antibody.

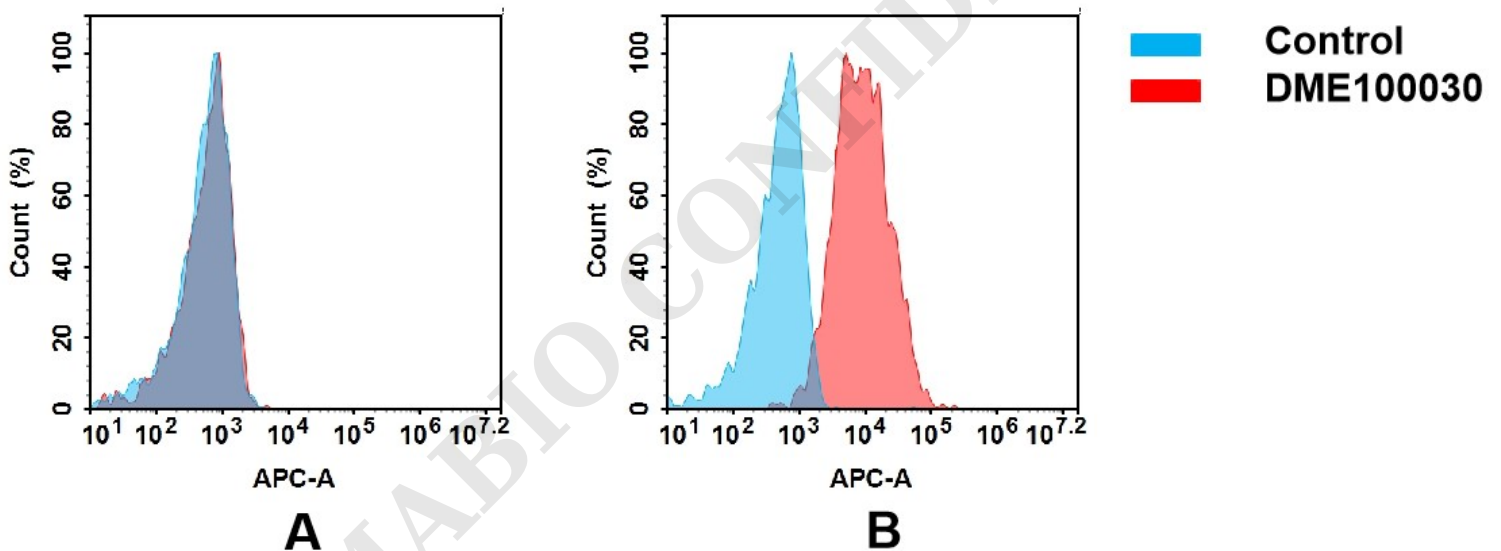


Figure 2. Flow cytometry analysis of antigen binding of rabbit anti-human CD123 mAb(DME100030).

(A) DME100030 does not bind to CHO-S cells that do not express CD123.

(B) A clear peak shift of DME100030 was seen compared to the control when incubated with CD123-expressing THP-1 cells, indicating strong binding of DME100030 to CD123. Antibodies were incubated at $5\mu\text{g/mL}$.

