

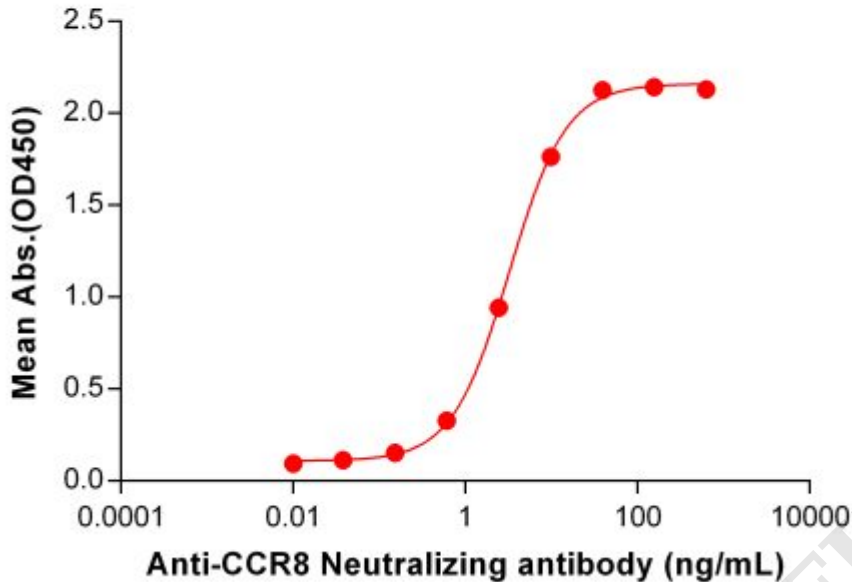
**PRODUCT INFORMATION**

<b>Common Name</b>	4A19, BMS-986340
<b>Conjugate</b>	Unconjugated
<b>Synonyms</b>	CC-CKR-8;CCR-8;CDw198;CKRL1;CMKBR8;CMKBRL2;CY6;GPRCY6;TER1
<b>Applications</b>	ELISA; Flow Cyt
<b>Recommended Dilutions</b>	ELISA 1:5000-10000; Flow Cyt 1:100
<b>Formulation &amp; Reconstitution</b>	Lyophilized from sterile PBS, pH 7.4. Normally 5 % - 8% trehalose is added as protectants before lyophilization. Please see Certificate of Analysis for specific instructions of reconstitution.
<b>Host Species</b>	Humanized
<b>IgG type</b>	IgG1
<b>Reactivity</b>	Human
<b>Target</b>	CCR8
<b>Uniprot ID</b>	P51685
<b>Description</b>	Anti-CCR8(BMS 986340) mAb
<b>Delivery</b>	In Stock
<b>Storage &amp; Shipping</b>	Store at -20°C to -80°C for 12 months in lyophilized form. After reconstitution, if not intended for use within a month, aliquot and store at -80°C (Avoid repeated freezing and thawing). Lyophilized proteins are shipped at ambient temperature.
<b>Background</b>	Research grade biosimilar. Not for use in therapeutic or diagnostic procedures for humans or animals.
<b>Usage</b>	Research use only
<b>DIMA Disclaimer</b>	All DIMA recombinant antibodies are genuinely generated by DIMA Biotech. They are all under patent application. Any protein sequencing or reverse engineering attempt is prohibited. We are actively scrutinizing all patent application to ensure no IP infringement.

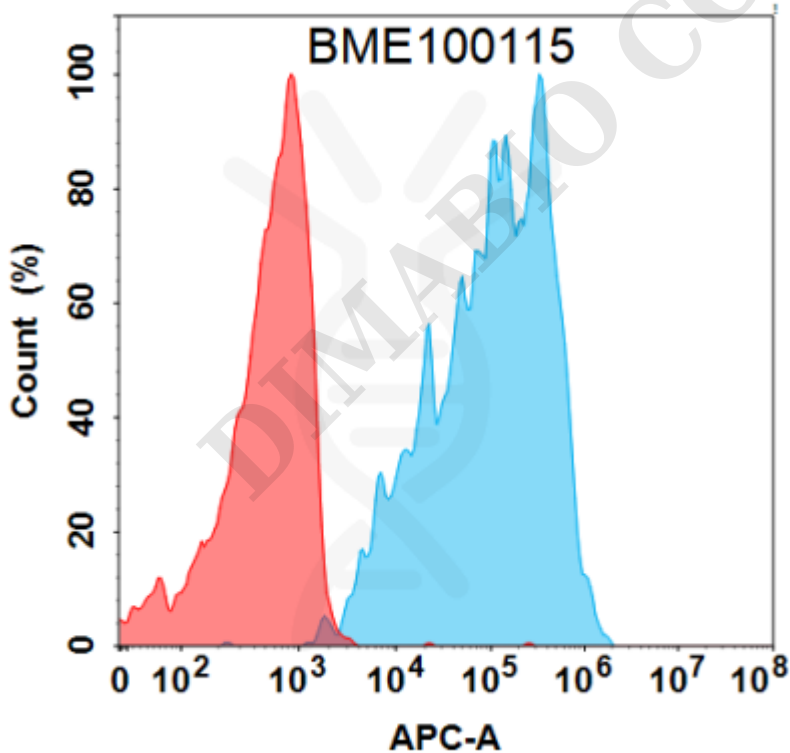


### Anti-CCR8 (BMS 986340) mAb ELISA

0.2  $\mu$ g of Human CCR8, mFc tagged protein per well



**Figure 1.** ELISA plate pre-coated by 2  $\mu$ g/mL (100  $\mu$ L/well) Human CCR8 Protein, mFc Tag ([getskuurl sku="PME101103"]) can bind Anti-CCR8 Neutralizing antibody (BME100115) in a linear range of 0.15-39.06 ng/mL.



**Figure 2.** Flow cytometry analysis with 1  $\mu$ g/mL Anti-CCR8 (BMS 986340) mAb (BME100115) on Expi293 cells transfected with Human CCR8 protein (Blue histogram) or Expi293 transfected with irrelevant protein (Red histogram).

