

**PRODUCT INFORMATION**

<b>Common Name</b>	Shionogi Inc.(10A11)
<b>Synonyms</b>	CC-CKR-8;CCR-8;CDw198;CKRL1;CMKBR8;CMKBRL2;CY6;GPCRY6;TER1
<b>Applications</b>	ELISA, Flow Cyt
<b>Recommended Dilutions</b>	ELISA 1:5000-10000, Flow Cyt 1:100
<b>Formulation &amp; Reconstitution</b>	Lyophilized from sterile PBS, pH 7.4. Normally 5 % - 8% trehalose is added as protectants before lyophilization. Please see Certificate of Analysis for specific instructions.
<b>Host Species</b>	Humanized
<b>IgG type</b>	IgG1
<b>Reactivity</b>	Human
<b>Target</b>	CCR8
<b>Uniprot ID</b>	P51685
<b>Description</b>	Anti-CCR8(10A11) mAb
<b>Delivery</b>	In Stock
<b>Storage &amp; Shipping</b>	Store at -20°C to -80°C for 12 months in lyophilized form. After reconstitution, if not intended for use within a month, aliquot and store at -80°C (Avoid repeated freezing and thawing). Lyophilized proteins are shipped at ambient temperature.
<b>Background</b>	Research grade biosimilar. Not for use in therapeutic or diagnostic procedures for humans or animals.
<b>Usage</b>	Research use only. All DIMA recombinant antibodies are genuinely generated by DIMA Biotech. They are all under patent application. Any protein sequencing or reverse engineering attempt is prohibited. We are actively scrutinizing all patent application to ensure no IP infringement.
<b>Conjugate</b>	Unconjugated



## Human CCR8, hFc Tagged protein ELISA

0.1  $\mu$ g Human CCR8, hFc Tagged protein per well

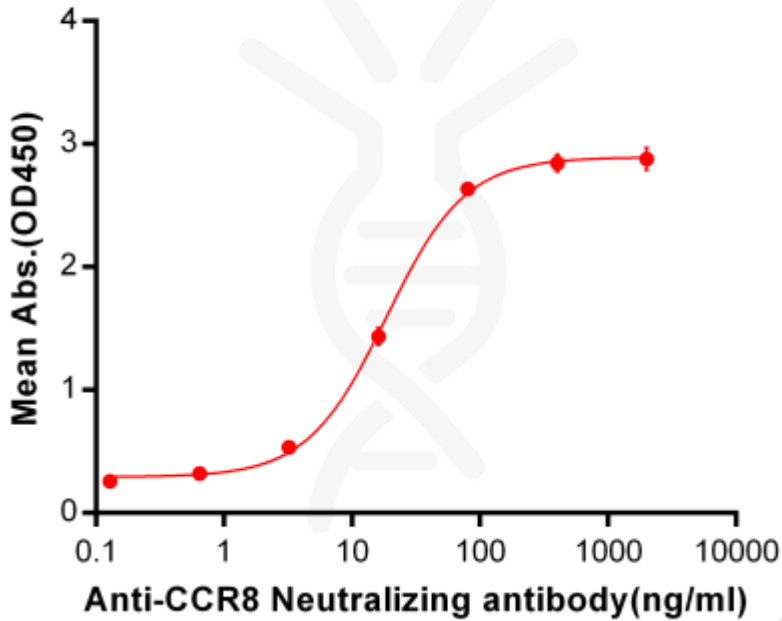


Figure 1. ELISA plate pre-coated by 1 $\mu$ g/ml (100 $\mu$ L/well) Human CCR8, hFc Tag (PME101091) can bind Anti-CCR8 Neutralizing antibody BME100063 in a linear range of 3.2-80 ng/ml. In order to specifically detect BME100063, mouse anti-human Fab-specific antibody was used as detection antibody.

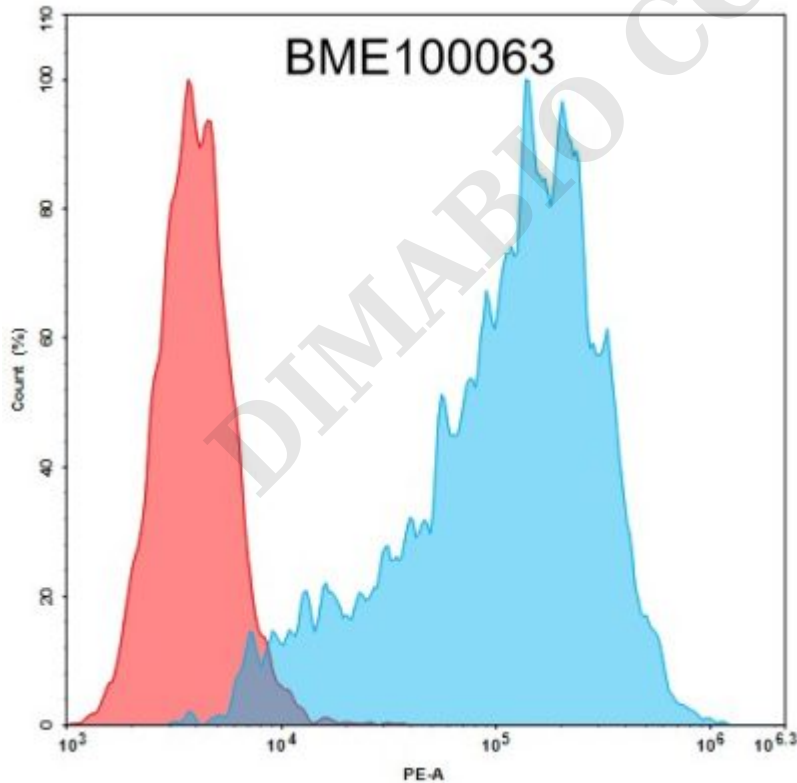


Figure 2. Flow cytometry analysis with 1  $\mu$ g/ml Anti-CCR8 neutralizing antibody on 293T-CCR8 (293T cells transduced with gene for full length CCR8) Human Cell Line (Red histogram) or 293T Cell Line (Blue histogram).

