

PRODUCT INFORMATION

| | |
|---|---|
| Uniprot ID | NP_001301026.1 |
| Common Name | 4F12 |
| Synonyms | PD1, PDCD1, CD279, SLEB2, hPD-1, hPD-I, hSLE1 |
| Applications | ELISA, Flow Cyt |
| Recommended Dilutions | ELISA 1:5000-10000, Flow Cyt 1:100 |
| Formulation & Reconstitution | Lyophilized from sterile PBS, pH 7.4. Normally 5% - 8% trehalose is added as protectants before lyophilization. Please see Certificate of Analysis for specific instructions of reconstitution. |
| Host Species | Chimeric Rabbit |
| IgG type | IgG |
| Reactivity | Canine |
| Target | PD-1 |
| Description | Anti-Canine PD-1(INTERVET 4F12) mAb |
| Delivery | In Stock |
| Storage & Shipping | Store at -20°C to -80°C for 12 months in lyophilized form. After reconstitution, if not intended for use within a month, aliquot and store at -80°C (Avoid repeated freezing and thawing). Lyophilized antibodies are shipped at ambient temperature. |
| Background | Research grade biosimilar. Not for use in therapeutic or diagnostic procedures for humans or animals. |
| Usage | Research use only |



Anti-Canine PD-1(INTERVET 4F12) mAb ELISA

0.2 μ g of Canine PD-1, His tagged protein per well

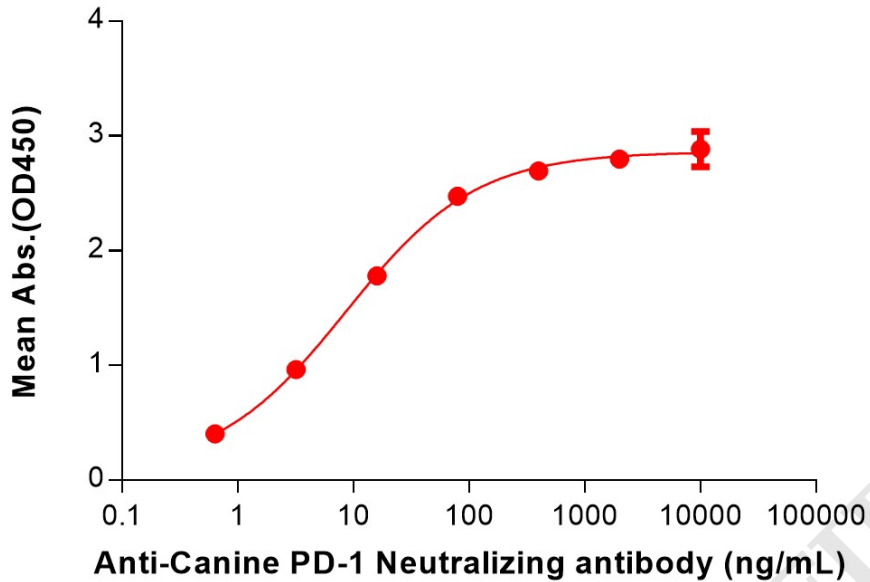


Figure 1. ELISA plate pre-coated by 2 μ g/mL (100 μ L/well) Canine PD-1 Protein, His Tag (PME-D100005) can bind Anti-Canine PD-1(INTERVET 4F12) mAb (BME100202) in a linear range of 0.64-80 ng/mL.

Anti-Canine PD-1(INTERVET 4F12) mAb ELISA

0.2 μ g of Canine PD-1, hFc tagged protein per well

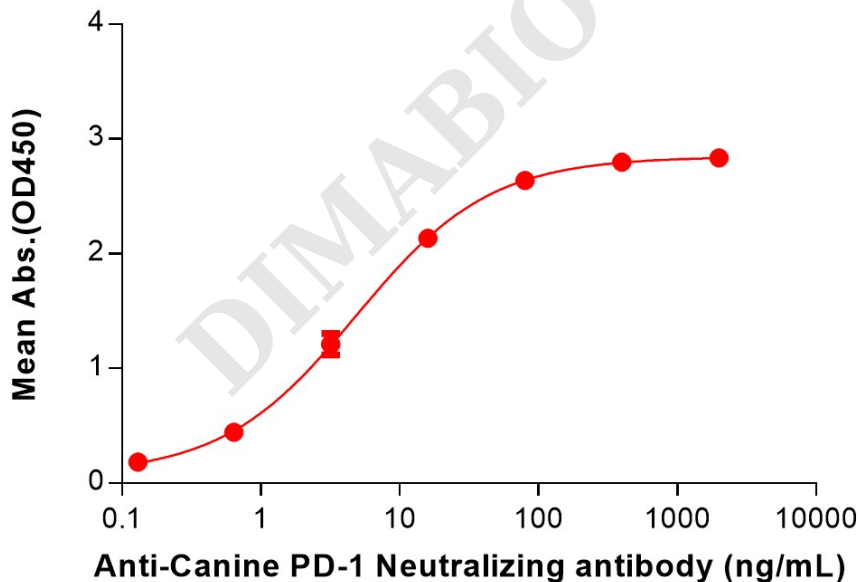


Figure 2. ELISA plate pre-coated by 2 μ g/mL (100 μ L/well) Canine PD-1 Protein, hFc Tag (PME-D100008) can bind Anti-Canine PD-1(INTERVET 4F12) mAb (BME100202) in a linear range of 0.64-80 ng/mL.



Anti-Canine PD-1(INTERVET 4F12) mAb ELISA

0.2 μ g of Canine PD-1, mFc tagged protein per well

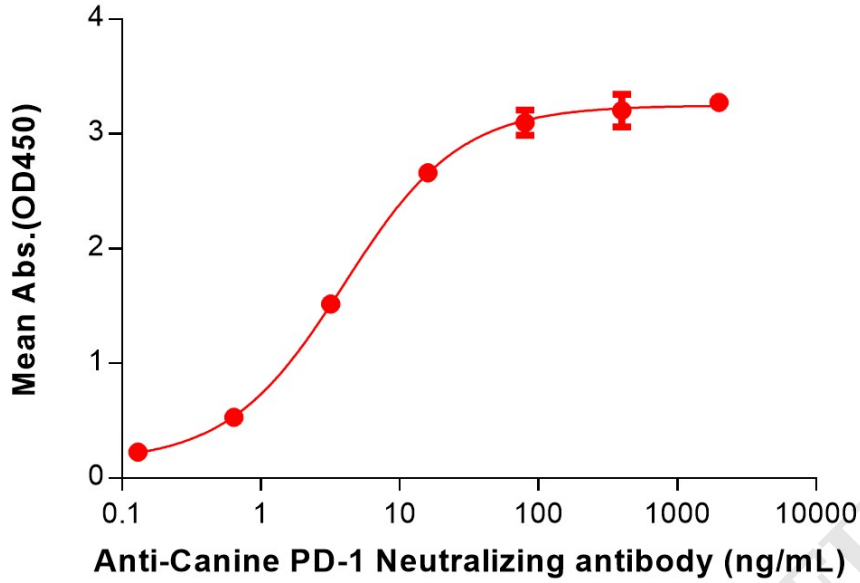


Figure 3. ELISA plate pre-coated by 2 μ g/mL (100 μ L/well) Canine PD-1 Protein, mFc Tag (PME-D100006) can bind Anti-Canine PD-1(INTERVET 4F12) mAb (BME100202) in a linear range of 0.64–80 ng/mL.

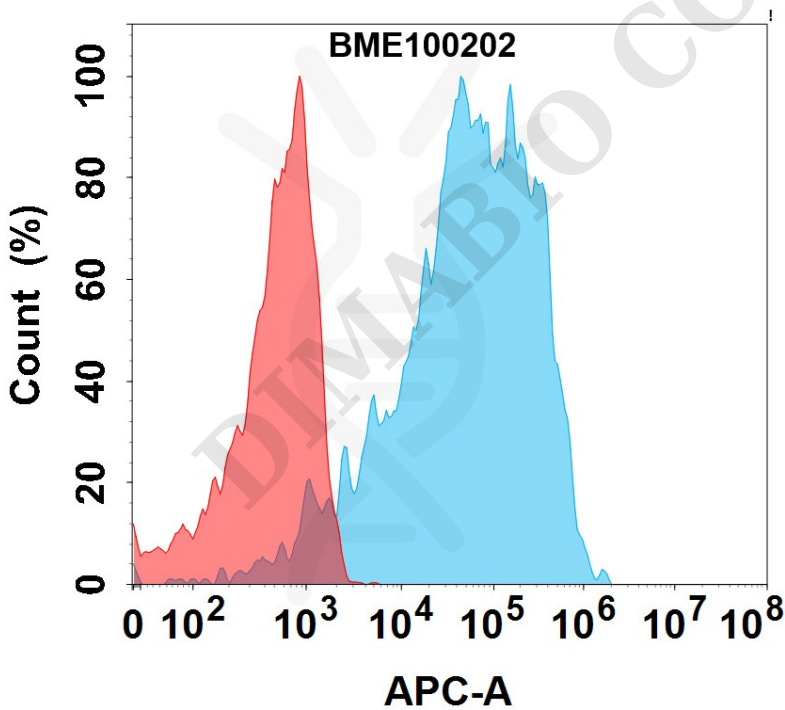


Figure 4. Flow cytometry analysis with 1 μ g/mL Anti-Canine PD-1(INTERVET 4F12) mAb (BME100202) on Expi293 cells transfected with Canine PD-1 protein (Blue histogram) or Expi293 transfected with irrelevant protein (Red histogram).

