

PRODUCT INFORMATION

Clone ID	DM153
Target	B7-H6
Synonyms	B7-H6;NCR3LG1;B7 Homolog 6
Host Species	Rabbit
Description	Anti-B7-H6 antibody(DM153); Rabbit mAb
Delivery	In Stock
Uniprot ID	Q68D85
IgG type	Rabbit IgG
Clonality	Monoclonal
Reactivity	Human
Applications	ELISA; Flow Cyt
Recommended Dilutions	ELISA 1:5000-10000; Flow Cyt 1:100
Purification	Purified from cell culture supernatant by affinity chromatography
Formulation & Reconstitution	Lyophilized from sterile PBS, pH 7.4. Normally 5% - 8% trehalose is added as protectants before lyophilization. Please see Certificate of Analysis for specific instructions of reconstitution. Store at -20°C to -80°C for 12 months in lyophilized form. After reconstitution, if not intended for use within a month, aliquot and store at -80°C (Avoid repeated freezing and thawing). Lyophilized proteins are shipped at ambient temperature.
Storage & Shipping	
Background	B7-H6 belongs to the B7 family (see MIM 605402) and is selectively expressed on tumor cells. Interaction of B7H6 with NKp30 (NCR3; MIM 611550) results in natural killer (NK) cell activation and cytotoxicity.
Usage	Research use only



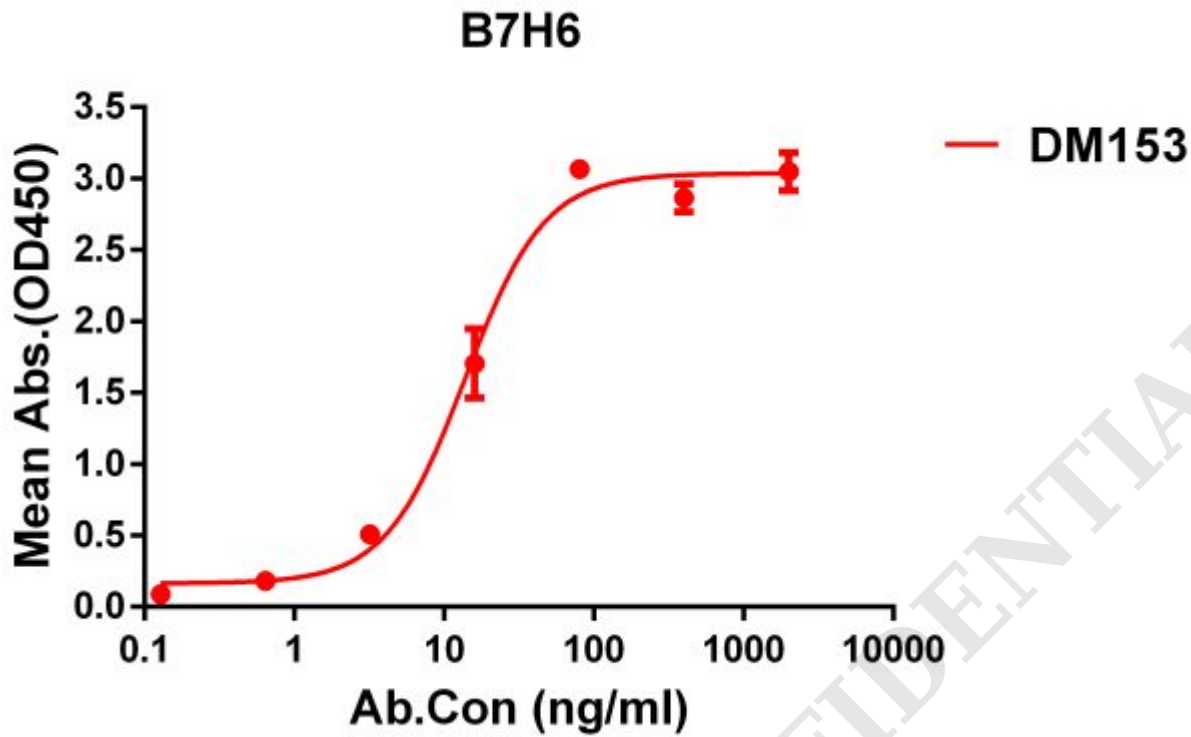


Figure 1. ELISA plate pre-coated by 1 µg/ml (100 µl/well) Human B7H6 protein, His tagged protein ([getskuurl sku="PME100510"]) can bind Rabbit anti-B7H6 monoclonal antibody(clone: **DM153**) in a linear range of 5-100 ng/ml.

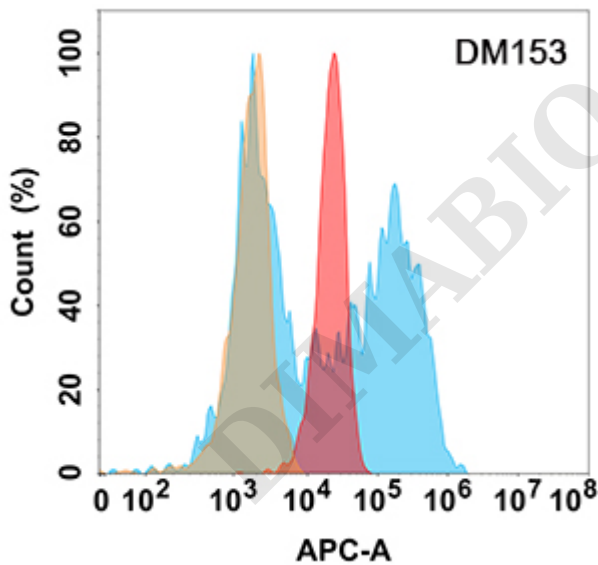


Figure 2. B7H6 protein is highly expressed on the surface of Expi293 cell membrane. Flow cytometry analysis with Anti-B7H6 (DM153) on Expi293 cells transfected with human B7H6 (Blue histogram) or Expi293 transfected with irrelevant protein (Red histogram), and Isotype antibody on Expi293 transfected with irrelevant protein (Orange histogram).

