

PRODUCT INFORMATION

Common Name	HuMax-AXL-ADC
Synonyms	AXL;UFO
Applications	ELISA; Flow Cyt
Recommended Dilutions	ELISA 1:5000-10000; Flow Cyt 1:100
Formulation & Reconstitution	Lyophilized from sterile PBS, pH 7.4. Normally 5% - 8% trehalose is added as protectants before lyophilization. Please see Certificate of Analysis for specific instructions of reconstitution.
Host Species	Homo sapiens
IgG type	IgG1
Reactivity	Human
Target	AXL
Uniprot ID	P30530
Description	Anti-AXL (enapotamab biosimilar) mAb
Delivery	In Stock
Storage & Shipping	Store at -20°C to -80°C for 12 months in lyophilized form. After reconstitution, if not intended for use within a month, aliquot and store at -80°C (Avoid repeated freezing and thawing). Lyophilized proteins are shipped at ambient temperature.
Background	Research grade biosimilar. Not for use in therapeutic or diagnostic procedures for humans or animals.
Usage	Research use only

CONFIDENTIAL



Anti-AXL (enapotamab biosimilar) mAb ELISA

0.2 μ g of Human AXL, His tagged protein per well

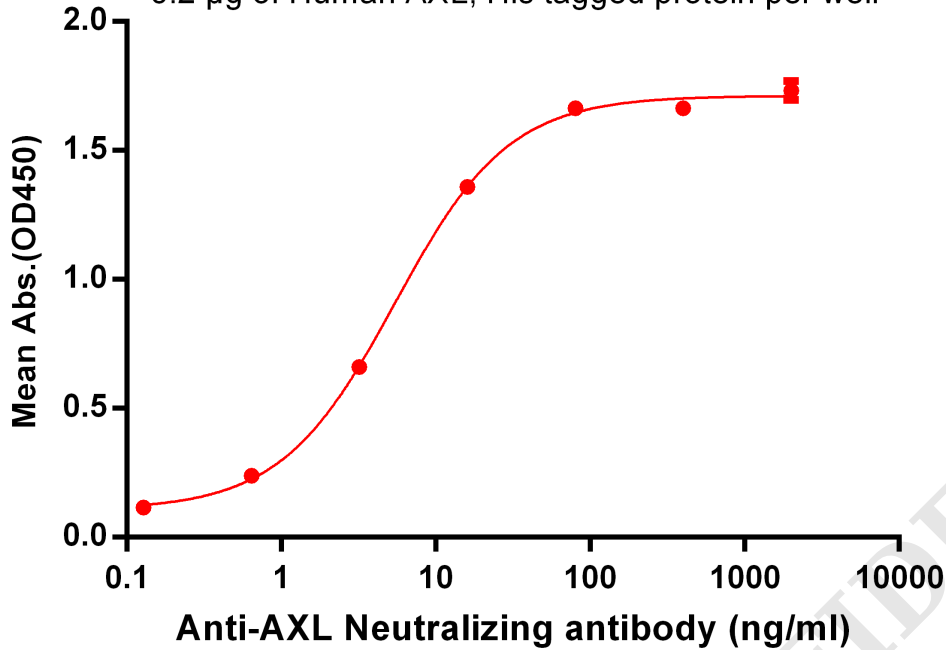


Figure 1. ELISA plate pre-coated by 2 μ g/ml (100 μ l/well) Human AXL, His tagged protein PME100070 can bind Anti-AXL Neutralizing antibody in a linear range of 0.64-80 ng/ml.

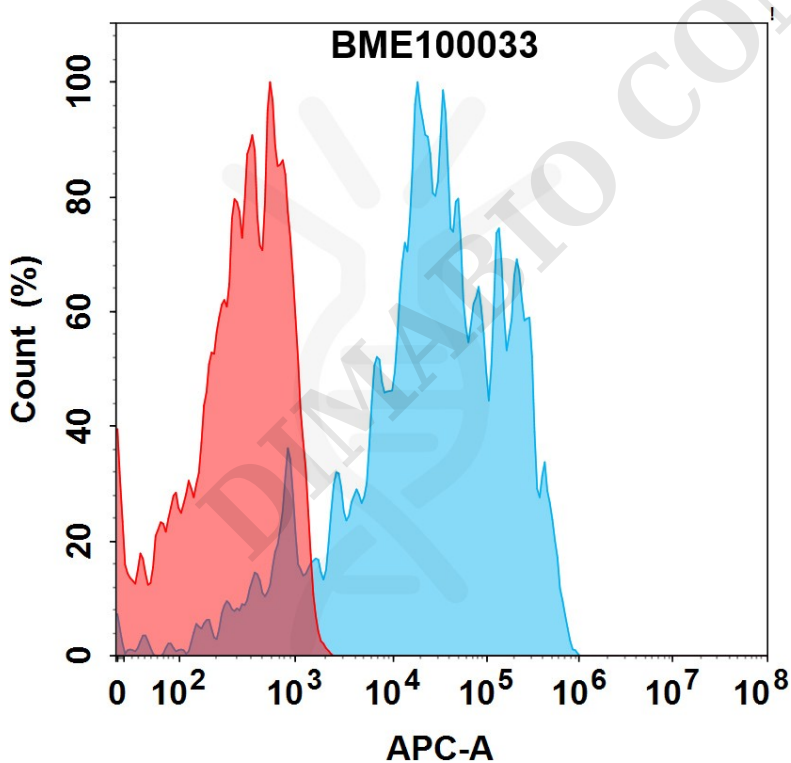


Figure 2. Flow cytometry analysis with 1 μ g/mL Anti-AXL(enapotamab biosimilar) mAb (BME100033) on Expi293 cells transfected with Human AXL protein (Blue histogram) or Expi293 transfected with irrelevant protein (Red histogram).



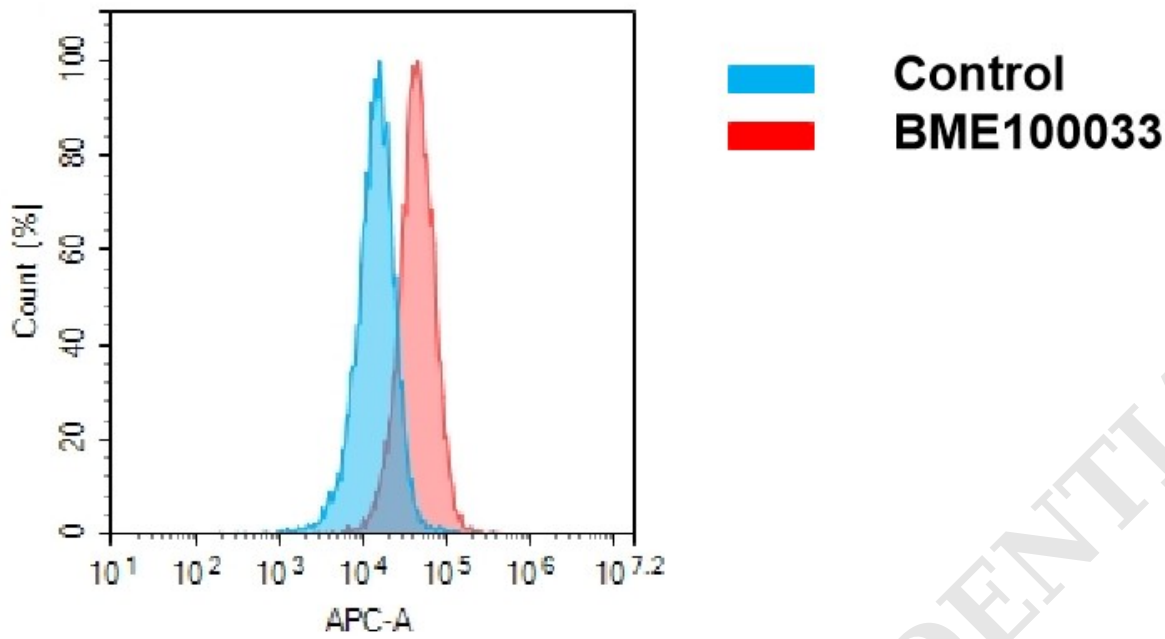
**A**

Figure 3. Flow cytometry analysis of antigen binding of anti-human AXL mAb(BME100033). (A) A clear peak shift of BME100033 was seen compared to the control when incubated with AXL-expressing Hela cells, indicating strong binding of BME100033 to AXL. Antibodies were incubated at 2 μ g/mL.

DIMABIO CONFIDENTIAL

