

**PRODUCT INFORMATION**

<b>Clone ID</b>	1F2
<b>Target</b>	AXL
<b>Synonyms</b>	AXL;UFO
<b>Host Species</b>	Rabbit
<b>Description</b>	Anti-AXL antibody(1F2), IgG1 Chimeric mAb
<b>Delivery</b>	In Stock
<b>Uniprot ID</b>	P30530
<b>IgG type</b>	Rabbit/Human Fc chimeric IgG1
<b>Clonality</b>	Monoclonal
<b>Reactivity</b>	Human
<b>Applications</b>	WB
<b>Recommended Dilutions</b>	WB 1/1000
<b>Purification</b>	Purified from cell culture supernatant by affinity chromatography
<b>Formulation &amp; Reconstitution</b>	Lyophilized from sterile PBS, pH 7.4. Normally 5 % - 8% trehalose is added as protectants before lyophilization. Please see Certificate of Analysis for specific instructions of reconstitution.
<b>Storage &amp; Shipping</b>	Store at -20°C to -80°C for 12 months in lyophilized form. After reconstitution, if not intended for use within a month, aliquot and store at -80°C (Avoid repeated freezing and thawing). Lyophilized proteins are shipped at ambient temperature.
<b>Background</b>	The protein encoded by this gene is a member of the Tyro3-Axl-Mer (TAM) receptor tyrosine kinase subfamily. The encoded protein possesses an extracellular domain which is composed of two immunoglobulin-like motifs at the N-terminal, followed by two fibronectin type-III motifs. It transduces signals from the extracellular matrix into the cytoplasm by binding to the vitamin K-dependent protein growth arrest-specific 6 (Gas6). This gene may be involved in several cellular functions including growth, migration, aggregation and anti-inflammation in multiple cell types. Alternative splicing results in multiple transcript variants of this gene.
<b>Usage</b>	Research use only
<b>Conjugate</b>	Unconjugated



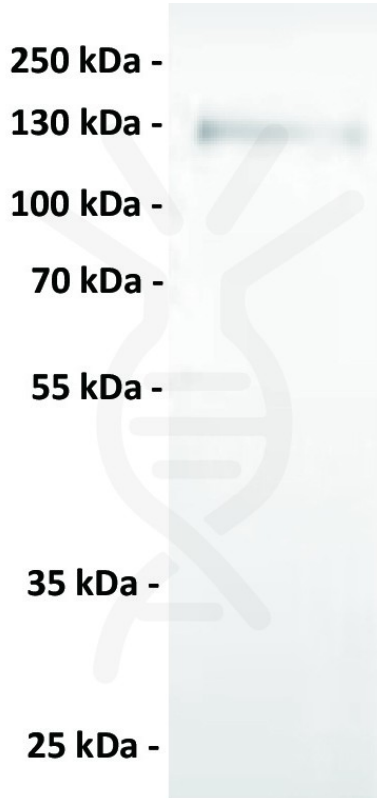


Figure 1. Anti-AXL antibody (SKU# DMC100868) at 1/1000 dilution

Lane : HeLa, whole cell lysate

Secondary : Goat Anti-Rabbit IgG H&L (HRP) at 1/5000 dilution

Predicted band size: 98 kDa  
Observed band size: 128 kDa

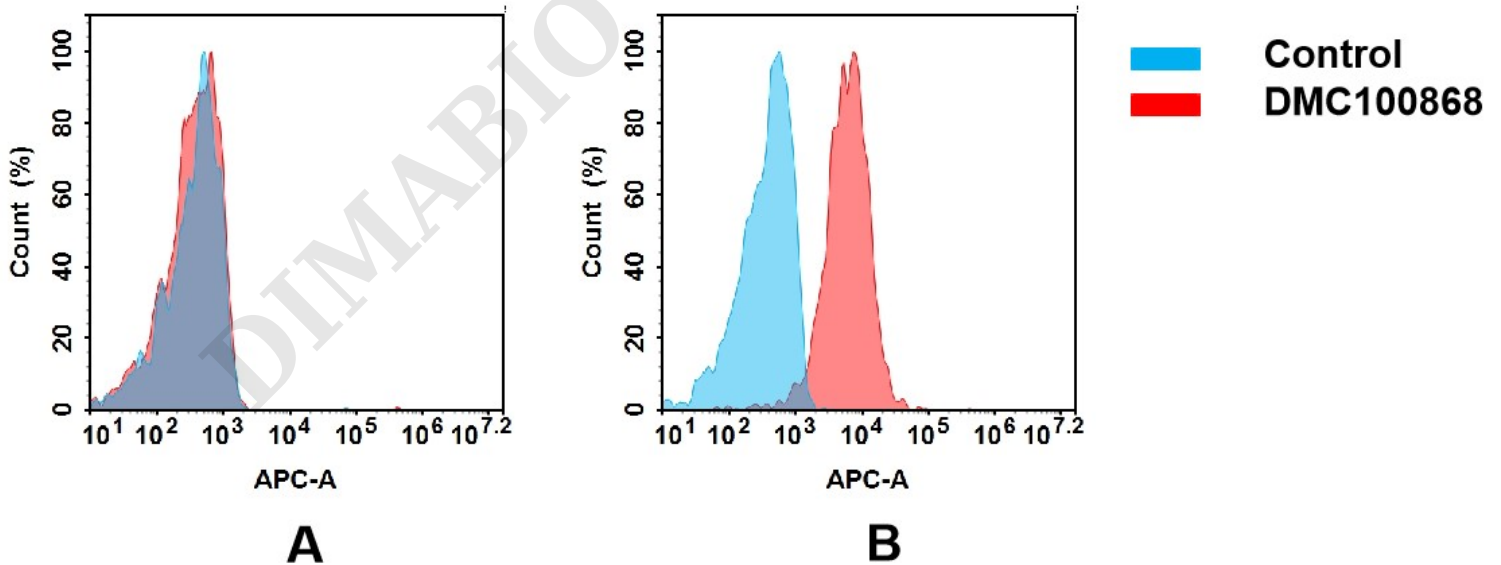


Figure 2. Flow cytometry analysis of antigen binding of anti-human AXL mAb(DMC100868).

(A) DMC100868 does not bind to CHO-S cells that do not express AXL.

(B) A clear peak shift of DMC100868 was seen compared to the control when incubated with AXL-expressing HeLa cells, indicating strong binding of DMC100868 to AXL. Antibodies were incubated at 5  $\mu$ g/mL.

