

PRODUCT INFORMATION

Common Name	A06
Conjugate	Unconjugated
Synonyms	PLAP-1;PLAP
Applications	ELISA, Flow Cyt
Recommended Dilutions	ELISA 1:5000-10000, Flow Cyt 1:100
Formulation & Reconstitution	Lyophilized from sterile PBS, pH 7.4. Normally 5% - 8% trehalose is added as protectants before lyophilization. Please see Certificate of Analysis for specific instructions.
Host Species	Humanized
IgG type	IgG1
Reactivity	Human
Target	ALPP
Uniprot ID	P05187
Description	Anti-ALPP(TCRCure A06 Biosimilar) mAb
Delivery	In Stock
Storage & Shipping	Store at -20°C to -80°C for 12 months in lyophilized form. After reconstitution, if not intended for use within a month, aliquot and store at -80°C (Avoid repeated freezing and thawing). Lyophilized proteins are shipped at ambient temperature.
Background	Research grade biosimilar. Not for use in therapeutic or diagnostic procedures for humans or animals.
Usage	Research use only
DIMA Disclaimer	All DIMA recombinant antibodies are genuinely generated by DIMA Biotech. They are all under patent application. Any protein sequencing or reverse engineering attempt is prohibited. We are actively scrutinizing all patent application to ensure no IP infringement.



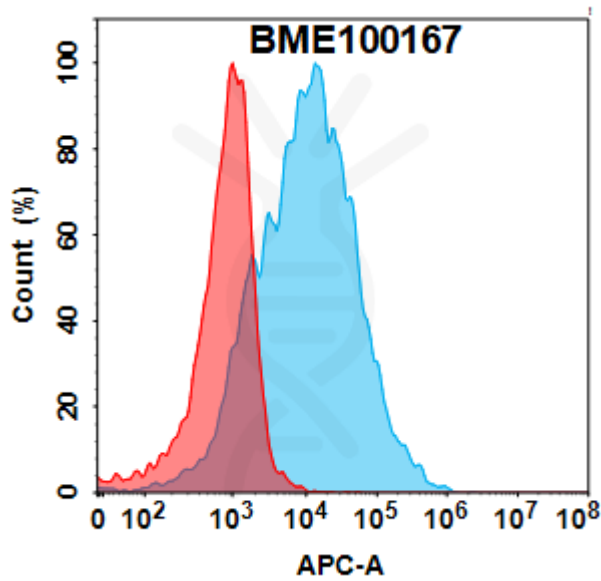


Figure 1. Flow cytometry analysis with 1 μ g/mL Anti-ALPP(TCRCure A06 Biosimilar) mAb (BME100167) on Expi293 cells transfected with Human ALPP protein (Blue histogram) or Expi293 transfected with irrelevant protein (Red histogram).

Anti-ALPP(TCRCure A06 Biosimilar)mAb ELISA

0.2 μ g of Human ALPP, His tagged protein per well

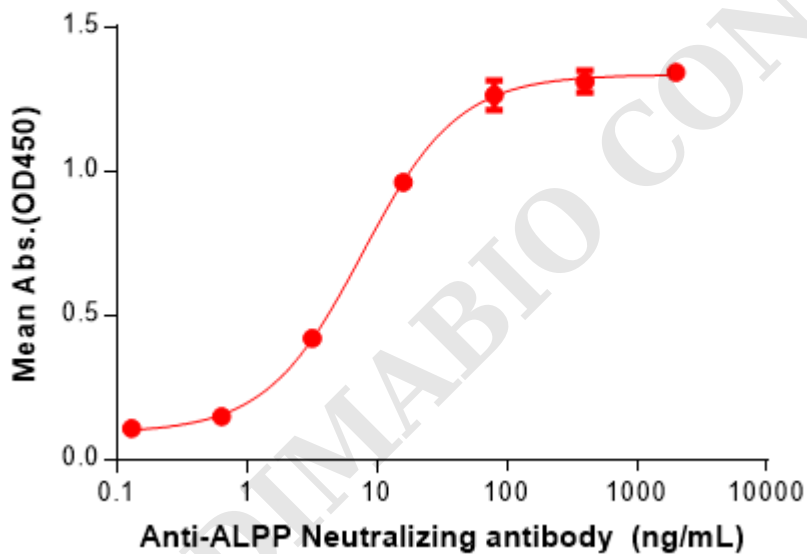


Figure 2. ELISA plate pre-coated by 2 μ g/mL (100 μ L/well) Human ALPP Protein, His Tag (PME101242) can bind Anti-ALPP(TCRCure A06 Biosimilar) mAb (BME100167) in a linear range of 3.20-80 ng/mL.

