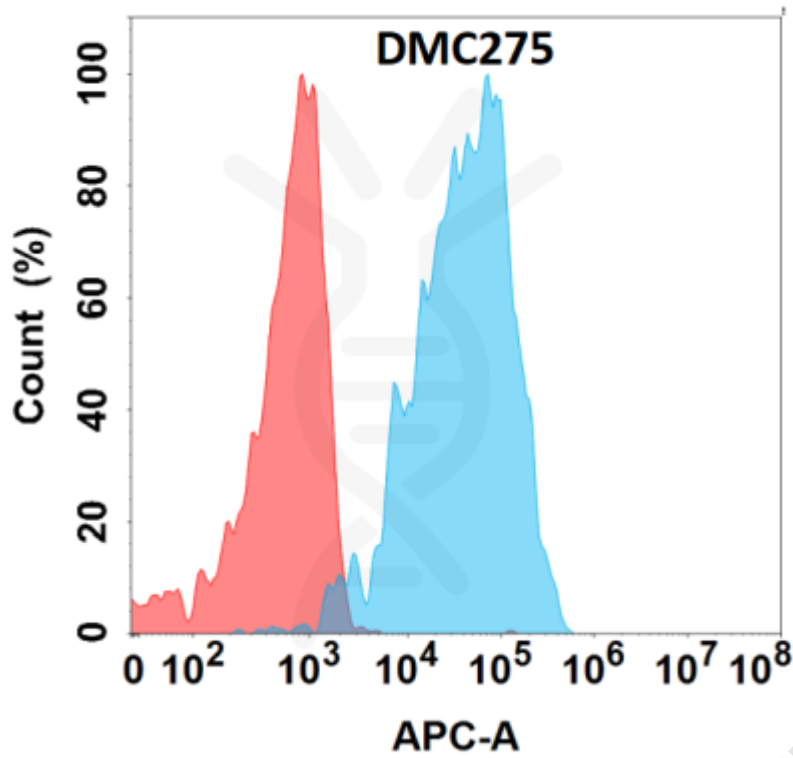


**PRODUCT INFORMATION**

<b>Clone ID</b>	DMC275
<b>Target</b>	ALB
<b>Synonyms</b>	HSA; PRO0883; PRO0903; PRO1341
<b>Host Species</b>	Rabbit
<b>Description</b>	Anti-ALB antibody(DMC275); IgG1 Chimeric mAb
<b>Delivery</b>	In Stock
<b>Uniprot ID</b>	P02768
<b>IgG type</b>	Rabbit/Human Fc chimeric IgG1
<b>Clonality</b>	Monoclonal
<b>Reactivity</b>	Human
<b>Applications</b>	Flow Cyt
<b>Recommended Dilutions</b>	Flow Cyt 1:100
<b>Purification</b>	Purified from cell culture supernatant by affinity chromatography
<b>Formulation &amp; Reconstitution</b>	Lyophilized from sterile PBS, pH 7.4. Normally 5 % - 8% trehalose is added as protectants before lyophilization. Please see Certificate of Analysis for specific instructions of reconstitution. Store at -20°C to -80°C for 12 months in lyophilized form. After reconstitution, if not intended for use within a month, aliquot and store at -80°C (Avoid repeated freezing and thawing). Lyophilized proteins are shipped at ambient temperature.
<b>Storage &amp; Shipping</b>	
<b>Background</b>	This gene encodes the most abundant protein in human blood. This protein functions in the regulation of blood plasma colloid osmotic pressure and acts as a carrier protein for a wide range of endogenous molecules including hormones; fatty acids; and metabolites; as well as exogenous drugs. Additionally; this protein exhibits an esterase-like activity with broad substrate specificity. The encoded preproprotein is proteolytically processed to generate the mature protein. A peptide derived from this protein; EPI-X4; is an endogenous inhibitor of the CXCR4 chemokine receptor.
<b>Usage</b>	Research use only





**Figure 1.** Flow cytometry analysis with Anti-ALB (DMC275) on Expi293 cells transfected with human ALB (Blue histogram) or Expi293 transfected with irrelevant protein (Red histogram).

