

**PRODUCT INFORMATION**

<b>Clone ID</b>	DMC481
<b>Target</b>	ADGRE1
<b>Synonyms</b>	EMR1; TM7LN3
<b>Host Species</b>	Rabbit
<b>Description</b>	Anti-ADGRE1 antibody(DMC481); IgG1 Chimeric mAb
<b>Delivery</b>	In Stock
<b>Uniprot ID</b>	Q14246
<b>IgG type</b>	Rabbit/Human Fc chimeric IgG1
<b>Clonality</b>	Monoclonal
<b>Reactivity</b>	Human
<b>Applications</b>	Flow Cyt
<b>Recommended Dilutions</b>	Flow Cyt 1:100
<b>Purification</b>	Purified from cell culture supernatant by affinity chromatography
<b>Formulation &amp; Reconstitution</b>	Lyophilized from sterile PBS, pH 7.4. Normally 5 % - 8% trehalose is added as protectants before lyophilization. Please see Certificate of Analysis for specific instructions of reconstitution.
<b>Storage &amp; Shipping</b>	Store at -20°C to -80°C for 12 months in lyophilized form. After reconstitution, if not intended for use within a month, aliquot and store at -80°C (Avoid repeated freezing and thawing). Lyophilized proteins are shipped at ambient temperature.
<b>Background</b>	This gene encodes a protein that has a domain resembling seven transmembrane G protein-coupled hormone receptors (7TM receptors) at its C-terminus. The N-terminus of the encoded protein has six EGF-like modules; separated from the transmembrane segments by a serine;threonine-rich domain; a feature reminiscent of mucin-like; single-span; integral membrane glycoproteins with adhesive properties. Multiple alternatively spliced transcript variants encoding different isoforms have been found for this gene. [provided by RefSeq; Jan 2012]
<b>Usage</b>	Research use only
<b>Conjugate</b>	Unconjugated



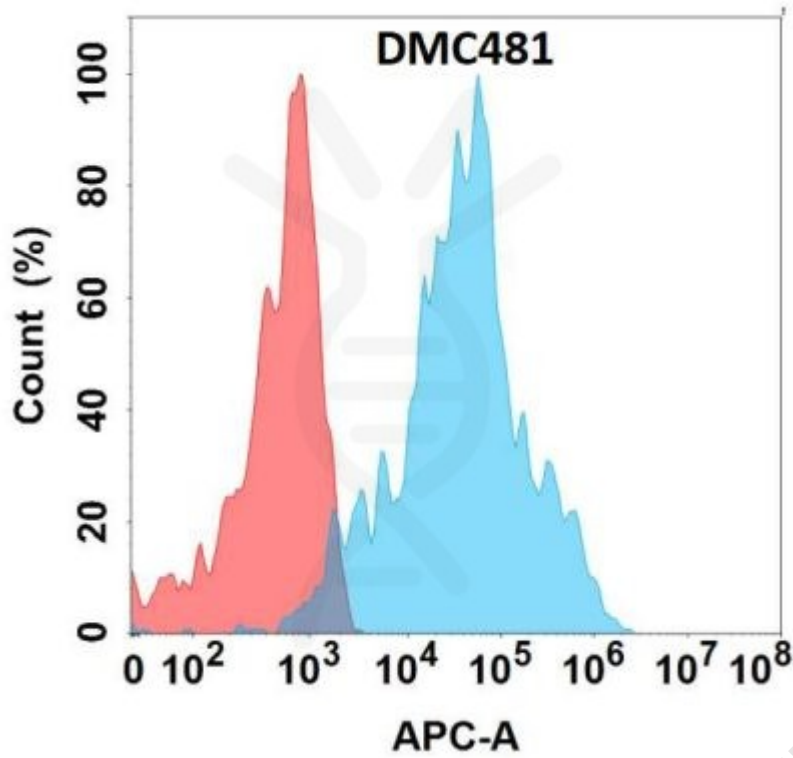


Figure 1. Flow cytometry analysis with Anti-ADGRE1 (DMC481) on Expi293 cells transfected with human ADGRE1 (Blue histogram) or Expi293 transfected with irrelevant protein (Red histogram).

DIMABIO CONFIDENTIAL

