

**PRODUCT INFORMATION**

<b>Clone ID</b>	DM47
<b>Target</b>	ACE2
<b>Synonyms</b>	ACE-2; ACEH; ACE2
<b>Host Species</b>	Rabbit
<b>Description</b>	Anti-ACE2 antibody(DM47); Rabbit mAb
<b>Delivery</b>	In Stock
<b>Uniprot ID</b>	Q9BYF1
<b>IgG type</b>	Rabbit IgG
<b>Clonality</b>	Monoclonal
<b>Reactivity</b>	Human
<b>Applications</b>	ELISA; Flow Cyt
<b>Recommended Dilutions</b>	ELISA 1:5000-10000; Flow Cyt 1:100
<b>Purification</b>	Purified from cell culture supernatant by affinity chromatography
<b>Formulation &amp; Reconstitution</b>	Lyophilized from sterile PBS, pH 7.4. Normally 5 % - 8% trehalose is added as protectants before lyophilization. Please see Certificate of Analysis for specific instructions of reconstitution.
<b>Storage &amp; Shipping</b>	Store at -20°C to -80°C for 12 months in lyophilized form. After reconstitution, if not intended for use within a month, aliquot and store at -80°C (Avoid repeated freezing and thawing). Lyophilized proteins are shipped at ambient temperature.
<b>Background</b>	The protein encoded by this gene belongs to the angiotensin-converting enzyme family of dipeptidyl carboxydipeptidases and has considerable homology to human angiotensin 1 converting enzyme. This secreted protein catalyzes the cleavage of angiotensin I into angiotensin 1-9; and angiotensin II into the vasodilator angiotensin 1-7. The organ- and cell-specific expression of this gene suggests that it may play a role in the regulation of cardiovascular and renal function; as well as fertility. In addition; the encoded protein is a functional receptor for the spike glycoprotein of the human coronaviruses SARS and HCoV-NL63.
<b>Usage</b>	Research use only
<b>Conjugate</b>	Unconjugated



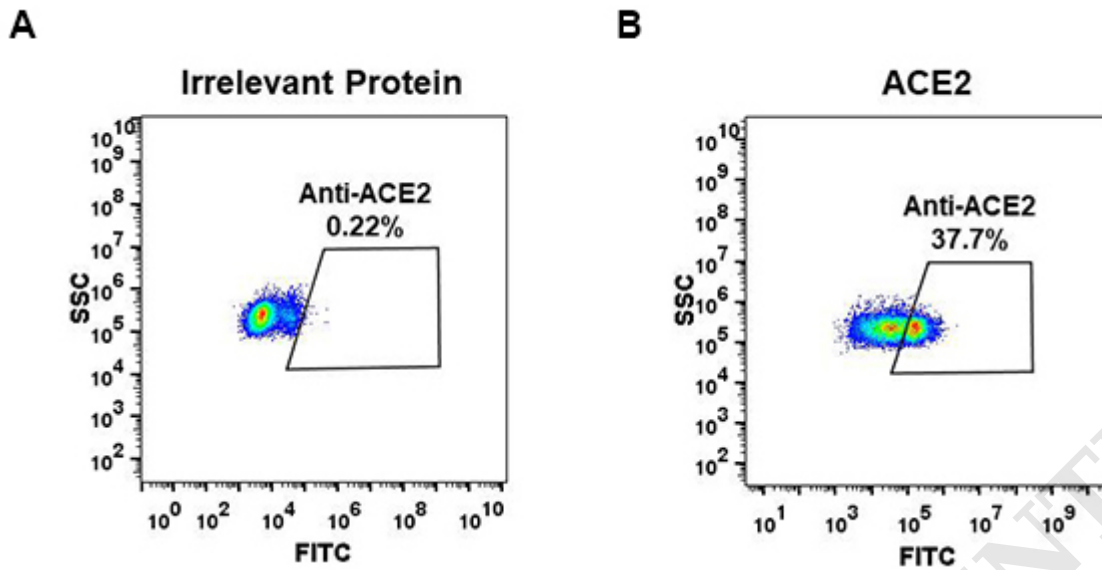


Figure 1. Expi 293 cell line transfected with irrelevant protein (left) and human ACE2 (right) were surface stained with Rabbit anti-ACE2 monoclonal antibody 1 $\mu$ g/ml (clone: DM47) followed by Alexa 488-conjugated anti-rabbit IgG secondary antibody.

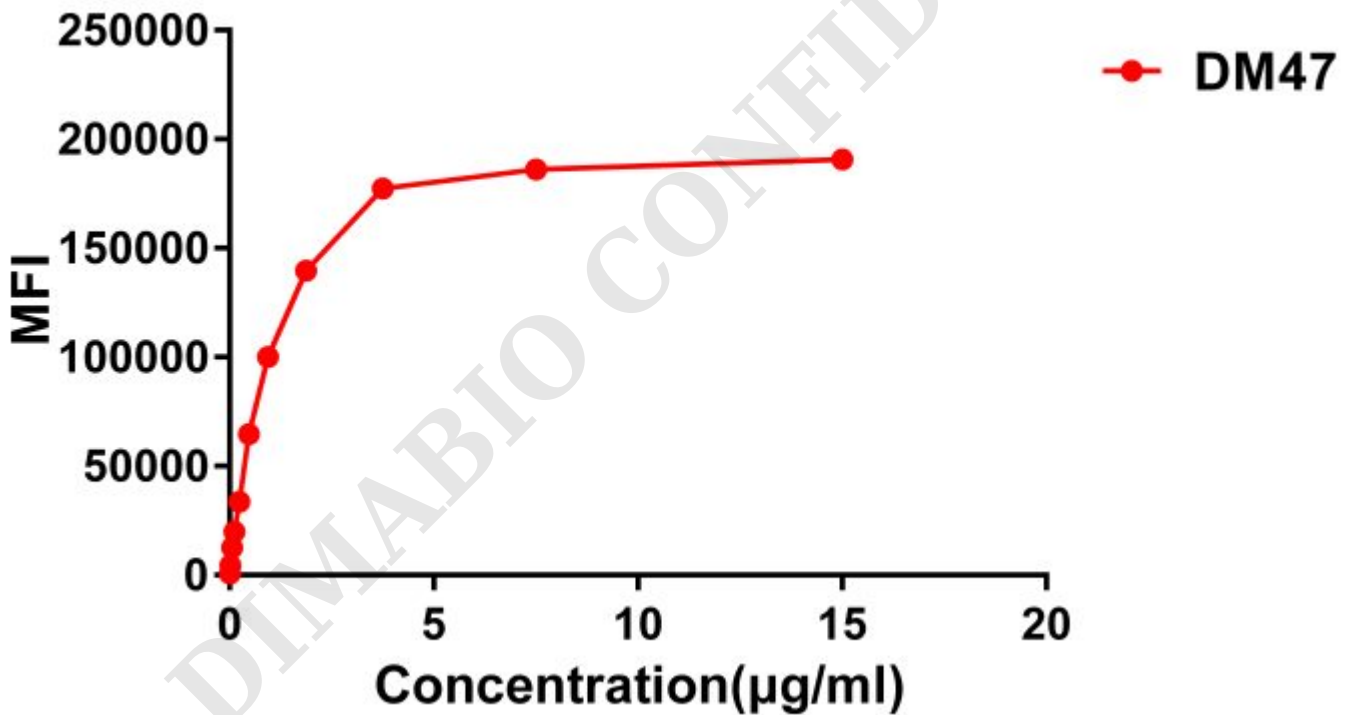


Figure 2. Flow cytometry data of serially titrated Rabbit anti-ACE2 monoclonal antibody ( clone: DM47) on Expi 293 cell line transfected with human ACE2. The Y-axis represents the mean fluorescence intensity (MFI) while the X-axis represents the concentration of IgG used.



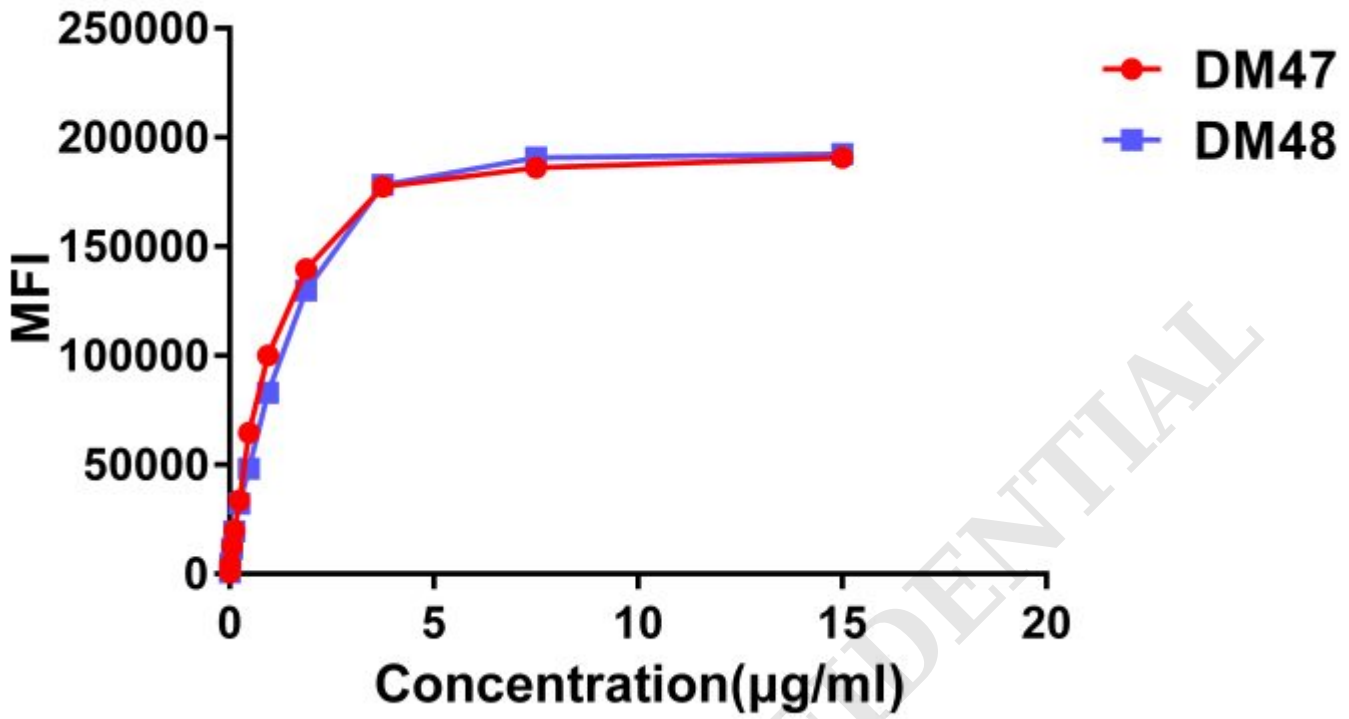


Figure 3. Affinity ranking of different Rabbit anti-ACE2 mAb clones by titration of different concentration onto Expi 293 cell line transfected with human ACE2. The Y-axis represents the mean fluorescence intensity (MFI) while the X-axis represents the concentration of IgG used.

