

PRODUCT INFORMATION

Clone ID	DM138
Target	5T4
Synonyms	5T4
Host Species	Rabbit
Description	Anti-5T4 antibody(DM138); Rabbit mAb
Delivery	In Stock
Uniprot ID	Q13641
IgG type	Rabbit IgG
Clonality	Monoclonal
Reactivity	Human
Applications	ELISA; Flow Cyt
Recommended Dilutions	ELISA 1:5000-10000; Flow Cyt 1:100
Purification	Purified from cell culture supernatant by affinity chromatography
Formulation & Reconstitution	Lyophilized from sterile PBS, pH 7.4. Normally 5 % - 8% trehalose is added as protectants before lyophilization. Please see Certificate of Analysis for specific instructions of reconstitution.
Storage & Shipping	Store at -20°C to -80°C for 12 months in lyophilized form. After reconstitution, if not intended for use within a month, aliquot and store at -80°C (Avoid repeated freezing and thawing). Lyophilized proteins are shipped at ambient temperature.
Background	This gene encodes a leucine-rich transmembrane glycoprotein that may be involved in cell adhesion. The encoded protein is an oncofetal antigen that is specific to trophoblast cells. In adults this protein is highly expressed in many tumor cells and is associated with poor clinical outcome in numerous cancers. Alternate splicing in the 5' UTR results in multiple transcript variants that encode the same protein.
Usage	Research use only



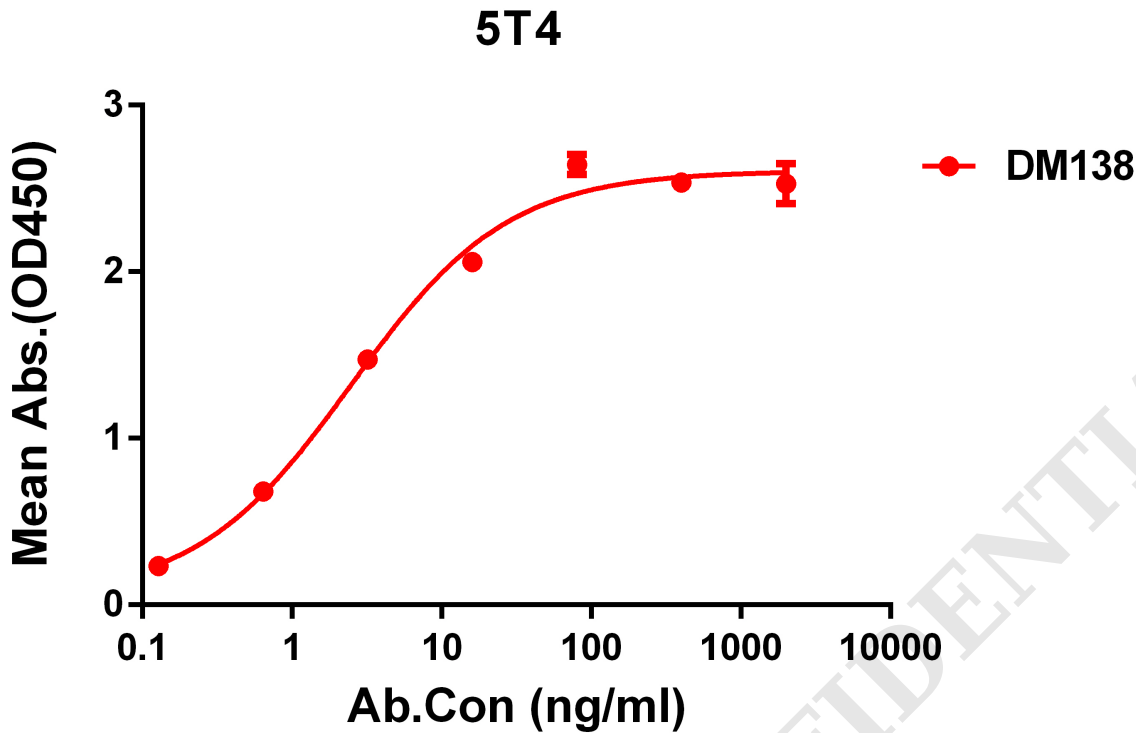


Figure 1. ELISA plate pre-coated by 1 $\mu\text{g/ml}$ (100 $\mu\text{l/well}$) Human 5T4 protein, His tagged protein PME100123 can bind Rabbit anti-5T4 monoclonal antibody (clone: DM138) in a linear range of 0.1-16 ng/ml.

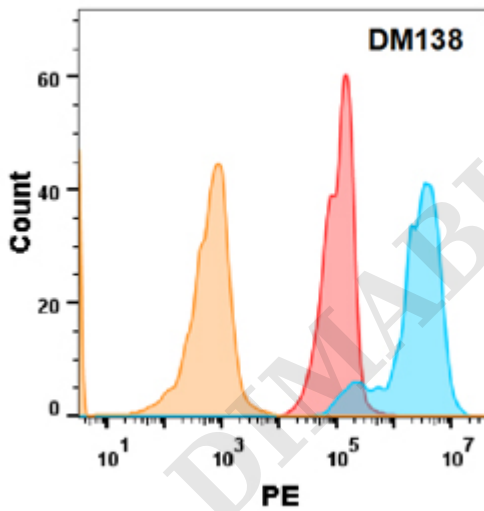


Figure 2. 5T4 protein is highly expressed on the surface of Expi293 cell membrane. Flow cytometry analysis with Anti-5T4 (DM138) on Expi293 cells transfected with human 5T4 (Blue histogram) or Expi293 transfected with irrelevant protein (Red histogram), and Isotype antibody on Expi293 transfected with irrelevant protein (Orange histogram)



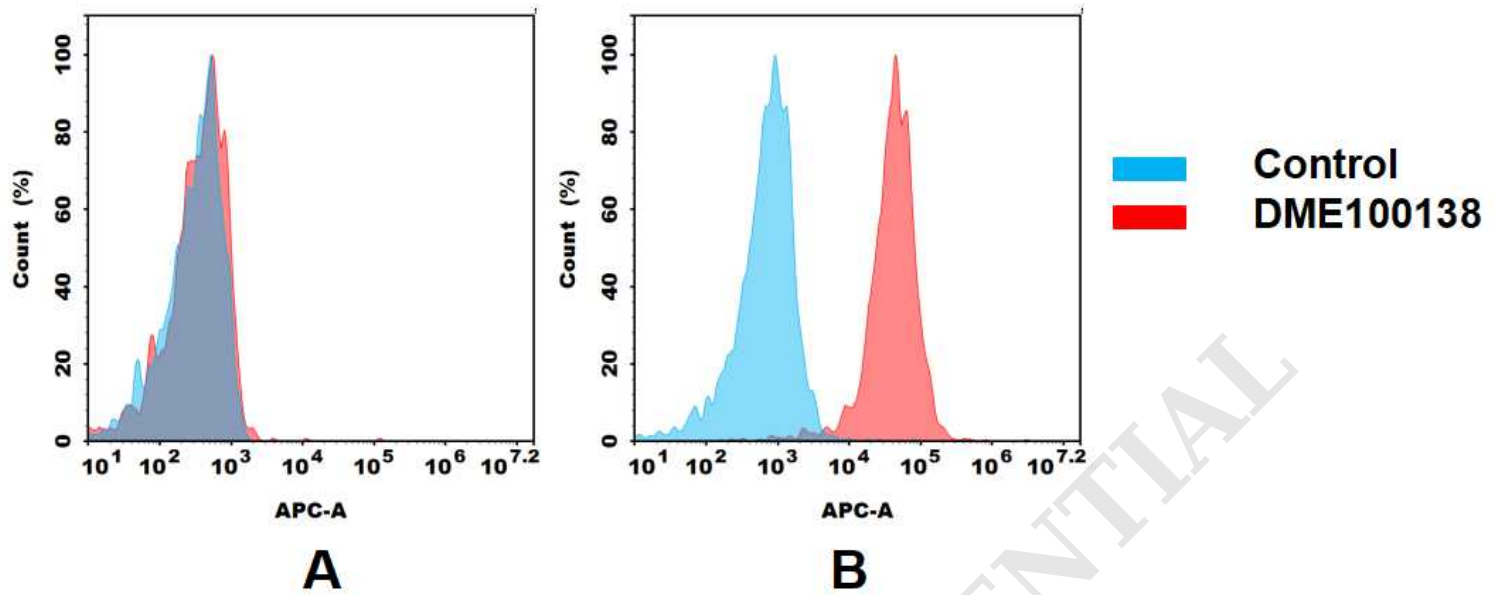


Figure 3. Flow cytometry analysis of antigen binding of anti-human 5T4 mAb(DME100138).

(A) DME100138 does weakly bind to Jurkat cells that do not express 5T4.

(B) A clear peak shift of DME100138 was seen compared to the control when incubated with 5T4-expressing MCF-7 cells, indicating strong binding of DME100138 to 5T4. Antibodies were incubated at 10 µg/mL.

DIMABIO CONFIDENTIAL

